

Aerial Source: USDA-FSA-APFO NAIP MrSID Mosaic, 2012

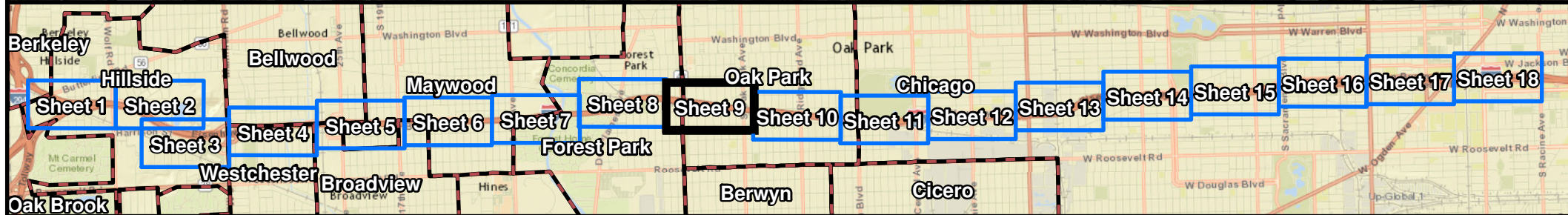
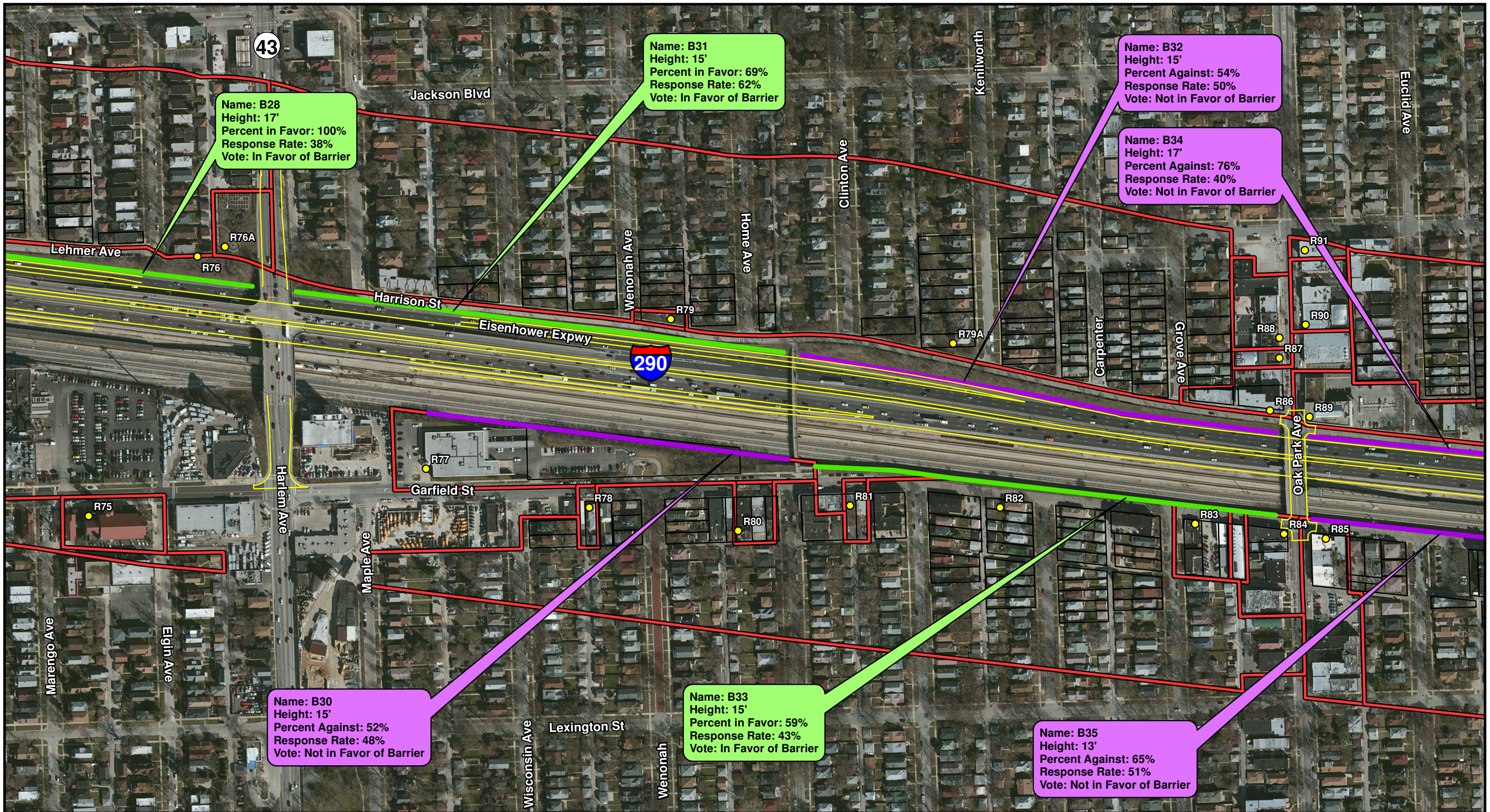
Legend

- Noise Receptor
- Common Noise Environment
- Municipal Boundary
- Noise Barrier Likely to be Implemented
- Noise Barrier Not Likely to be Implemented
- Proposed Edge of Pavement

* Callout Colored to Match Trending Results of Vote

Huff & Huff, Inc.

Figure 3 - Noise Barriers Recommended for Construction
 I-290 (IL56/Butterfield Rd to Racine Ave)
 Cook County, Illinois
 Sheet 8 of 18
 NRDG: Noise Reduction Design Plan



Aerial Source: USDA-FSA-APFO NAIP MrSID Mosaic, 2012

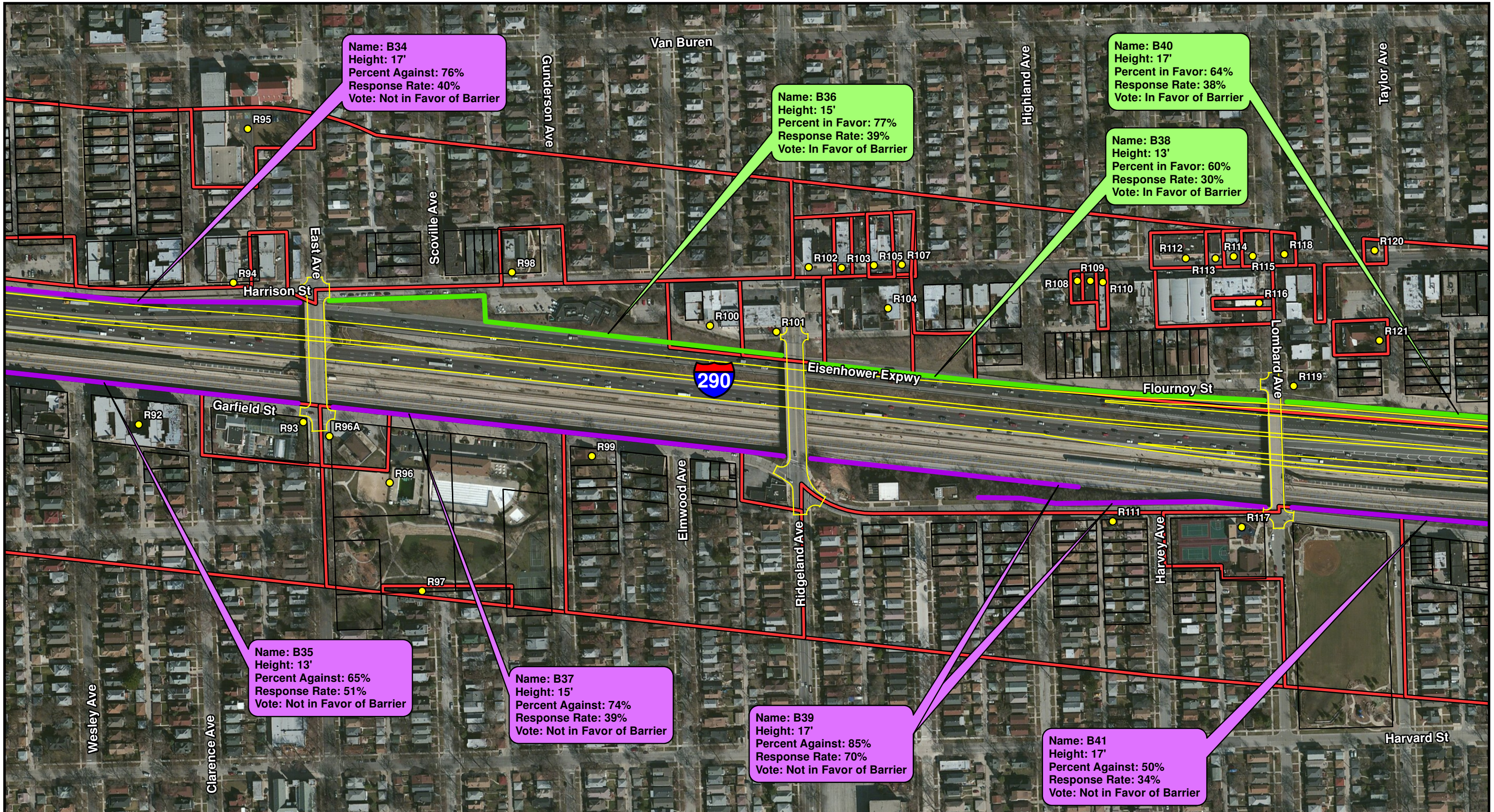
Legend

- Noise Receptor
- Common Noise Environment
- Municipal Boundary
- Noise Barrier Likely to be Implemented
- Noise Barrier Not Likely to be Implemented
- Proposed Edge of Pavement

* Callout Colored to Match Trending Results of Vote

Huff & Huff, Inc.

Figure 3 - Noise Barriers Recommended for Construction I-290 (IL56/Butterfield Rd to Racine Ave) Cook County, Illinois Sheet 9 of 18 NRDG: Noise Reduction Design Plan



Name: B34
 Height: 17'
 Percent Against: 76%
 Response Rate: 40%
 Vote: Not in Favor of Barrier

Name: B36
 Height: 15'
 Percent in Favor: 77%
 Response Rate: 39%
 Vote: In Favor of Barrier

Name: B40
 Height: 17'
 Percent in Favor: 64%
 Response Rate: 38%
 Vote: In Favor of Barrier

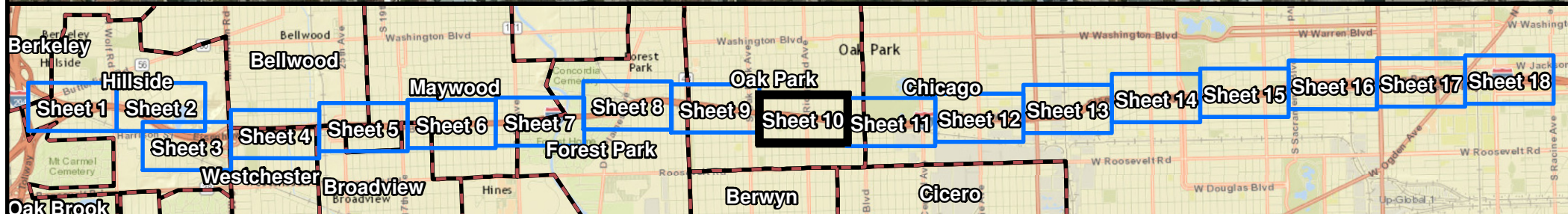
Name: B38
 Height: 13'
 Percent in Favor: 60%
 Response Rate: 30%
 Vote: In Favor of Barrier

Name: B35
 Height: 13'
 Percent Against: 65%
 Response Rate: 51%
 Vote: Not in Favor of Barrier

Name: B37
 Height: 15'
 Percent Against: 74%
 Response Rate: 39%
 Vote: Not in Favor of Barrier

Name: B39
 Height: 17'
 Percent Against: 85%
 Response Rate: 70%
 Vote: Not in Favor of Barrier

Name: B41
 Height: 17'
 Percent Against: 50%
 Response Rate: 34%
 Vote: Not in Favor of Barrier



Aerial Source: USDA-FSA-APFO NAIP MrSID Mosaic, 2012

Legend

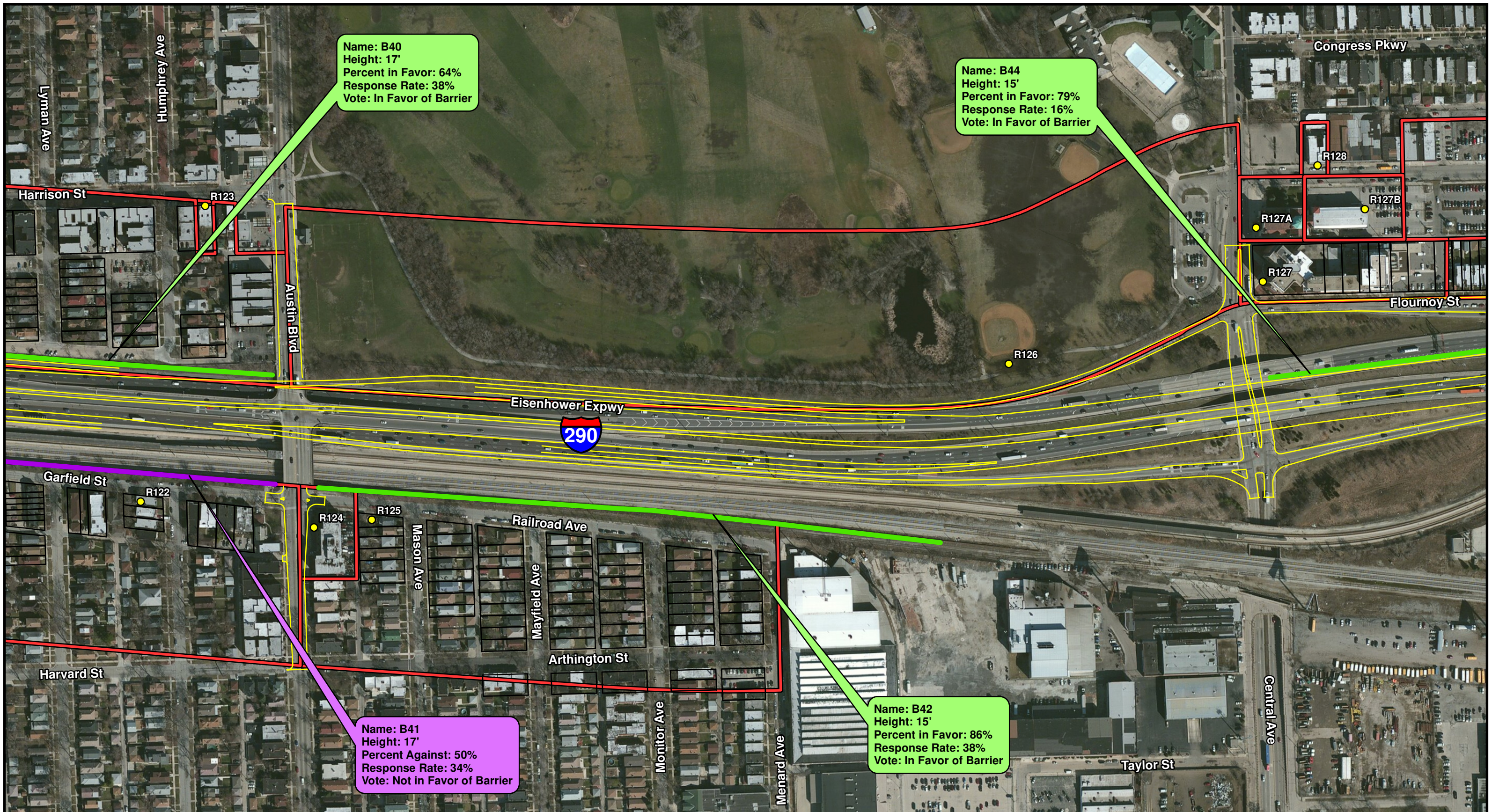
- Noise Receptor
- Common Noise Environment
- Municipal Boundary
- Noise Barrier Likely to be Implemented
- Noise Barrier Not Likely to be Implemented
- Proposed Edge of Pavement

0 250 500 Feet

* Callout Colored to Match Trending Results of Vote

Huff & Huff, Inc.

Figure 3 - Noise Barriers Recommended for Construction
 I-290 (IL56/Butterfield Rd to Racine Ave)
 Cook County, Illinois
 Sheet 10 of 18
 NRDG: Noise Reduction Design Plan

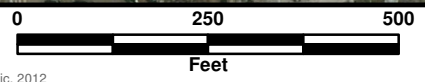


Name: B40
 Height: 17'
 Percent in Favor: 64%
 Response Rate: 38%
 Vote: In Favor of Barrier

Name: B44
 Height: 15'
 Percent in Favor: 79%
 Response Rate: 16%
 Vote: In Favor of Barrier

Name: B41
 Height: 17'
 Percent Against: 50%
 Response Rate: 34%
 Vote: Not in Favor of Barrier

Name: B42
 Height: 15'
 Percent in Favor: 86%
 Response Rate: 38%
 Vote: In Favor of Barrier



Aerial Source: USDA-FSA-APFO NAIP MrSID Mosaic, 2012

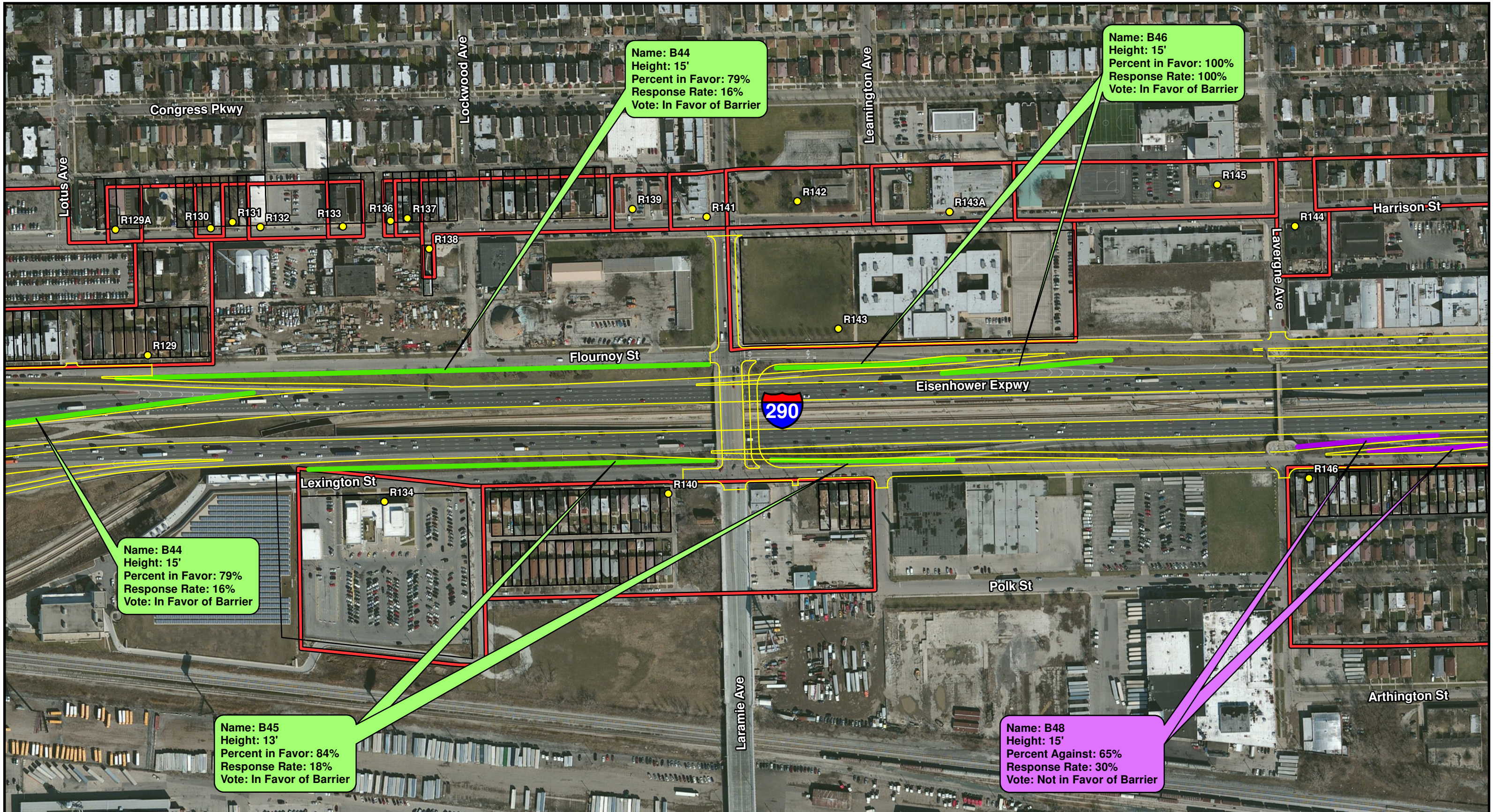
Legend

- Noise Receptor
- Common
- Noise Environment
- Municipal Boundary
- Noise Barrier Likely to be Implemented
- Noise Barrier Not Likely to be Implemented
- Proposed Edge of Pavement

* Callout Colored to Match Trending Results of Vote

Huff & Huff, Inc.

Figure 3 - Noise Barriers Recommended for Construction
 I-290 (IL56/Butterfield Rd to Racine Ave)
 Cook County, Illinois
 Sheet 11 of 18
 NRDG: Noise Reduction Design Plan



Name: B44
 Height: 15'
 Percent in Favor: 79%
 Response Rate: 16%
 Vote: In Favor of Barrier

Name: B46
 Height: 15'
 Percent in Favor: 100%
 Response Rate: 100%
 Vote: In Favor of Barrier

Name: B44
 Height: 15'
 Percent in Favor: 79%
 Response Rate: 16%
 Vote: In Favor of Barrier

Name: B45
 Height: 13'
 Percent in Favor: 84%
 Response Rate: 18%
 Vote: In Favor of Barrier

Name: B48
 Height: 15'
 Percent Against: 65%
 Response Rate: 30%
 Vote: Not in Favor of Barrier



Aerial Source: USDA-FSA-APFO NAIP MrSID Mosaic, 2012

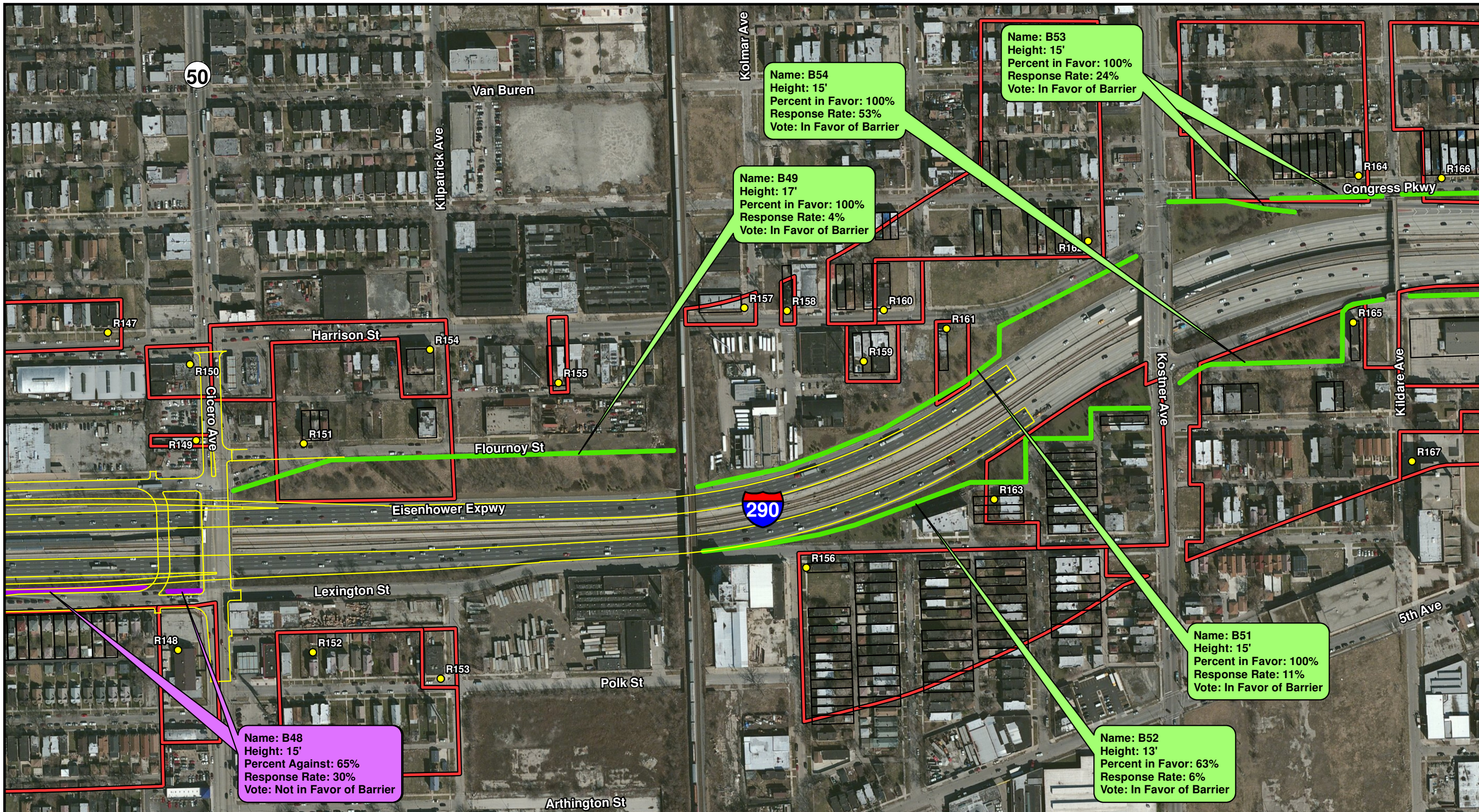
Legend

- Noise Receptor
- Common Noise Environment
- Municipal Boundary
- Noise Barrier Likely to be Implemented
- Noise Barrier Not Likely to be Implemented
- Proposed Edge of Pavement

* Callout Colored to Match Trending Results of Vote

Huff & Huff, Inc.

Figure 3 - Noise Barriers Recommended for Construction
 I-290 (IL56/Butterfield Rd to Racine Ave)
 Cook County, Illinois
 Sheet 12 of 18
 NRDG: Noise Reduction Design Plan



Name: B54
 Height: 15'
 Percent in Favor: 100%
 Response Rate: 53%
 Vote: In Favor of Barrier

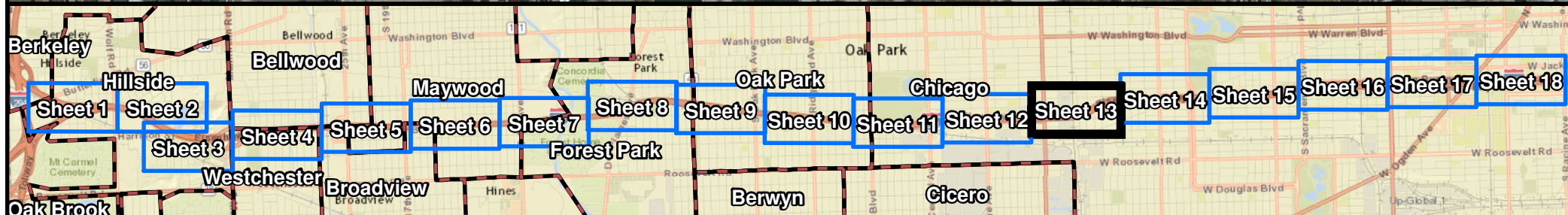
Name: B53
 Height: 15'
 Percent in Favor: 100%
 Response Rate: 24%
 Vote: In Favor of Barrier

Name: B49
 Height: 17'
 Percent in Favor: 100%
 Response Rate: 4%
 Vote: In Favor of Barrier

Name: B51
 Height: 15'
 Percent in Favor: 100%
 Response Rate: 11%
 Vote: In Favor of Barrier

Name: B52
 Height: 13'
 Percent in Favor: 63%
 Response Rate: 6%
 Vote: In Favor of Barrier

Name: B48
 Height: 15'
 Percent Against: 65%
 Response Rate: 30%
 Vote: Not in Favor of Barrier



Aerial Source: USDA-FSA-APFO NAIP MrSID Mosaic, 2012

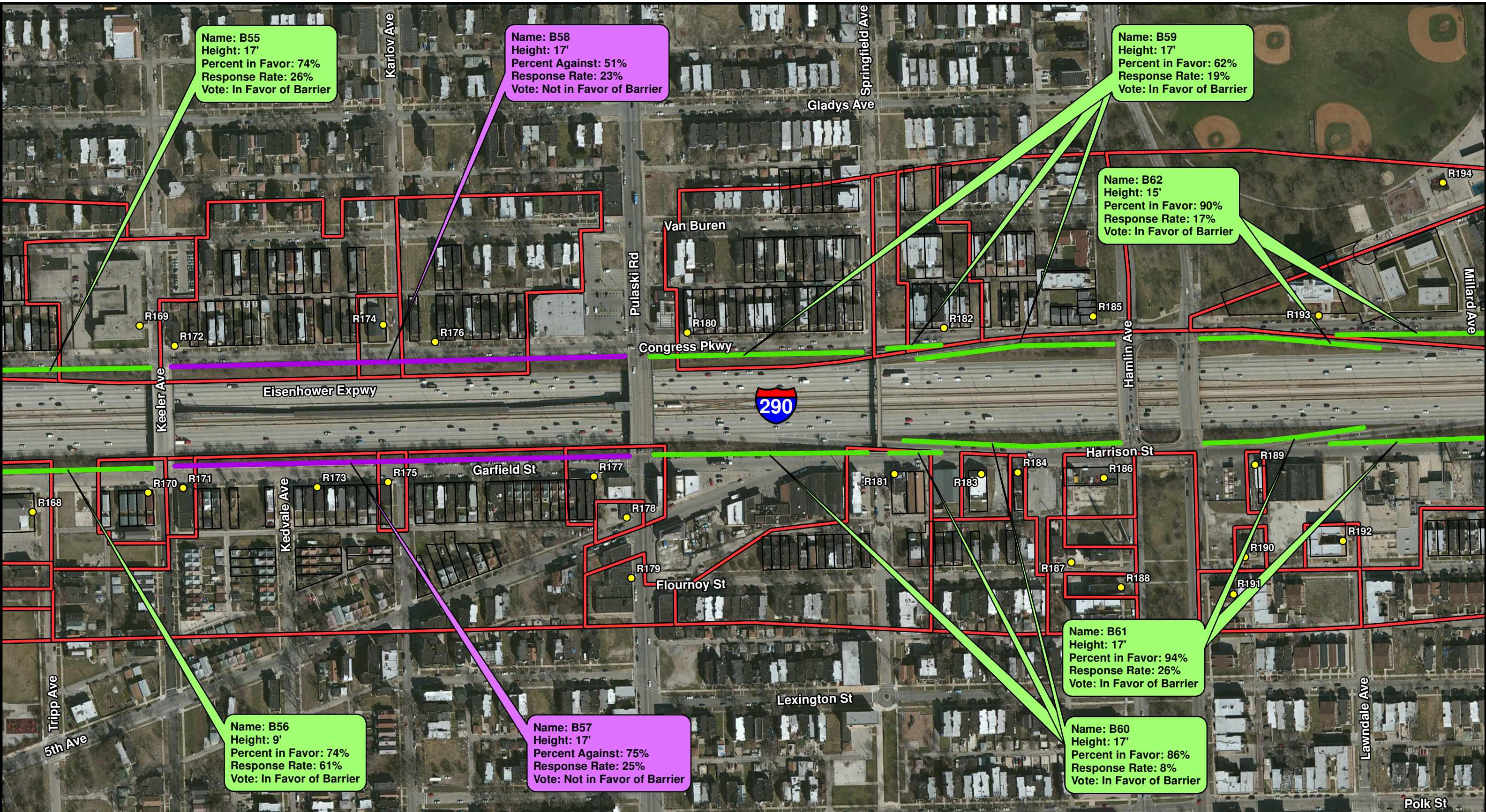
Legend

- Noise Receptor
- Common Noise Environment
- Municipal Boundary
- Noise Barrier Likely to be Implemented
- Noise Barrier Not Likely to be Implemented
- Proposed Edge of Pavement

* Callout Colored to Match Trending Results of Vote

Huff & Huff, Inc.

Figure 3 - Noise Barriers Recommended for Construction
 I-290 (IL56/Butterfield Rd to Racine Ave)
 Cook County, Illinois
 Sheet 13 of 18
 NRDG: Noise Reduction Design Plan



Name: B55
Height: 17'
Percent in Favor: 74%
Response Rate: 26%
Vote: In Favor of Barrier

Name: B58
Height: 17'
Percent Against: 51%
Response Rate: 23%
Vote: Not in Favor of Barrier

Name: B59
Height: 17'
Percent in Favor: 62%
Response Rate: 19%
Vote: In Favor of Barrier

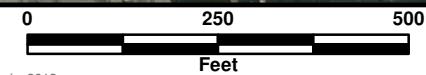
Name: B62
Height: 15'
Percent in Favor: 90%
Response Rate: 17%
Vote: In Favor of Barrier

Name: B56
Height: 9'
Percent in Favor: 74%
Response Rate: 61%
Vote: In Favor of Barrier

Name: B57
Height: 17'
Percent Against: 75%
Response Rate: 25%
Vote: Not in Favor of Barrier

Name: B61
Height: 17'
Percent in Favor: 94%
Response Rate: 26%
Vote: In Favor of Barrier

Name: B60
Height: 17'
Percent in Favor: 86%
Response Rate: 8%
Vote: In Favor of Barrier



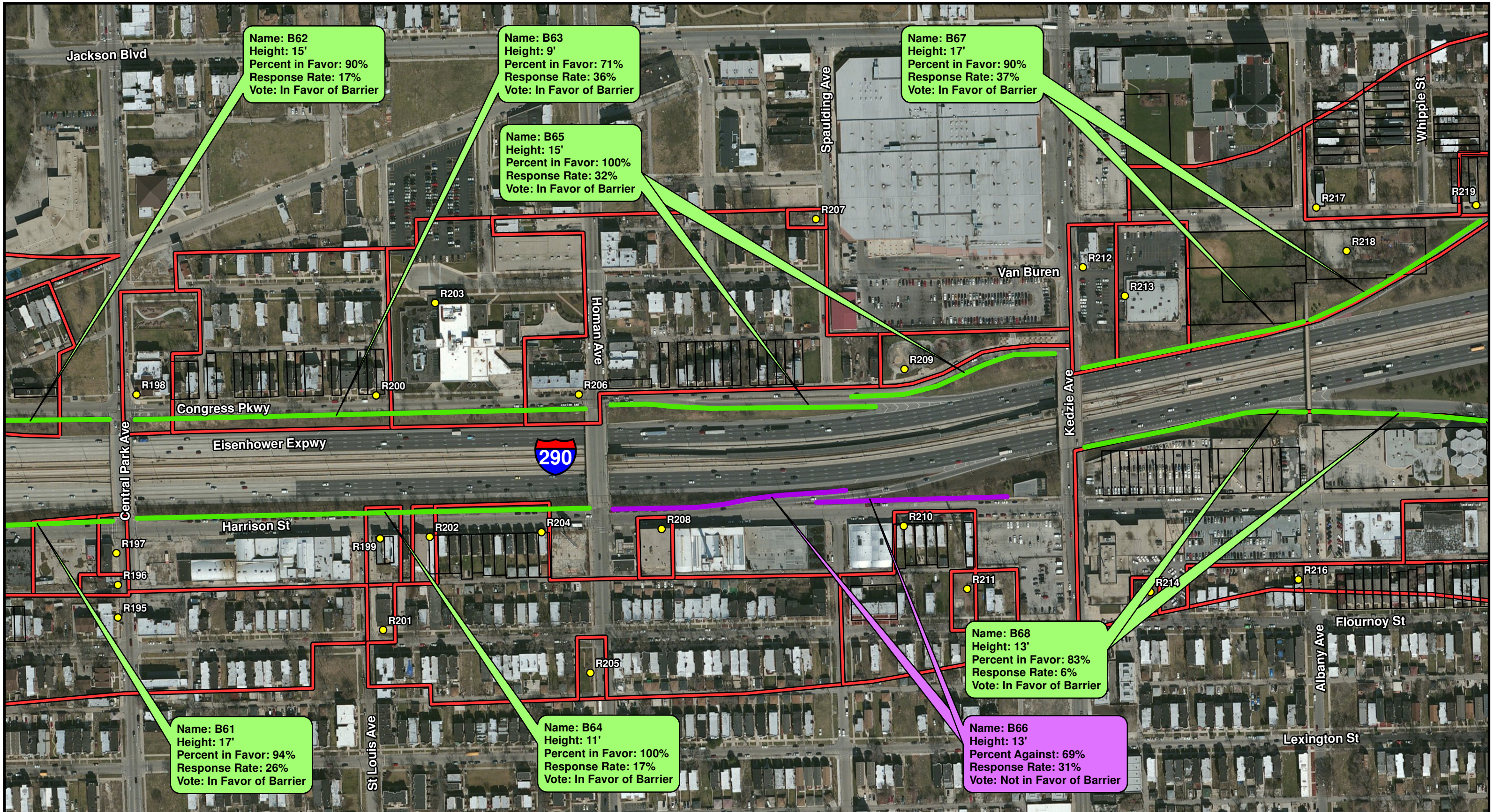
Aerial Source: USDA-FSA-APFO NAIP MrSID Mosaic, 2012

- Legend**
- Noise Receptor
 - Common
 - Noise Environment
 - Municipal Boundary
 - Noise Barrier Likely to be Implemented
 - Noise Barrier Not Likely to be Implemented
 - Proposed Edge of Pavement

* Callout Colored to Match Trending Results of Vote

Huff & Huff, Inc.

Figure 3 - Noise Barriers Recommended for Construction
I-290 (IL56/Butterfield Rd to Racine Ave)
Cook County, Illinois
Sheet 14 of 18
NRDG: Noise Reduction Design Plan



Name: B62
 Height: 15'
 Percent in Favor: 90%
 Response Rate: 17%
 Vote: In Favor of Barrier

Name: B63
 Height: 9'
 Percent in Favor: 71%
 Response Rate: 36%
 Vote: In Favor of Barrier

Name: B67
 Height: 17'
 Percent in Favor: 90%
 Response Rate: 37%
 Vote: In Favor of Barrier

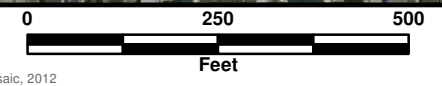
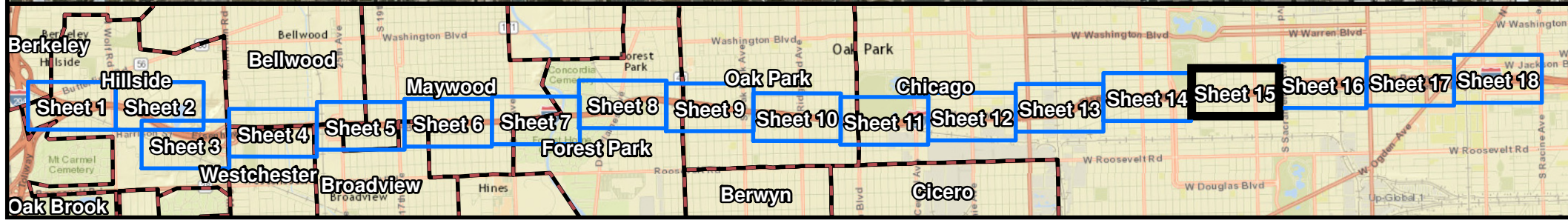
Name: B65
 Height: 15'
 Percent in Favor: 100%
 Response Rate: 32%
 Vote: In Favor of Barrier

Name: B61
 Height: 17'
 Percent in Favor: 94%
 Response Rate: 26%
 Vote: In Favor of Barrier

Name: B64
 Height: 11'
 Percent in Favor: 100%
 Response Rate: 17%
 Vote: In Favor of Barrier

Name: B68
 Height: 13'
 Percent in Favor: 83%
 Response Rate: 6%
 Vote: In Favor of Barrier

Name: B66
 Height: 13'
 Percent Against: 69%
 Response Rate: 31%
 Vote: Not in Favor of Barrier



Aerial Source: USDA-FSA-APFO NAIP MrSID Mosaic, 2012

Legend

- Noise Receptor
- Common
- Noise Environment
- Municipal Boundary
- Noise Barrier Likely to be Implemented
- Noise Barrier Not Likely to be Implemented
- Proposed Edge of Pavement

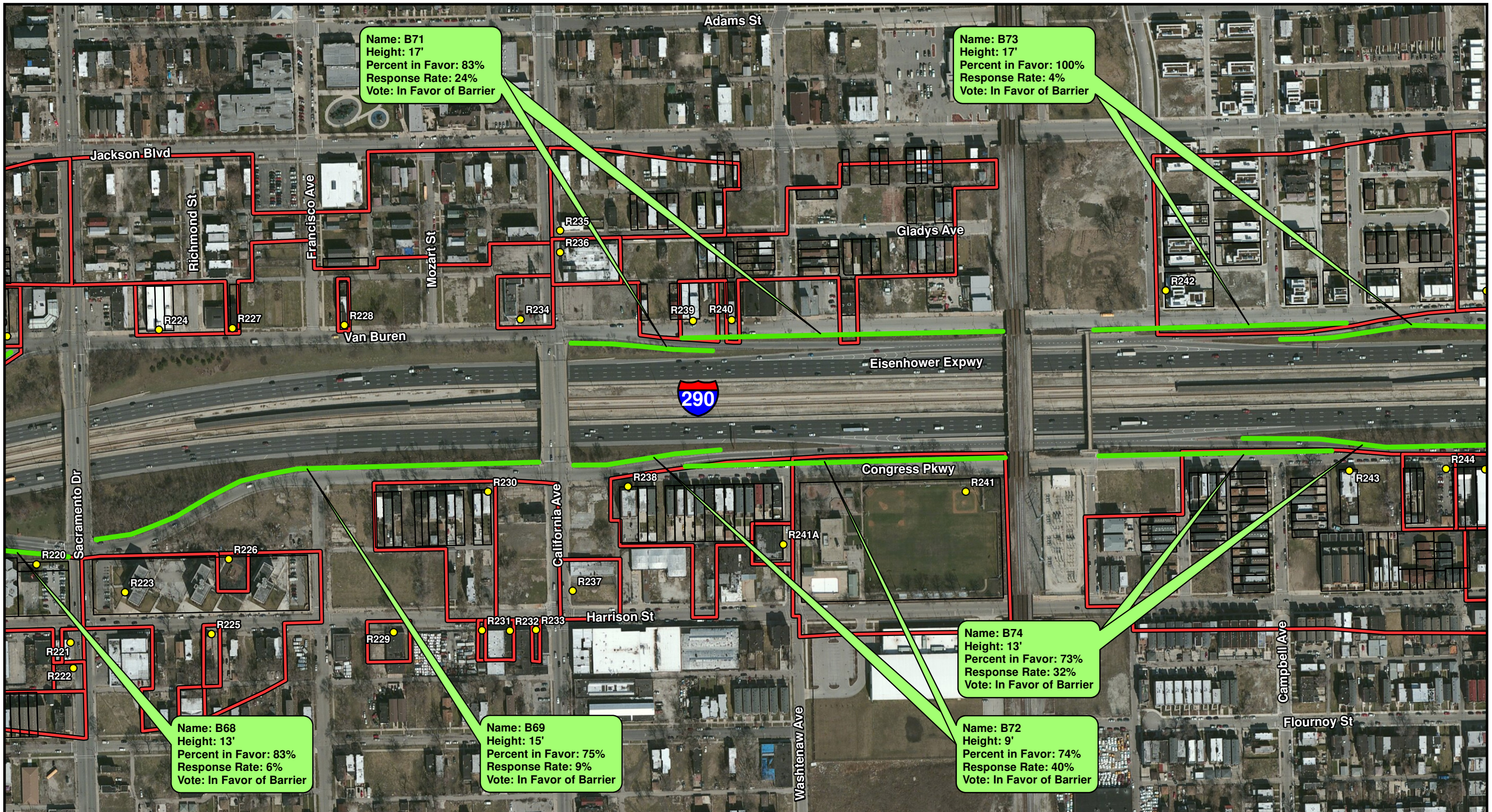
* Callout Colored to Match Trending Results of Vote

Huff & Huff, Inc.

Figure 3 - Noise Barriers Recommended for Construction I-290 (IL56/Butterfield Rd to Racine Ave) Cook County, Illinois

Sheet 15 of 18

NRDG: Noise Reduction Design Plan



Name: B71
 Height: 17'
 Percent in Favor: 83%
 Response Rate: 24%
 Vote: In Favor of Barrier

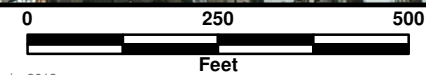
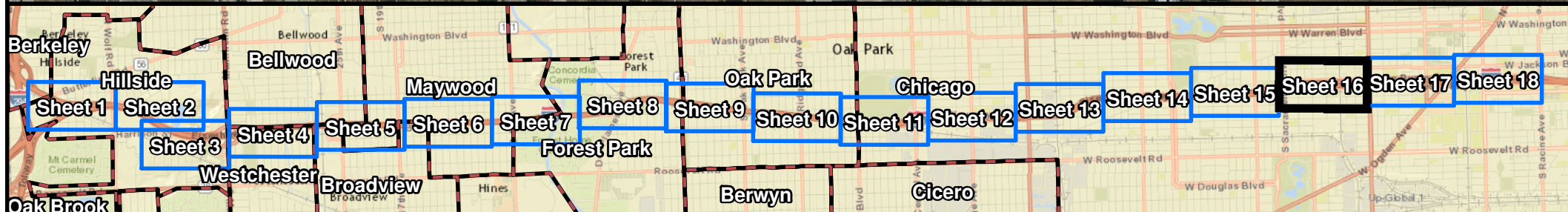
Name: B73
 Height: 17'
 Percent in Favor: 100%
 Response Rate: 4%
 Vote: In Favor of Barrier

Name: B68
 Height: 13'
 Percent in Favor: 83%
 Response Rate: 6%
 Vote: In Favor of Barrier

Name: B69
 Height: 15'
 Percent in Favor: 75%
 Response Rate: 9%
 Vote: In Favor of Barrier

Name: B74
 Height: 13'
 Percent in Favor: 73%
 Response Rate: 32%
 Vote: In Favor of Barrier

Name: B72
 Height: 9'
 Percent in Favor: 74%
 Response Rate: 40%
 Vote: In Favor of Barrier



Aerial Source: USDA-FSA-APFO NAIP MrSID Mosaic, 2012

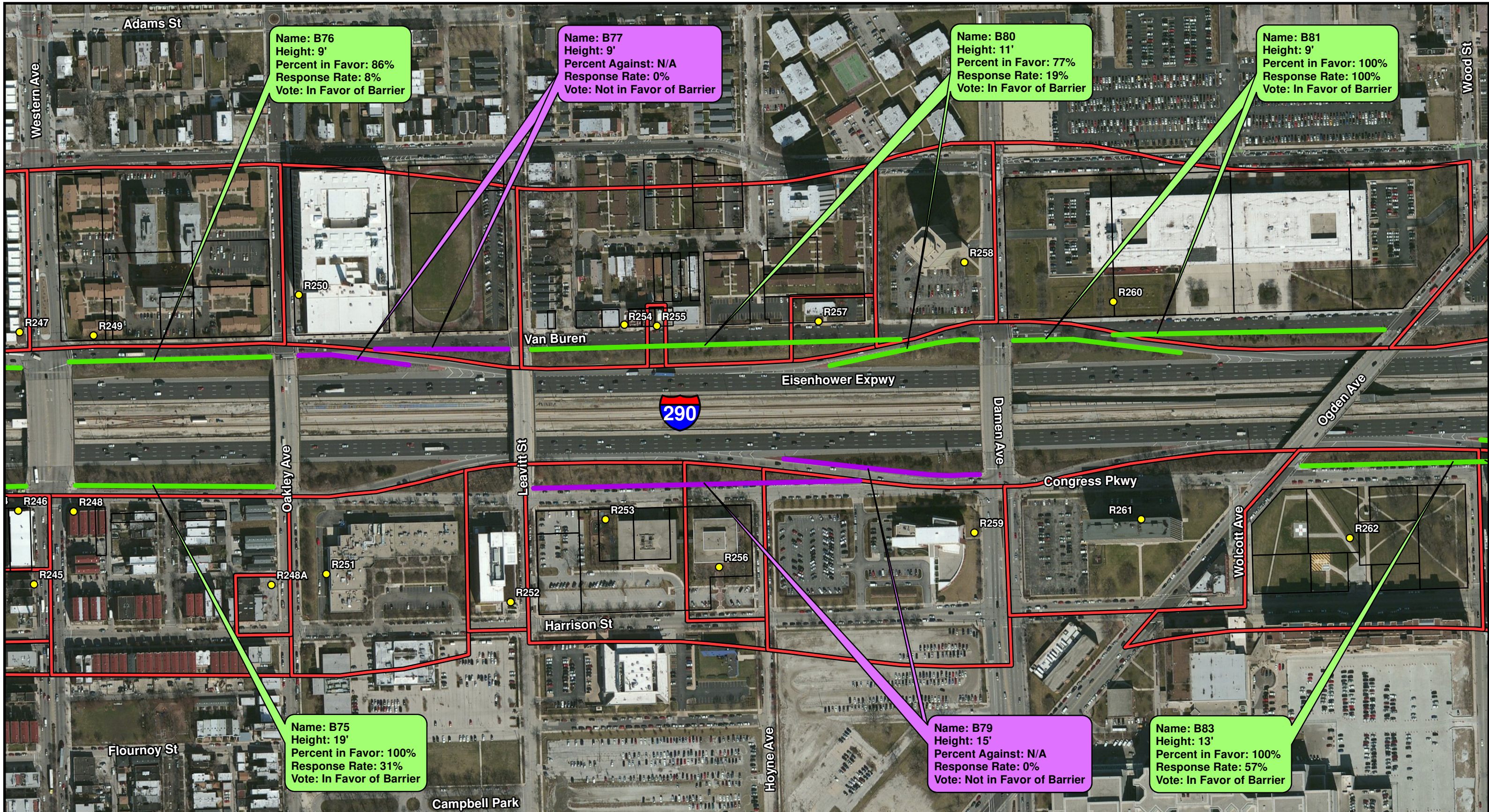
Legend

- Noise Receptor
- Common Noise Environment
- Municipal Boundary
- Noise Barrier Likely to be Implemented
- Noise Barrier Not Likely to be Implemented
- Proposed Edge of Pavement

* Callout Colored to Match Trending Results of Vote

Huff & Huff, Inc.

Figure 3 - Noise Barriers Recommended for Construction
 I-290 (IL56/Butterfield Rd to Racine Ave)
 Cook County, Illinois
 Sheet 16 of 18
 NRDG: Noise Reduction Design Plan



Name: B76
 Height: 9'
 Percent in Favor: 86%
 Response Rate: 8%
 Vote: In Favor of Barrier

Name: B77
 Height: 9'
 Percent Against: N/A
 Response Rate: 0%
 Vote: Not in Favor of Barrier

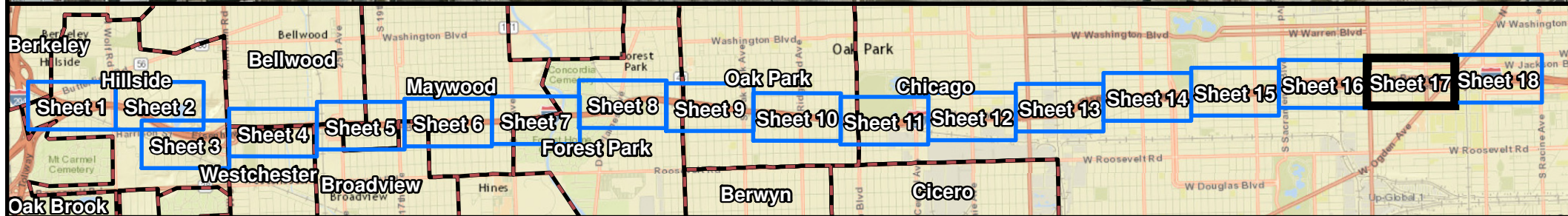
Name: B80
 Height: 11'
 Percent in Favor: 77%
 Response Rate: 19%
 Vote: In Favor of Barrier

Name: B81
 Height: 9'
 Percent in Favor: 100%
 Response Rate: 100%
 Vote: In Favor of Barrier

Name: B75
 Height: 19'
 Percent in Favor: 100%
 Response Rate: 31%
 Vote: In Favor of Barrier

Name: B79
 Height: 15'
 Percent Against: N/A
 Response Rate: 0%
 Vote: Not in Favor of Barrier

Name: B83
 Height: 13'
 Percent in Favor: 100%
 Response Rate: 57%
 Vote: In Favor of Barrier



0 250 500
 Feet

Aerial Source: USDA-FSA-APFO NAIP MrSID Mosaic, 2012

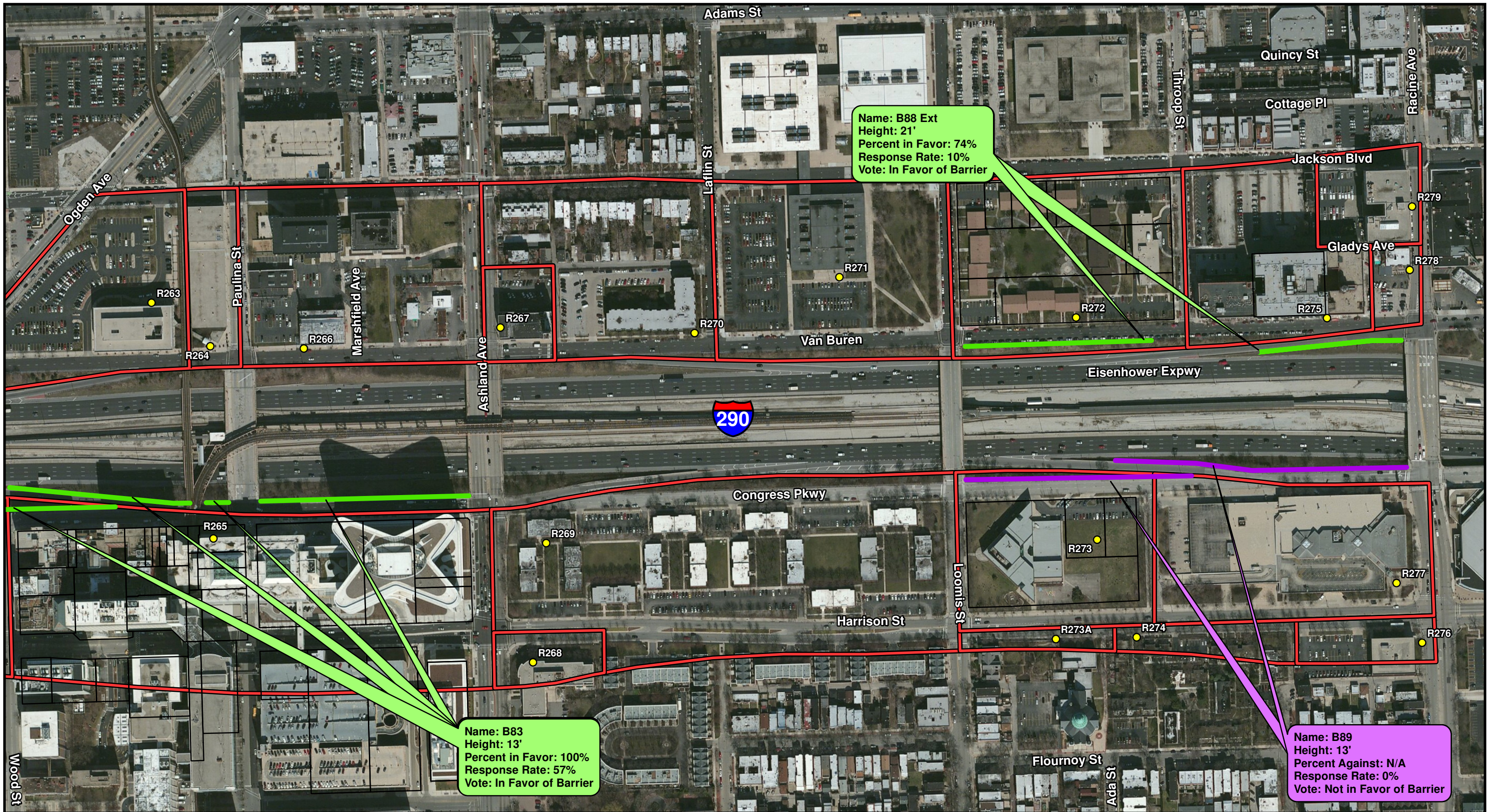
Legend

- Noise Receptor
- Common Noise Environment
- Municipal Boundary
- Noise Barrier Likely to be Implemented
- Noise Barrier Not Likely to be Implemented
- Proposed Edge of Pavement

* Callout Colored to Match Trending Results of Vote

Huff & Huff, Inc.

Figure 3 - Noise Barriers Recommended for Construction
 I-290 (IL56/Butterfield Rd to Racine Ave)
 Cook County, Illinois
 Sheet 17 of 18
 NRDG: Noise Reduction Design Plan



Aerial Source: USDA-FSA-APFO NAIP MrSID Mosaic, 2012

Legend

- Noise Receptor
- Common Noise Environment
- Municipal Boundary
- Noise Barrier Likely to be Implemented
- Noise Barrier Not Likely to be Implemented
- Proposed Edge of Pavement

* Callout Colored to Match Trending Results of Vote

Huff & Huff, Inc.
 Figure 3 - Noise Barriers Recommended for Construction
 I-290 (IL56/Butterfield Rd to Racine Ave)
 Cook County, Illinois
 Sheet 18 of 18
 NRDG: Noise Reduction Design Plan

Appendix B

[DATE]

Tonita LeShore
Director
Community Development and Human Resources
Village of Bellwood
3200 Washington Boulevard
Bellwood, IL 60104

Re: Traffic Noise Information for Undeveloped Lands
Eisenhower Expressway (I-290) Reconstruction

The Illinois Department of Transportation is currently conducting environmental (Phase I) preliminary engineering studies for proposed improvements to the Eisenhower Expressway (I-290) in Cook County, IL. The proposed improvements include reconstruction of the expressway from I-88 to Cicero Avenue/IL Route 50, as well as roadway restriping from Cicero Avenue/IL Route 50 to Racine Avenue.

As part of the Phase I Environmental Study for this proposed project, projected future traffic noise levels were evaluated for lands (either currently under your jurisdiction or land that may come under your jurisdiction) near the proposed roadway improvement. For your information, this study area includes land that may be planned for future development in a comprehensive land use plan.

This letter includes an exhibit showing the predicted design year (2040) build traffic noise levels for the undeveloped lands along the project corridor within your jurisdiction. This information is for your use in planning and permitting future development. We recommend that you carefully consider the future predicted noise levels to avoid potential issues of public concern over incompatible noise levels.

The figure shows currently vacant/future development areas in red, and also shows the distance from the center of the nearest outside I-290 mainline travel lane (based on the proposed improvement) to both the 66- and 71-dB(A) noise level contours.

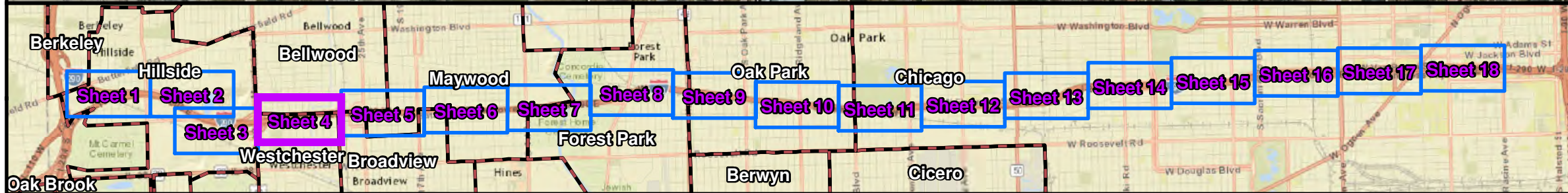
- A 66-dB(A) noise contour represents noise levels that would be a noise impact for residential areas, schools, places of worship, medical offices, recreational areas, and institutional uses.
- A 71-dB(A) noise contour represents noise levels that would be a noise impact for hotels, restaurants, and offices.

To help with your future planning and discernment regarding permitting decisions, we encourage you to obtain the Federal Highway Administration (FHWA) publication titled *Entering the Quiet Zone: Noise Compatible Land Use Planning*. This publication can be obtained from the FHWA website:

www.fhwa.dot.gov/environment/noise/noise_compatible_planning/federal_approach/land_use/quietzone.pdf

For additional information regarding traffic noise, regulations and policy, noise analyses or noise abatement, we encourage you to visit the Department's web site at: <http://www.dot.il.gov/>. Click on the "Environment" link and then the "Traffic Noise" link to access this information.

Sincerely,



0 250 500
Feet

Aerial Source: USDA-FSA-APFO NAIP MrSID Mosaic, 2012

Legend	
Primary Land Use Activity Category	Secondary Land Use Activity Category
B	C
C	E
E	F
F	G
G	Municipal Boundary

Huff & Huff, Inc.

Undeveloped Lands Analysis
I-290 (IL56/Butterfield Rd to Racine Ave)
Cook County, Illinois
Sheet 4 of 18

[DATE]

Andrew Mooney
Commissioner
Planning and Development
City of Chicago
121 N. LaSalle Street
Chicago, IL 60602

Re: Traffic Noise Information for Undeveloped Lands
Eisenhower Expressway (I-290) Reconstruction

The Illinois Department of Transportation is currently conducting environmental (Phase I) preliminary engineering studies for proposed improvements to the Eisenhower Expressway (I-290) in Cook County, IL. The proposed improvements include reconstruction of the expressway from I-88 to Cicero Avenue/IL Route 50, as well as roadway restriping from Cicero Avenue/IL Route 50 to Racine Avenue.

As part of the Phase I Environmental Study for this proposed project, projected future traffic noise levels were evaluated for lands (either currently under your jurisdiction or land that may come under your jurisdiction) near the proposed roadway improvement. For your information, this study area includes land that may be planned for future development in a comprehensive land use plan.

This letter includes an exhibit showing the predicted design year (2040) build traffic noise levels for the undeveloped lands along the project corridor within your jurisdiction. This information is for your use in planning and permitting future development. We recommend that you carefully consider the future predicted noise levels to avoid potential issues of public concern over incompatible noise levels.

The figure shows currently vacant/future development areas in red, and also shows the distance from the center of the nearest outside I-290 mainline travel lane (based on the proposed improvement) to both the 66- and 71-dB(A) noise level contours.

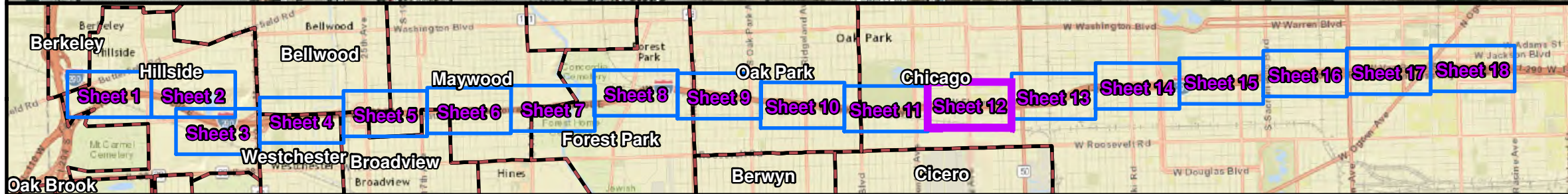
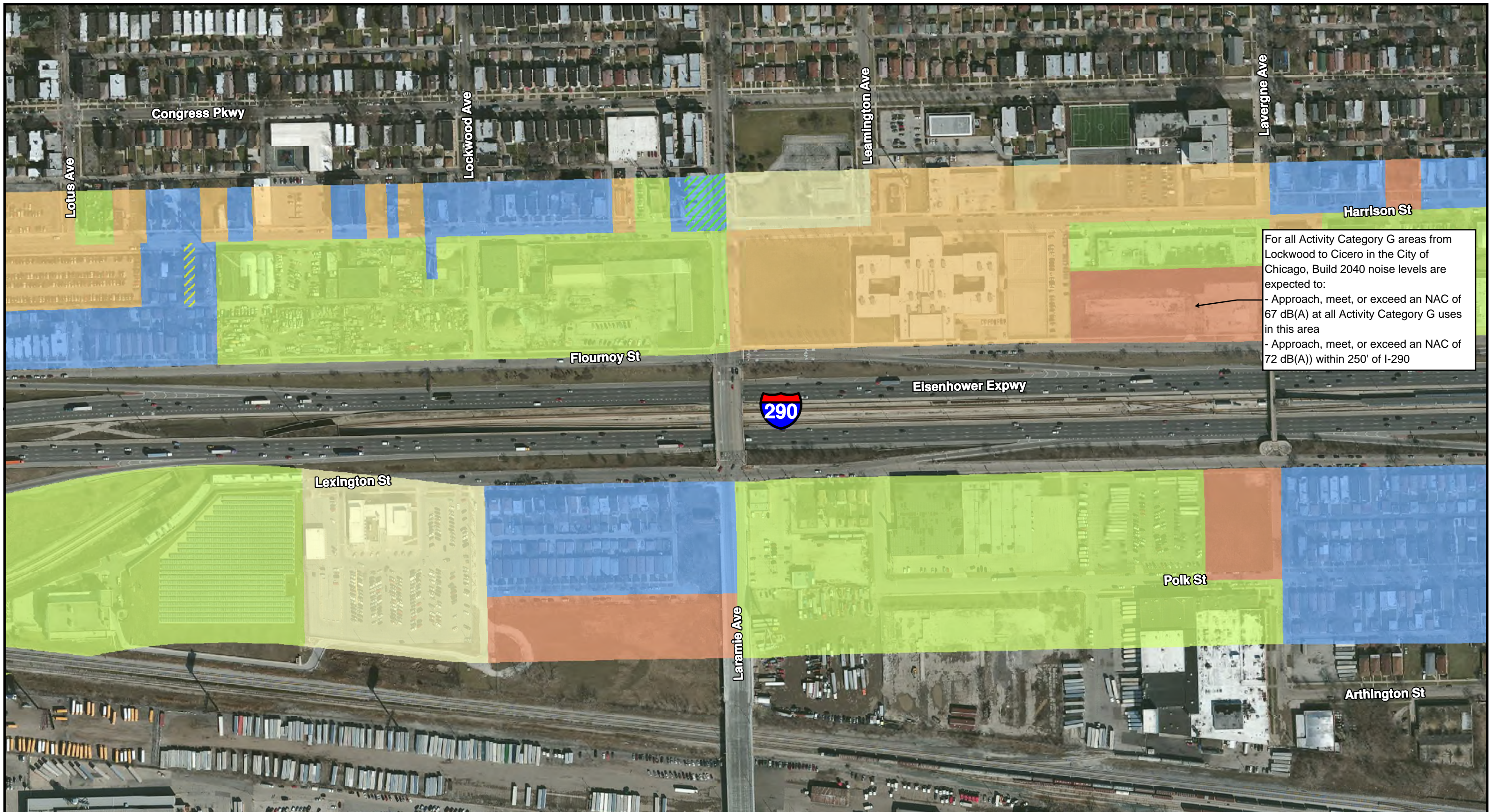
- A 66-dB(A) noise contour represents noise levels that would be a noise impact for residential areas, schools, places of worship, medical offices, recreational areas, and institutional uses.
- A 71-dB(A) noise contour represents noise levels that would be a noise impact for hotels, restaurants, and offices.

To help with your future planning and discernment regarding permitting decisions, we encourage you to obtain the Federal Highway Administration (FHWA) publication titled *Entering the Quiet Zone: Noise Compatible Land Use Planning*. This publication can be obtained from the FHWA website:

www.fhwa.dot.gov/environment/noise/noise_compatible_planning/federal_approach/land_use/quiet_zone.pdf

For additional information regarding traffic noise, regulations and policy, noise analyses or noise abatement, we encourage you to visit the Department's web site at: <http://www.dot.il.gov/>. Click on the "Environment" link and then the "Traffic Noise" link to access this information.

Sincerely,



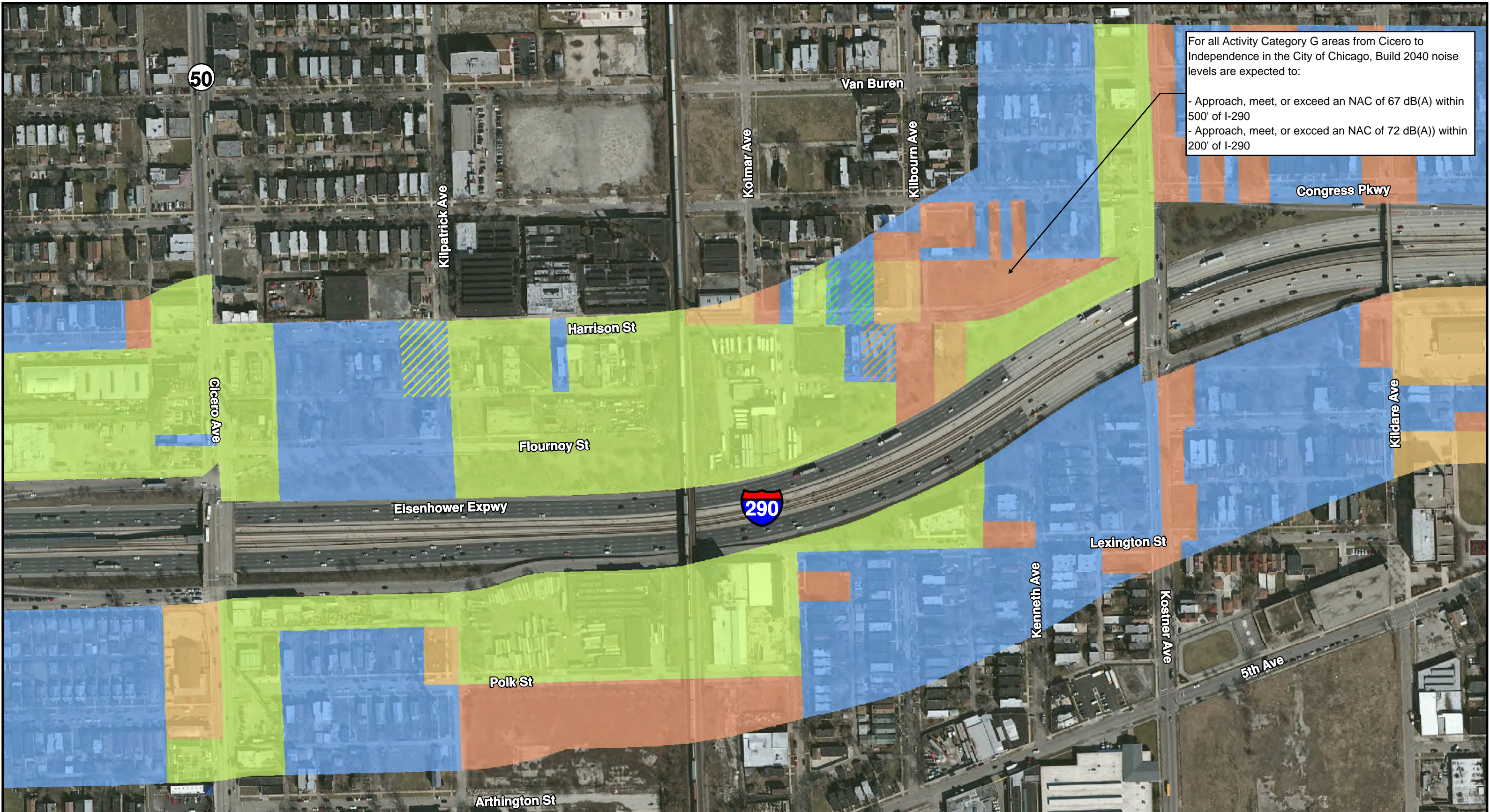
0 250 500
Feet

Aerial Source: USDA-FSA-APFO NAIP MrSID Mosaic, 2012

Legend	
Primary Land Use	Secondary Land Use
Activity Category	Activity Category
B	C
C	E
E	F
F	G
G	Municipal Boundary

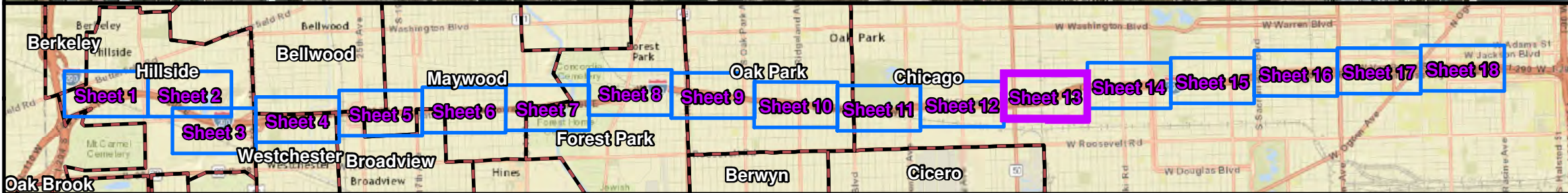
Huff & Huff, Inc.

Undeveloped Lands Analysis
I-290 (IL56/Butterfield Rd to Racine Ave)
Cook County, Illinois
Sheet 12 of 18



For all Activity Category G areas from Cicero to Independence in the City of Chicago, Build 2040 noise levels are expected to:

- Approach, meet, or exceed an NAC of 67 dB(A) within 500' of I-290
- Approach, meet, or exceed an NAC of 72 dB(A) within 200' of I-290



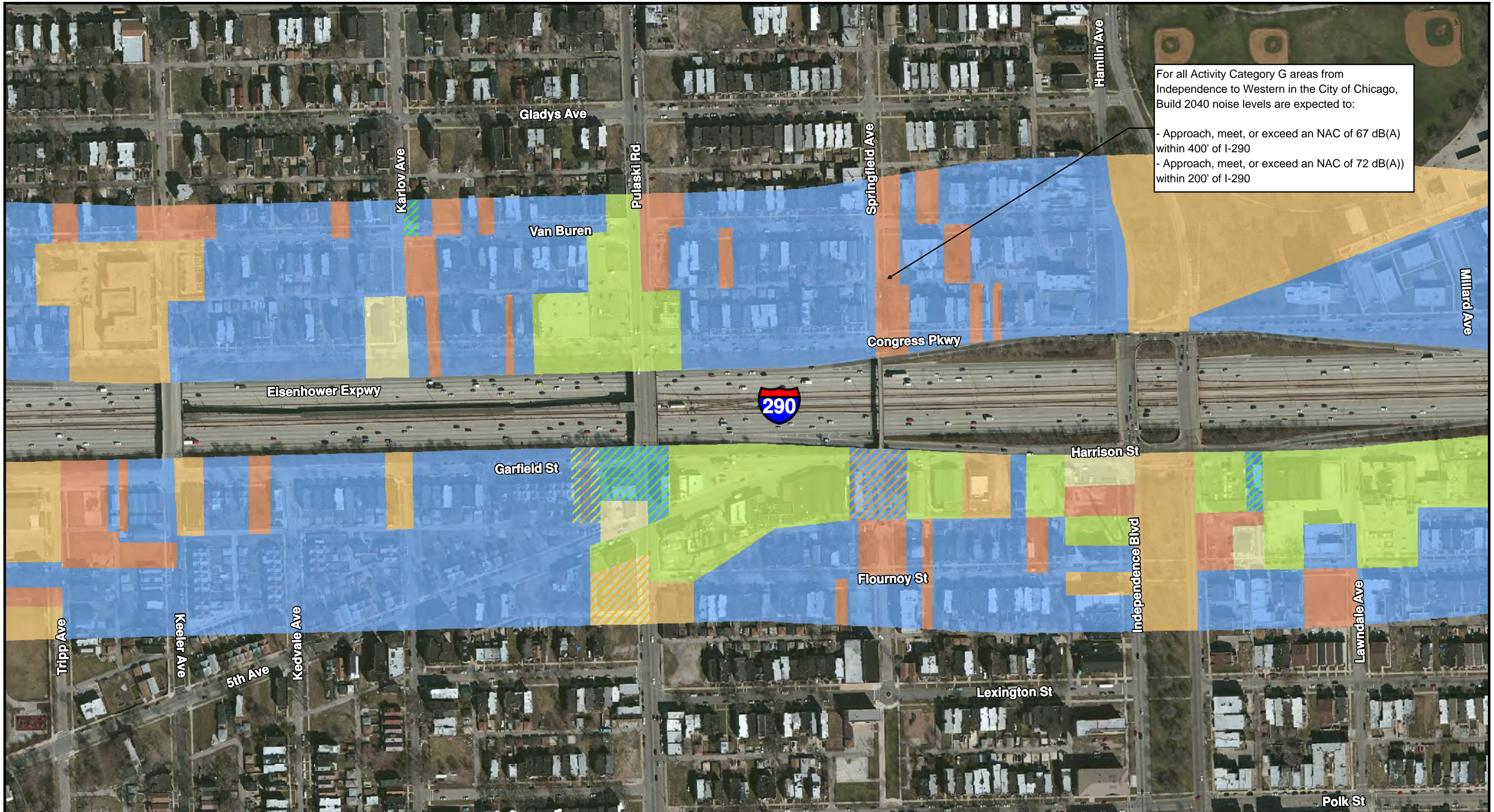
0 250 500
Feet

Aerial Source: USDA-FSA-APFO NAIP MrSID Mosaic, 2012

Legend	
Primary Land Use	Secondary Land Use
B	C
C	E
E	F
F	G
G	Municipal Boundary

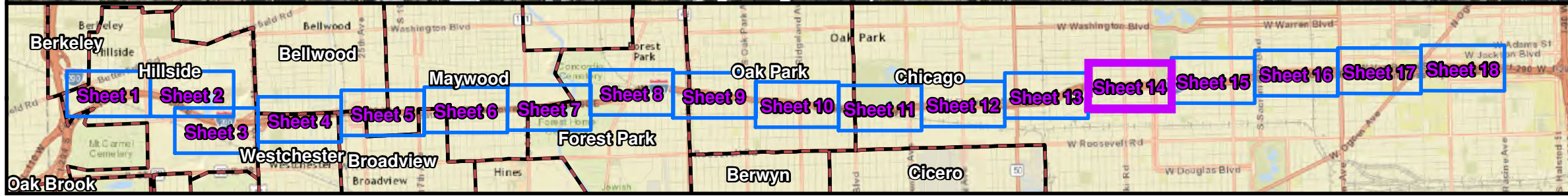
Huff & Huff, Inc.

Undeveloped Lands Analysis
I-290 (IL56/Butterfield Rd to Racine Ave)
Cook County, Illinois
Sheet 13 of 18



For all Activity Category G areas from Independence to Western in the City of Chicago, Build 2040 noise levels are expected to:

- Approach, meet, or exceed an NAC of 67 dB(A) within 400' of I-290
- Approach, meet, or exceed an NAC of 72 dB(A) within 200' of I-290



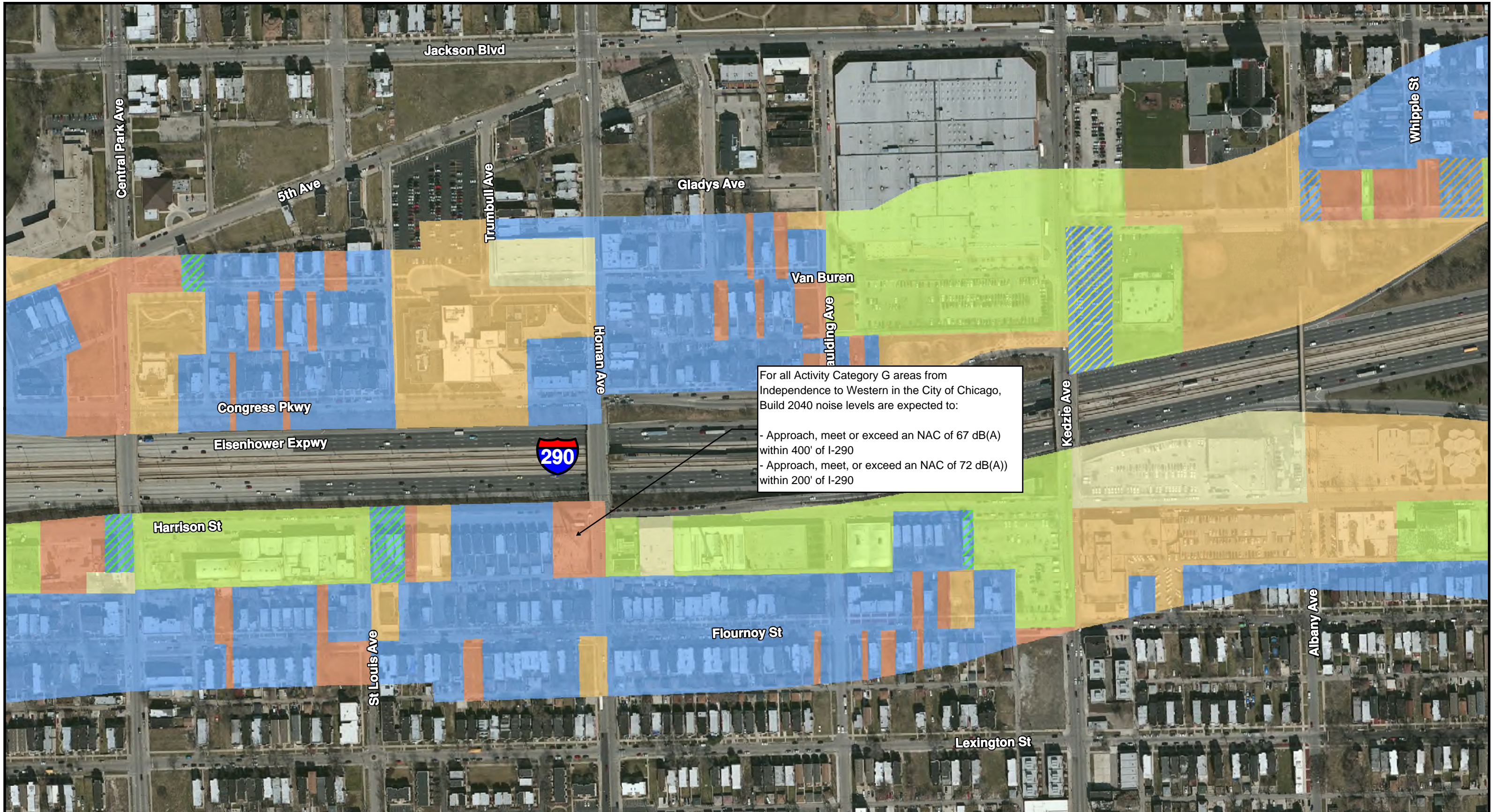
0 250 500 Feet

Aerial Source: USDA-FSA-APFO NAIP MrSID Mosaic, 2012

Legend	
Primary Land Use	Secondary Land Use
B	C
C	E
E	F
F	G
G	Municipal Boundary

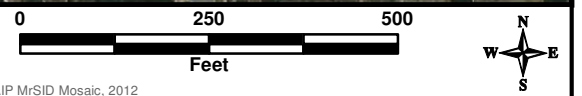
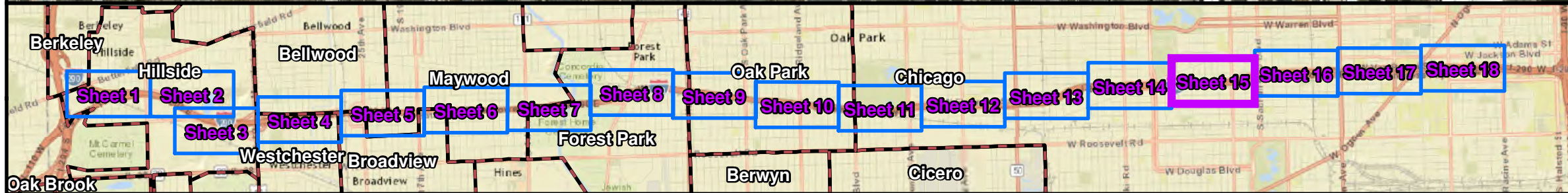
Huff & Huff, Inc.

Undeveloped Lands Analysis
I-290 (IL56/Butterfield Rd to Racine Ave)
Cook County, Illinois
Sheet 14 of 18



For all Activity Category G areas from Independence to Western in the City of Chicago, Build 2040 noise levels are expected to:

- Approach, meet or exceed an NAC of 67 dB(A) within 400' of I-290
- Approach, meet, or exceed an NAC of 72 dB(A) within 200' of I-290

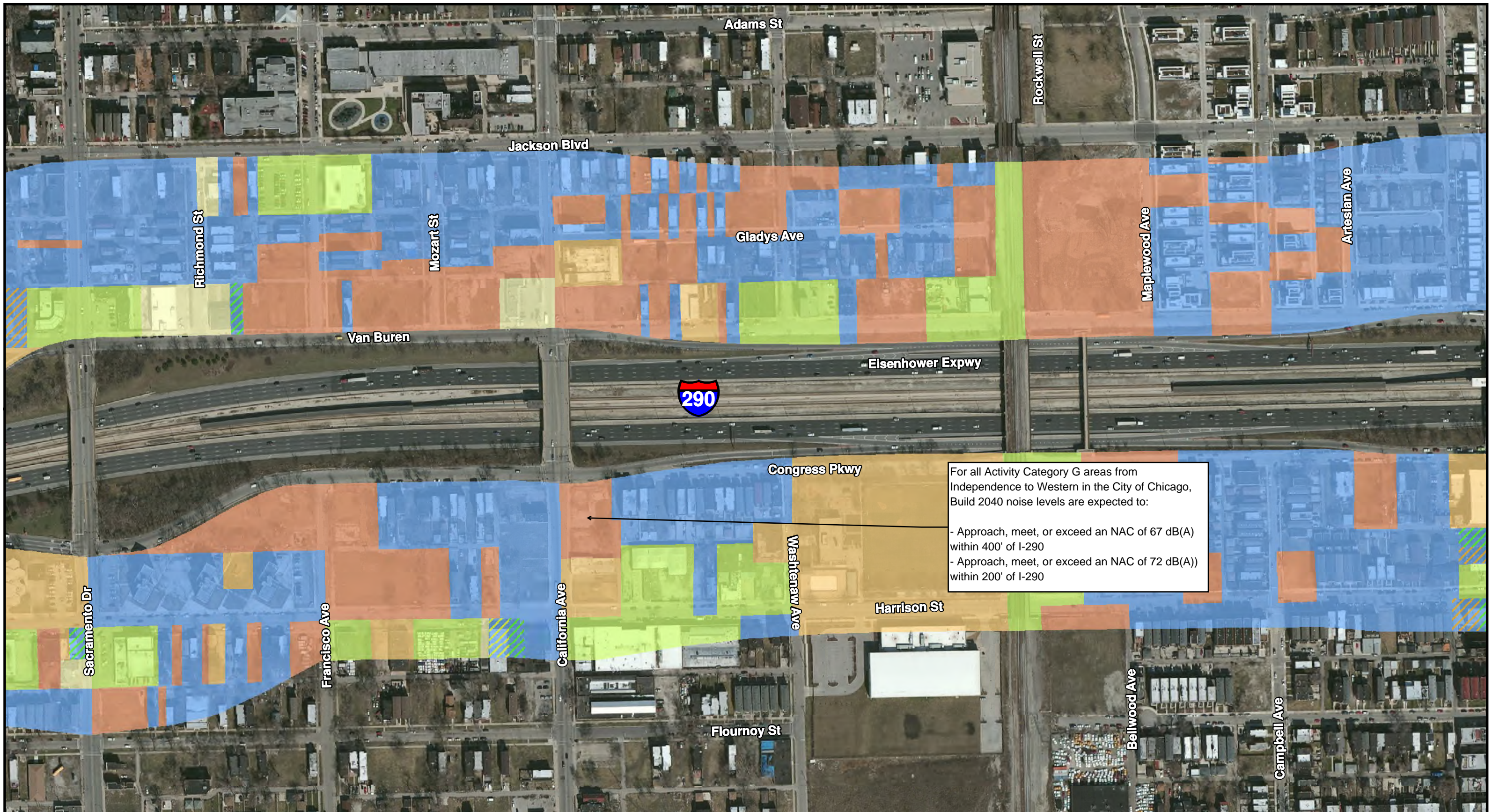


Aerial Source: USDA-FSA-APFO NAIP MRSID Mosaic, 2012

Legend	
Primary Land Use	Secondary Land Use
Activity Category	Activity Category
B	C
C	E
E	F
F	G
G	Municipal Boundary

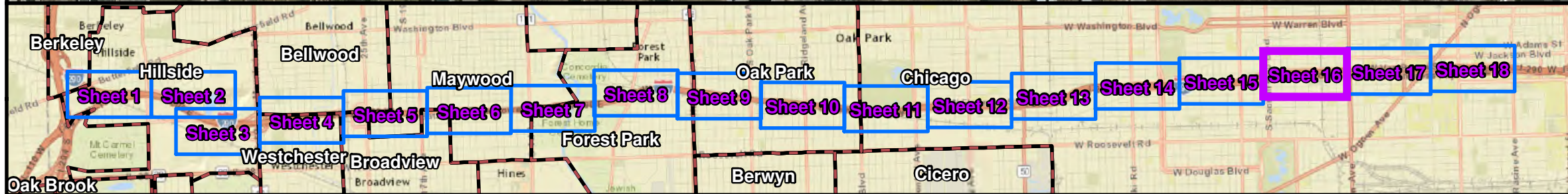
Huff & Huff, Inc.

Undeveloped Lands Analysis
 I-290 (IL56/Butterfield Rd to Racine Ave)
 Cook County, Illinois
 Sheet 15 of 18



For all Activity Category G areas from Independence to Western in the City of Chicago, Build 2040 noise levels are expected to:

- Approach, meet, or exceed an NAC of 67 dB(A) within 400' of I-290
- Approach, meet, or exceed an NAC of 72 dB(A) within 200' of I-290



0 250 500
Feet

Aerial Source: USDA-FSA-APFO NAIP MrSID Mosaic, 2012

Primary Land Use	Secondary Land Use
B	C
C	E
E	F
F	G
G	

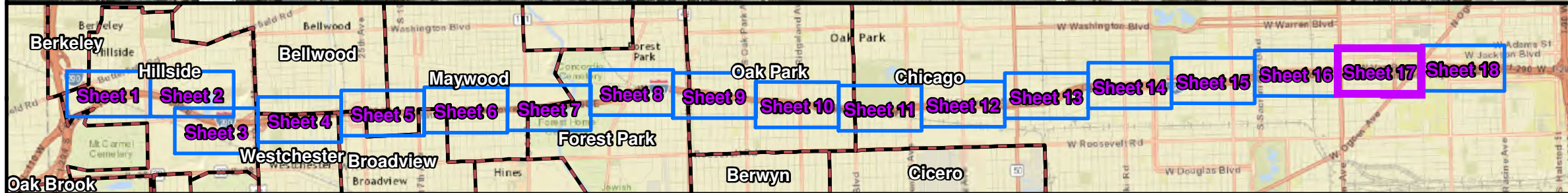
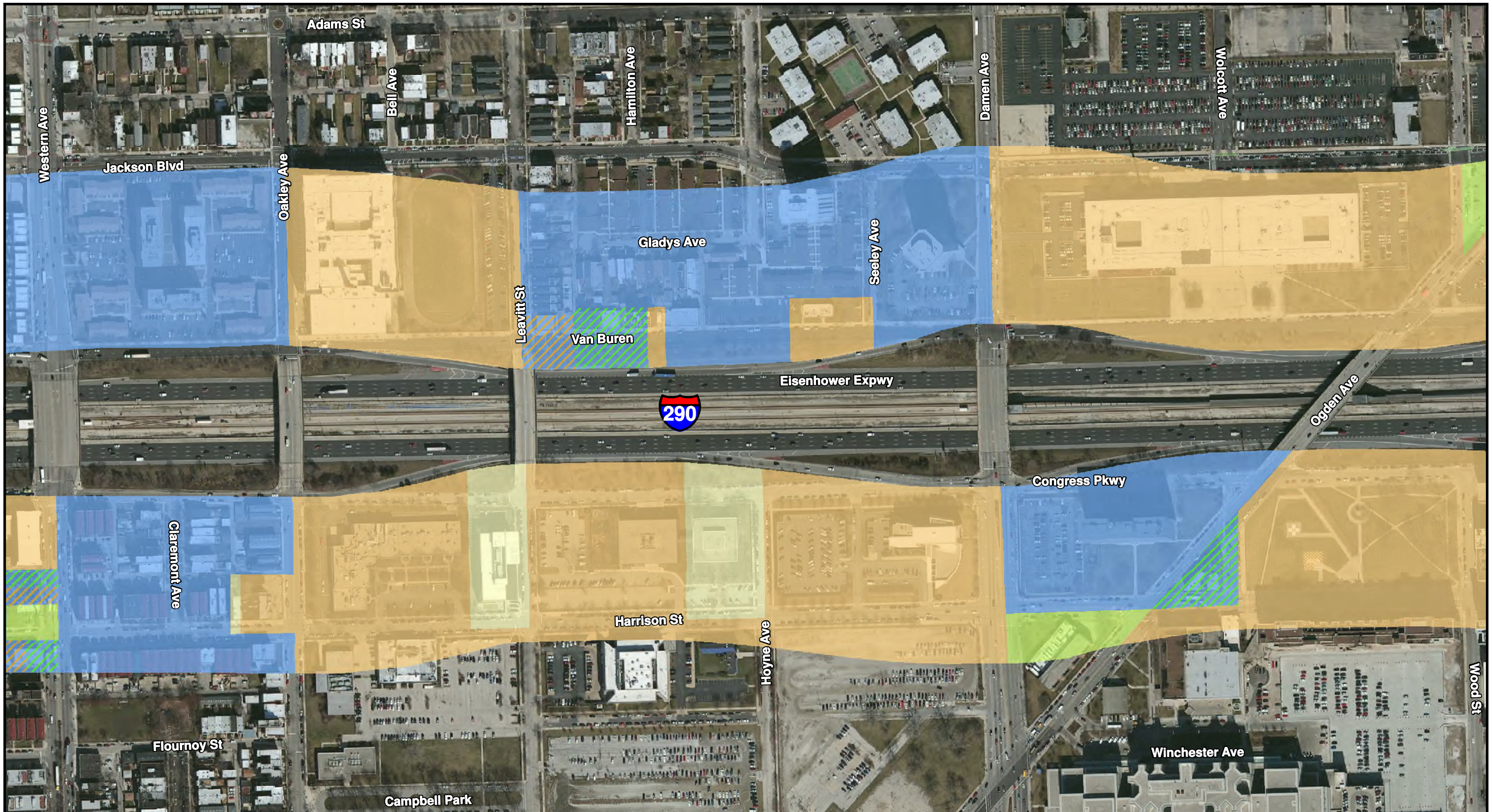
Activity Category

Activity Category	Activity Category
C	E
E	F
F	G

Municipal Boundary

Huff & Huff, Inc.

Undeveloped Lands Analysis
I-290 (IL56/Butterfield Rd to Racine Ave)
Cook County, Illinois
Sheet 16 of 18



Aerial Source: USDA-FSA-APFO NAIP MRSID Mosaic, 2012

Legend	
Primary Land Use	Secondary Land Use
Activity Category	Activity Category
B	C
C	E
E	F
F	G
G	Municipal Boundary

Huff & Huff, Inc.

Undeveloped Lands Analysis
 I-290 (IL56/Butterfield Rd to Racine Ave)
 Cook County, Illinois
 Sheet 17 of 18