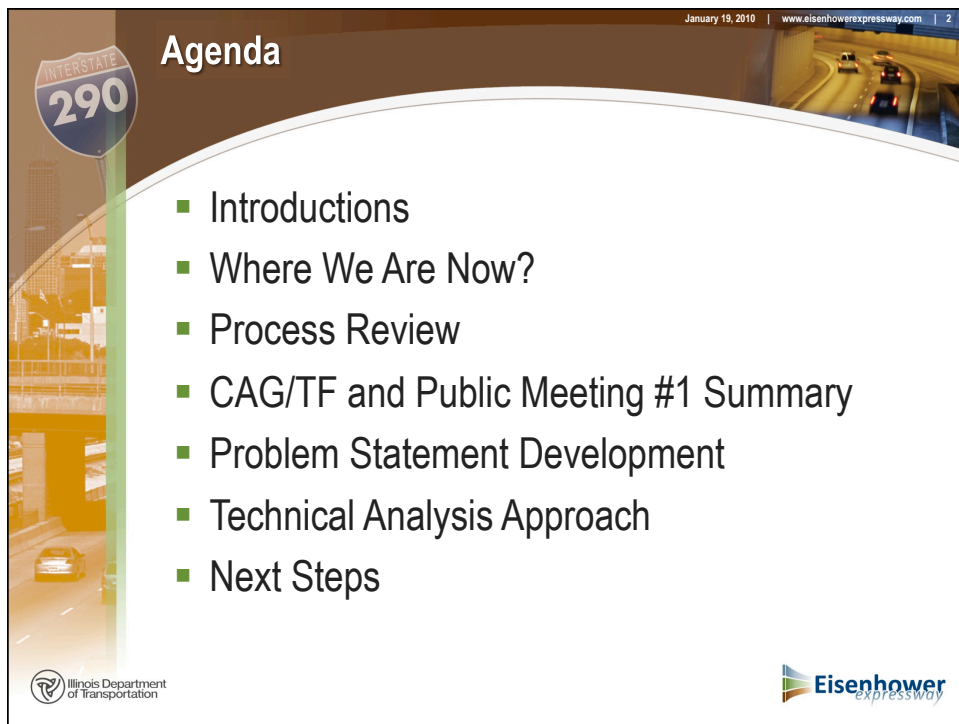




Corridor Advisory Group and Task Force Meeting #2



January 19, 2010



January 19, 2010 | www.eisenhowerexpressway.com | 2

Agenda

- Introductions
- Where We Are Now?
- Process Review
- CAG/TF and Public Meeting #1 Summary
- Problem Statement Development
- Technical Analysis Approach
- Next Steps



Where We Are Now?

Illinois Department of Transportation

Eisenhower expressway

January 19, 2010 | www.eisenhowerexpressway.com | 4

Study Process

Data Collection

- Community Context Audits
- Transportation Issues/Goals
 - Problem Statement
- Understand Existing Conditions
 - Identified Deficiencies

We are here

Purpose & Need

Concept Alternatives

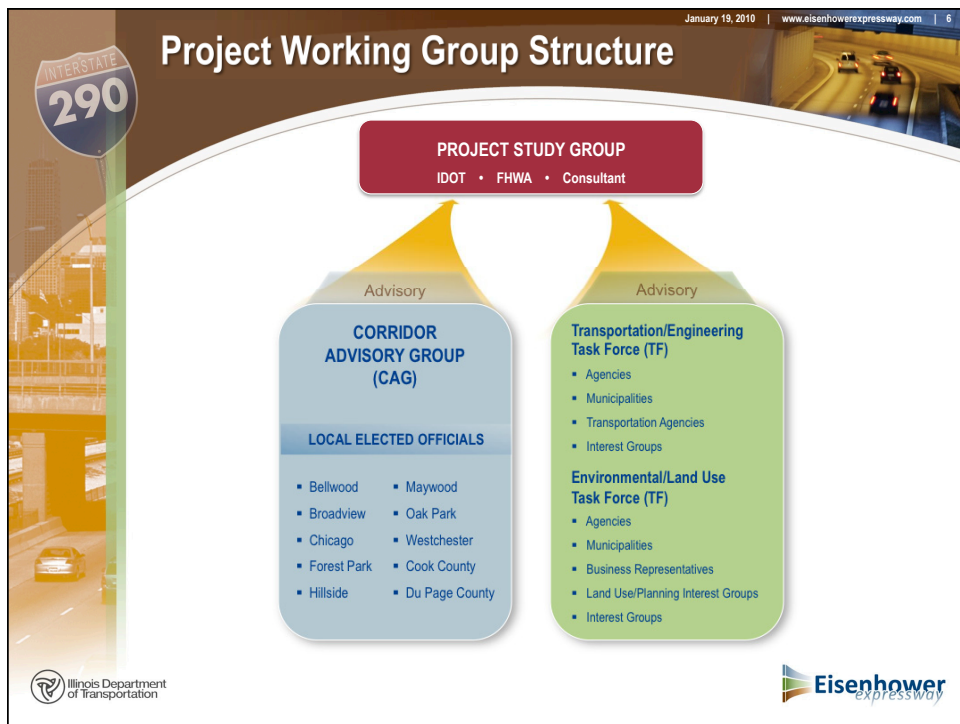
Preferred Alternative

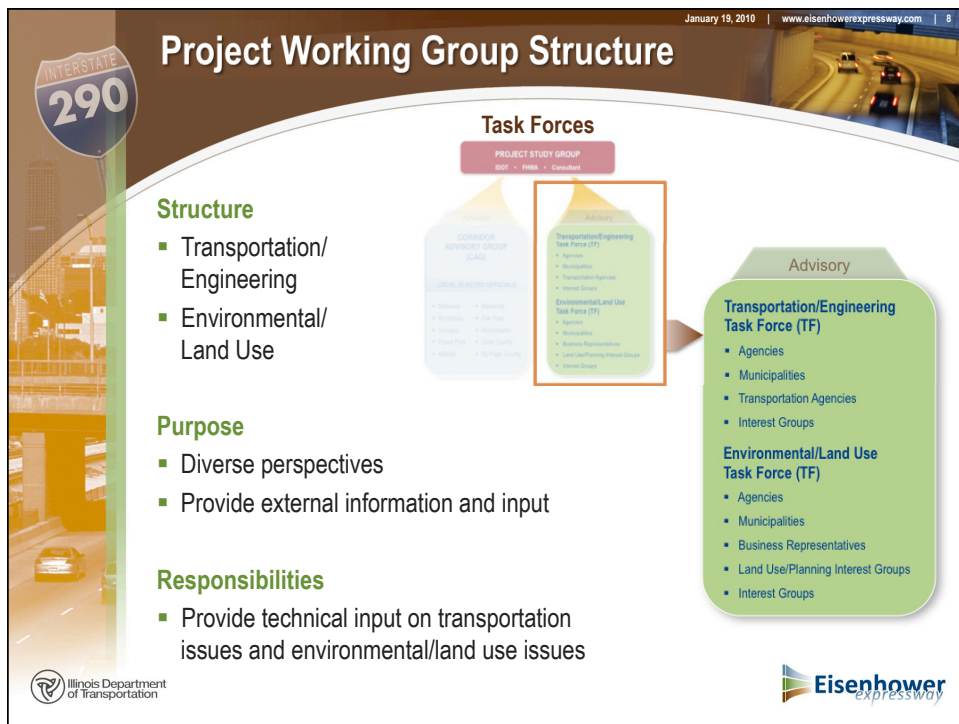
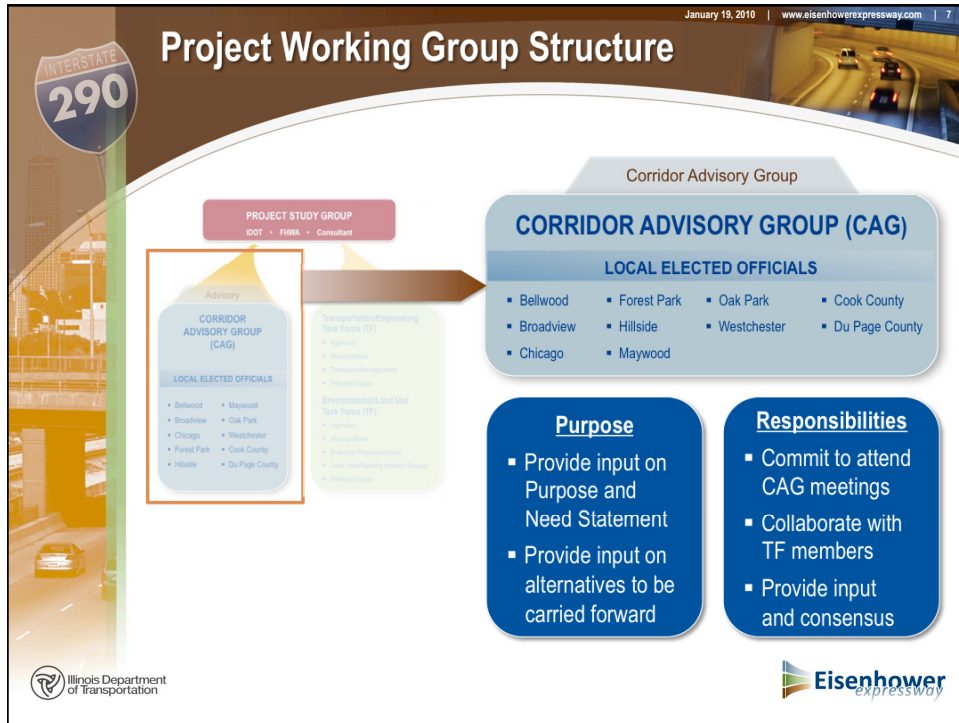
Community Involvement

Agency Input

Illinois Department of Transportation

Eisenhower expressway







January 19, 2010 | www.eisenhowerexpressway.com | 10

CAG and TF Meeting #1 Summary


- Held October 14, 2009
- Stakeholder Involvement Plan (SIP)
- Identified issues/concerns and goals/objectives

Illinois Department of Transportation

Eisenhower expressway



January 19, 2010 | www.eisenhowerexpressway.com | 11

CAG and TF Meeting #1 Summary



Identified Issues and Concerns

Issue/Concern Topics	Table 1	Table 2	Table 3	Table 4	Table 5
Congestion/Traffic	✓	✓	✓	✓	✓
Deficient Transit	✓	✓	✓	✓	✓
Multi-Modal Needs	✓	✓	✓		
Safety	✓		✓	✓	✓
Economic Development	✓			✓	✓
Environmental Sustainability	✓	✓	✓		
Land Use Compatibility	✓		✓		
Environmental Impacts		✓	✓	✓	✓
Funding/Cost	✓	✓	✓		✓
Study Process	✓	✓	✓	✓	


January 19, 2010 | www.eisenhowerexpressway.com | 12

CAG and TF Meeting #1 Summary




Identified Goals & Objectives

- Improve mobility (capacity and efficiency).
- Improve safety for motorists, transit users, bicyclists, and pedestrians.
- Coordinate with planned land uses and area developments.
- Facilitate economic growth.
- Minimize impacts to the surrounding environment.



January 19, 2010 | www.eisenhowerexpressway.com | 15



CAG/TF and Public Comment Period #1

Top Transportation Need Issues

- Improve congestion and mobility
- Improve transit and transit access
- Improve safety
- Improve pedestrian and non-motorized facilities





Problem Statement



January 19, 2010 | www.eisenhowerexpressway.com | 17

Problem Statement – What is it and How will it be used?


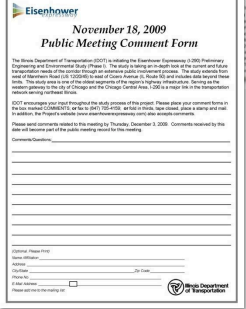


- A concise narrative
- Defines a situation or circumstances to be solved
- Expresses a desired situation not being achieved
- Factors that contribute to unacceptable performance
- Does not describe specific solutions

January 19, 2010 | www.eisenhowerexpressway.com | 18



Problem Statement – What was used?

- CAG-TF meeting #1 workshop input
- PM #1 comment period input








January 19, 2010 | www.eisenhowerexpressway.com | 19

Draft Problem Statement






The I-290 study area is a multimodal corridor with a complex network of roadway, public transit, freight railroad, and non-motorized facilities and services. Improved mobility, modal options, and integration of transportation and land use are desired to support economic development and enhance the quality of life. Study area roadway related issues include infrastructure condition, traffic congestion on the Eisenhower Expressway and arterial roads, safety, truck traffic, and the resultant noise and air pollution. Public transit related issues include lack of modal choices, connectivity, access, speed of service, and infrastructure condition. Improved connectivity, accessibility, safety, and suitability of pedestrian and bicycle facilities are study area non-motorized transportation related issues.






January 19, 2010 | www.eisenhowerexpressway.com | 20

Draft Problem Statement (cont.)

The existing built environment presents significant challenges in improving the corridor's transportation elements. Sustainable solutions to transportation problems need to be developed, while avoiding and minimizing impacts to the surrounding environment. These solutions need to be cost-effective and may require substantial funding. The solutions also need to be coordinated with all modes, promote economic development, and be integrated with community land use plans. Stakeholder participation in arriving at workable and effective solutions is a fundamental part of the process.



Discussion

Illinois Department of Transportation

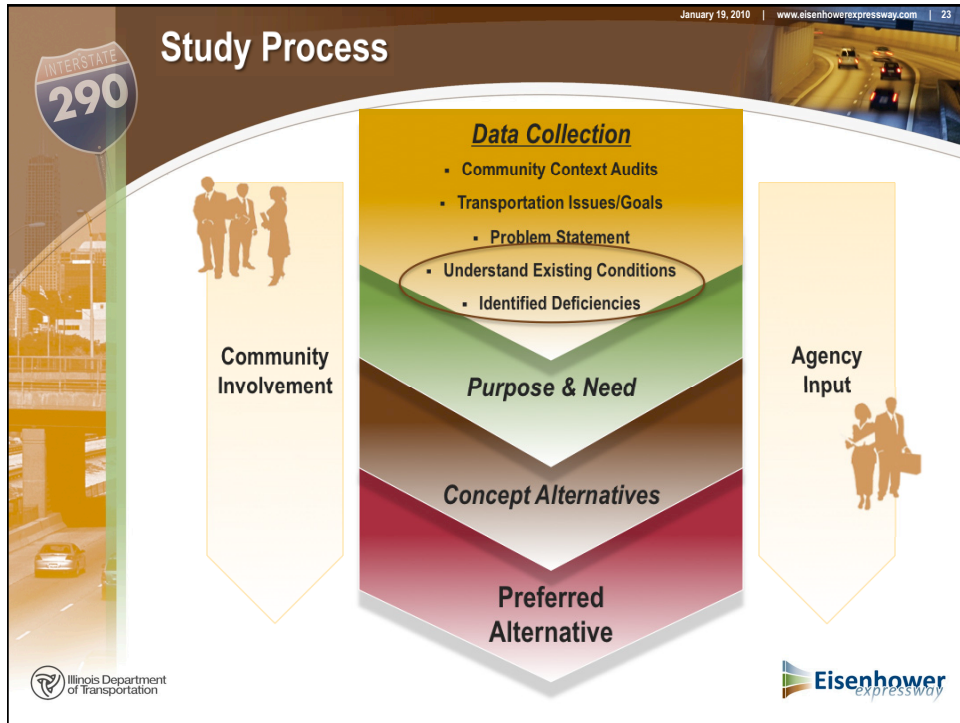
Eisenhower
expressway



Technical Analysis Approach

Illinois Department of Transportation

Eisenhower
expressway



January 19, 2010 | www.eisenhowerexpressway.com | 24

Technical Studies

Travel Demand Model

- CMAP coordinates planning across region
- CMAP administers regional travel models
 - Existing Travel Demand Model (2010)
 - 2030 Travel Demand Model – Baseline
- Models refined for I-290 Studies
 - Project Baseline /No Build
 - I-290 Improvements Removed
 - Population and Employment Forecasts
 - Baseline Traffic Forecast

Supports NEPA Requirements



- Purpose and Need
- Alternatives Development and Evaluation

Illinois Department of Transportation

Eisenhower expressway



January 19, 2010 | www.eisenhowerexpressway.com | 25

Travel Demand Forecasting






- **CMAP travel model enhancements**
 - Trip generation
 - Trip distribution
 - Mode choice
 - Trip assignment
- **I-290 Focus Area Improvements**
 - Detailed zone system
 - Detailed network coding

*Studies Performed
in Consultation
with CMAP*



January 19, 2010 | www.eisenhowerexpressway.com | 26

Travel Demand Forecasting





Wisconsin

Illinois

Michigan



Indiana

Detailed Area Zones

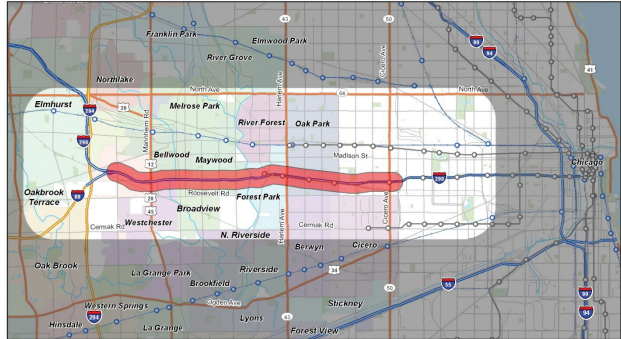




January 19, 2010 | www.eisenhowerexpressway.com | 27

Study Area Definition



- **Broader Study Area**
 - Considers the I-290 corridor as part of a broader transportation network
- **Focused Study Area**
 - Detailed evaluation of operations, safety and physical facilities








January 19, 2010 | www.eisenhowerexpressway.com | 28

Existing Conditions: Major Elements






- **Roadways**
 - Operational, Capacity, Safety, Engineering Standards, Structures and Drainage
- **Public Transportation**
 - Engineering Standards, Service and Multi-modal Connectivity
- **Freight Railroads**
 - Engineering Standards, Operations and Drainage






January 19, 2010 | www.eisenhowerexpressway.com | 29

Existing Conditions: Major Elements






- **Non-Motorized Transportation**
 - Bicycle and Pedestrian
- **Socioeconomic and Land Use**
 - Population & Employment
 - Minority, Low Income and Zero Car Households
 - Existing Land Uses

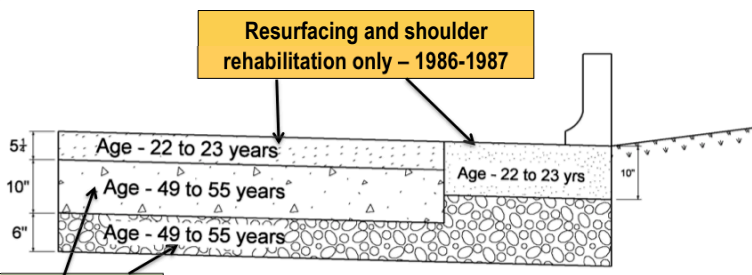



January 19, 2010 | www.eisenhowerexpressway.com | 30

Roadway: Pavement










Resurfacing and shoulder rehabilitation only – 1986-1987

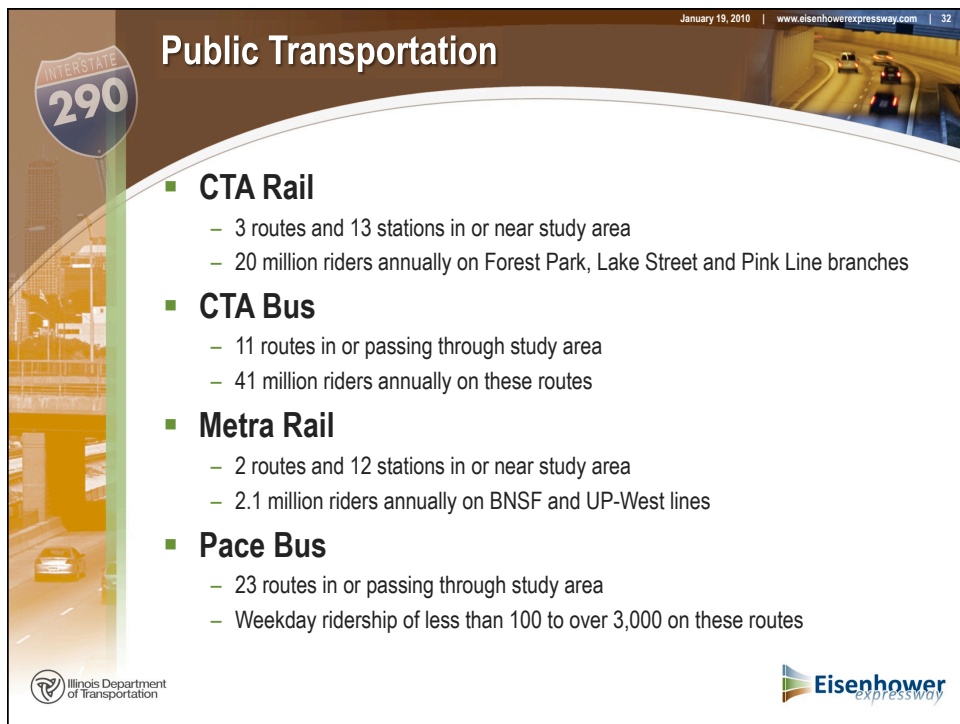
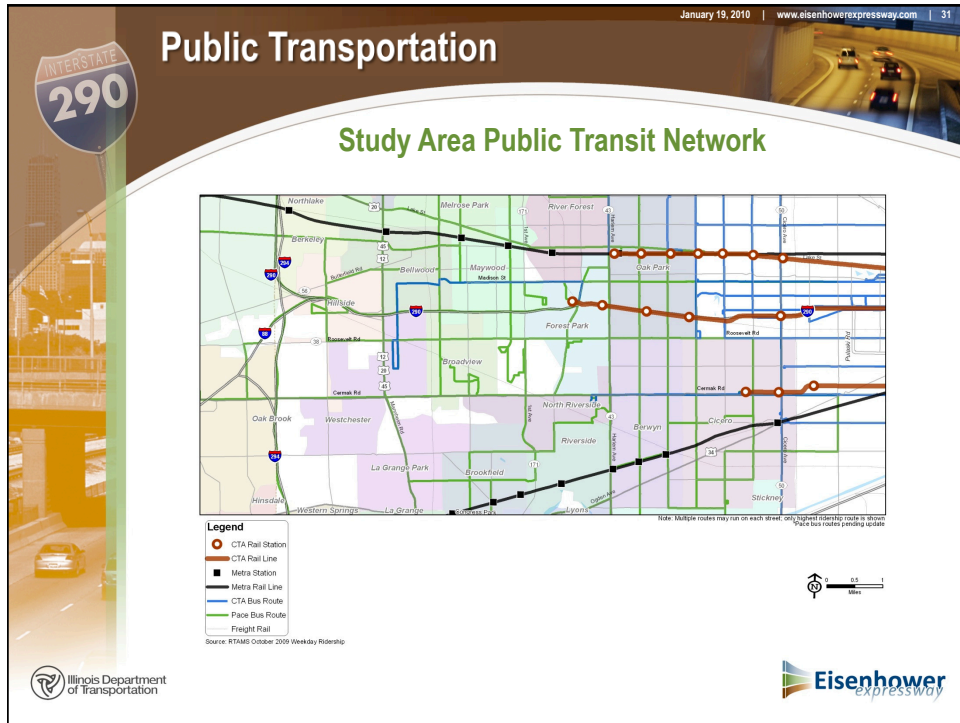


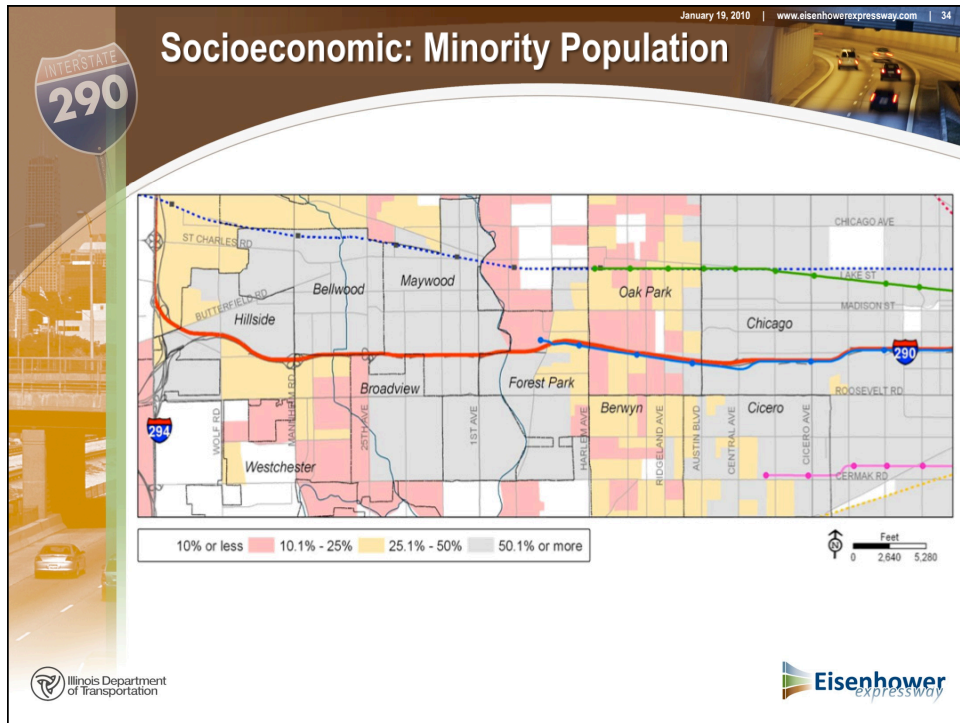
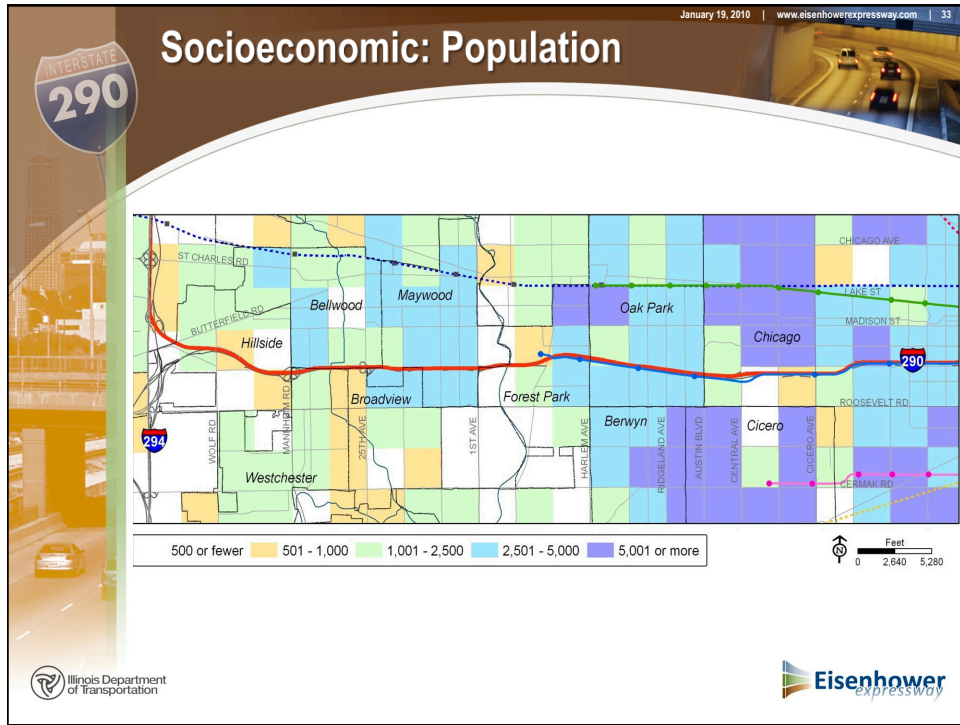
Original construction (still in place) 1954-1960

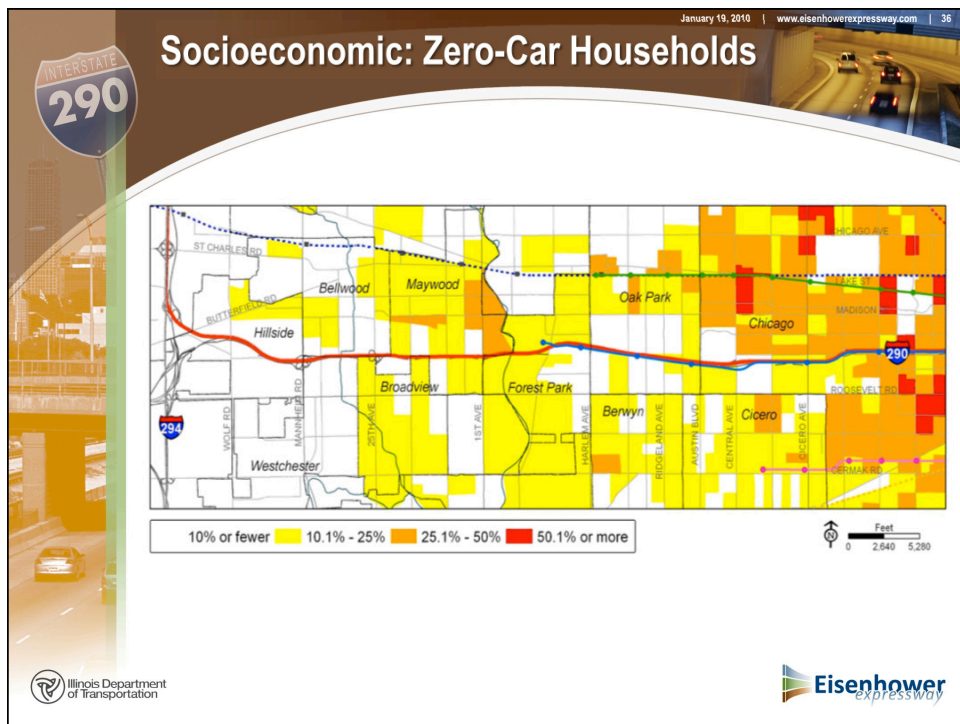
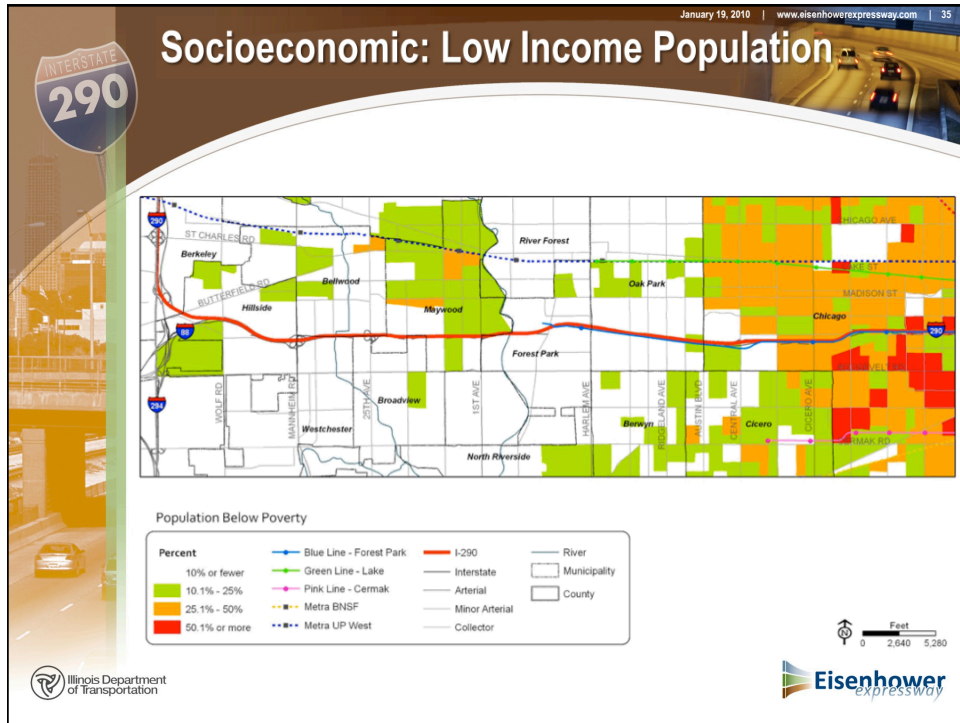
I-290 Existing Conditions (2009)

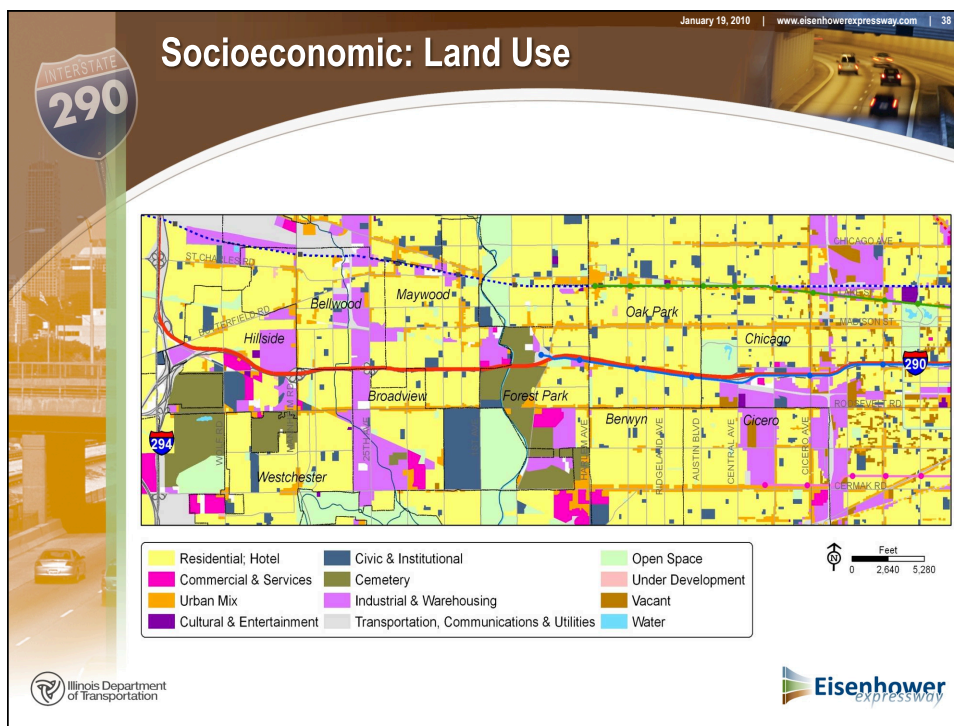
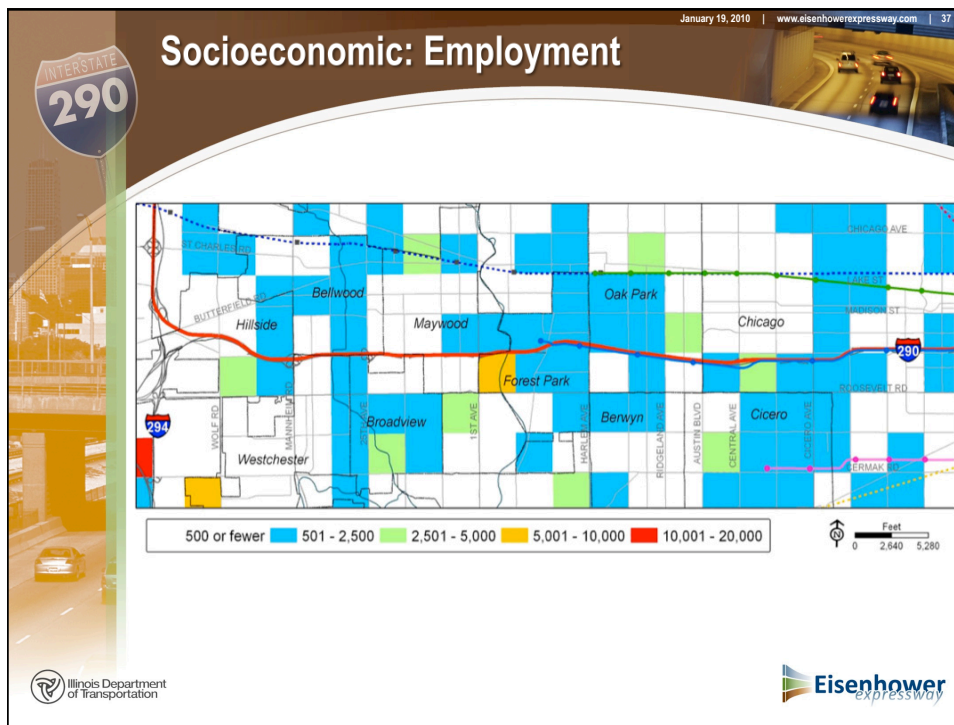
 BITUMINOUS SHOULDER	 GRANULAR SUB-BASE
 BITUMINOUS OVERLAY	 PCC PAVEMENT












January 19, 2010 | www.eisenhowerexpressway.com | 41





Upcoming Meetings

CAG-TF Meeting #3 – February 17, 2010 (tentative)

- Initial technical analysis

CAG-TF Meeting #4 – March 17, 2010 (tentative)

- Technical analysis follow-up
- Purpose & Need discussion
- General toolbox

January 19, 2010 | www.eisenhowerexpressway.com | 42



Next Steps

- **Technical Analysis**
 - Existing Conditions Report
 - Develop 2030 Baseline based on CMAP model and regional plan
- **Purpose & Need Statement**
- **Evaluation Criteria**
- **Identify Initial Alternatives**
- **Evaluate & Screen Initial Alternatives**




Questions?

Illinois Department of Transportation

Eisenhower
expressway