



# Maywood Town Hall Meeting



*May 4, 2016*



- Overall I-290 Study Background
- Maywood Advisory Working Group (AWG) findings to date
- Noise Wall Update
- Next Steps

**Study team members  
also available in exhibit area**

*Q & A SESSION HELD AFTER PRESENTATION*

**Please submit  
your question  
cards to study  
team members**

**Questions?** Study team members will respond to anonymous questions presented by a moderator. If you have a question, please write it on this card and drop it in the question box. Also, please feel free to speak to one of the Study Team representatives.  
*Thank you for your participation!*

---

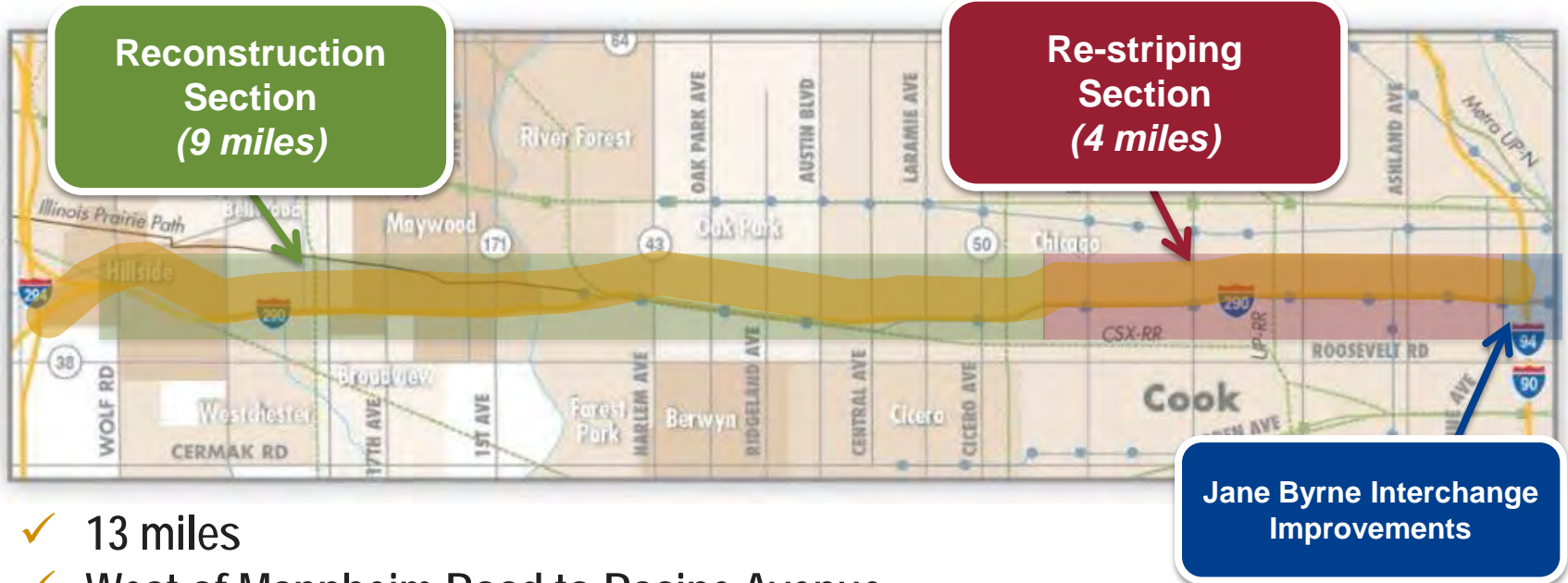
---

---

---

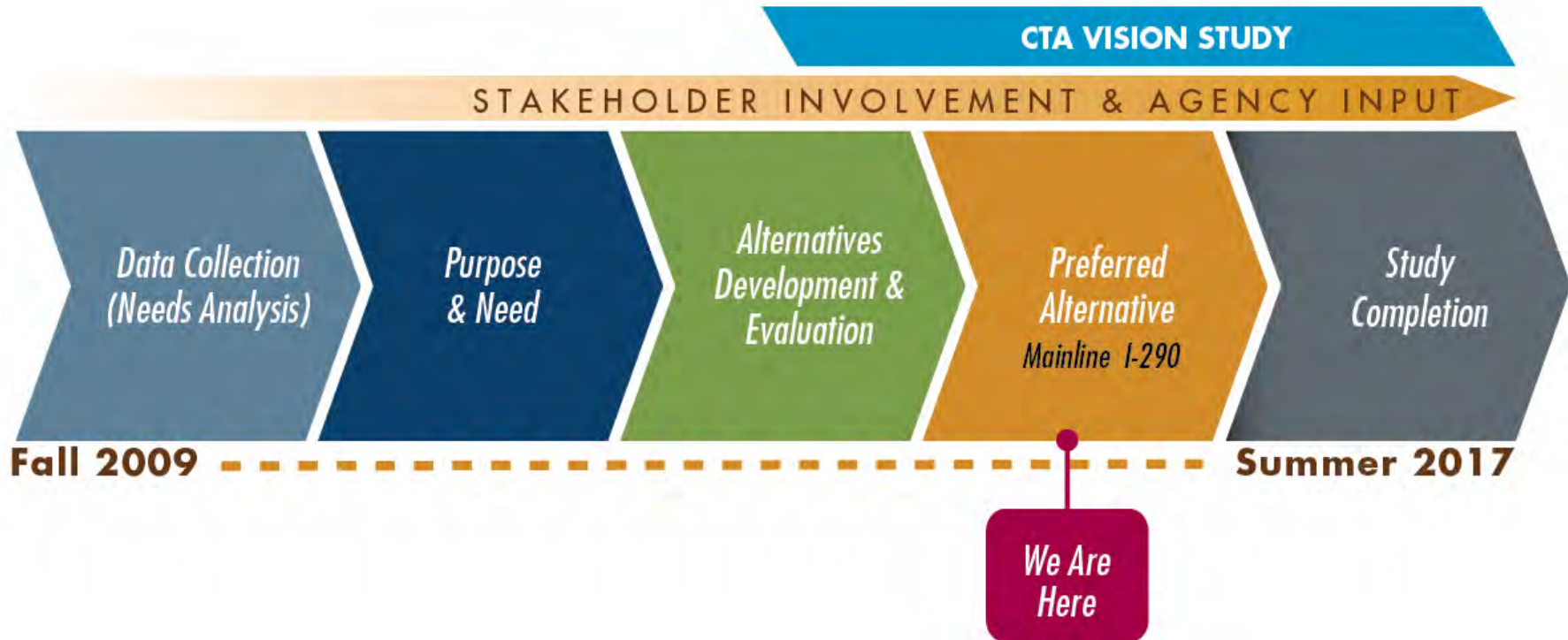


# I-290 Study Area



- ✓ 13 miles
- ✓ West of Mannheim Road to Racine Avenue
- ✓ Connects between:
  - I-88 on the west
  - Jane Bryne Interchange on the east

# I-290 Study Overview



## Transportation needs to be addressed

- ✓ Mobility, safety, condition, design
- ✓ Connections between travel modes
- ✓ Access to jobs

### OVERALL GOAL

*Create an asset for adjoining communities*



# Transportation Needs, Alternatives Summary

## Alternatives development evaluation

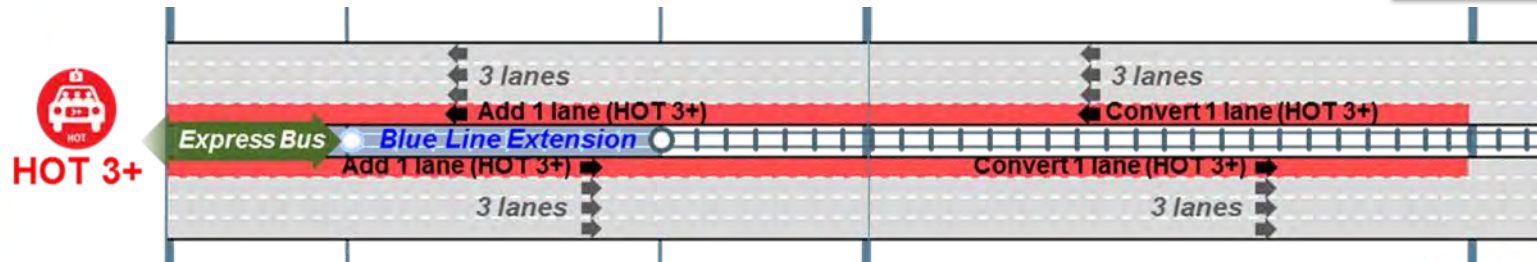
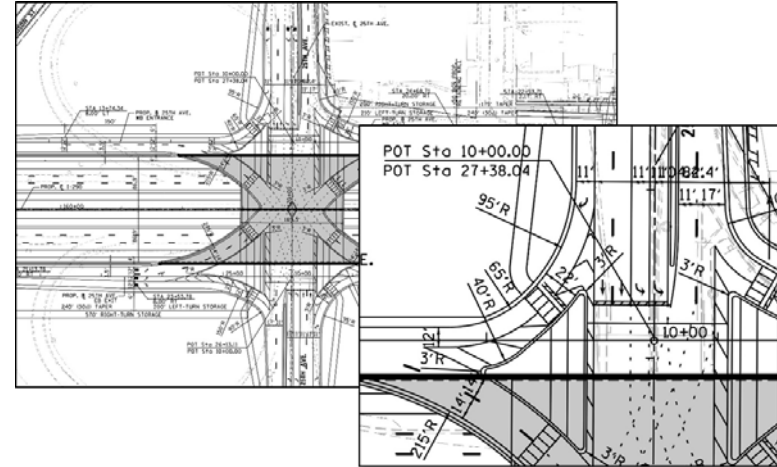
- Three evaluation rounds, CTA Blue Line Vision Study

## Engineering considerations

- Evaluation rounds 1 and 2 – conceptual alternatives, travel model
- Evaluation round 3 – geometry

## Environmental Considerations

- Communities are the environment





## Environmental considerations

- The communities are the environment
- Priority – stay within existing right of way
- Environmental effects not a distinguishing factor

## Stakeholder concerns

- Access
- Economic benefits



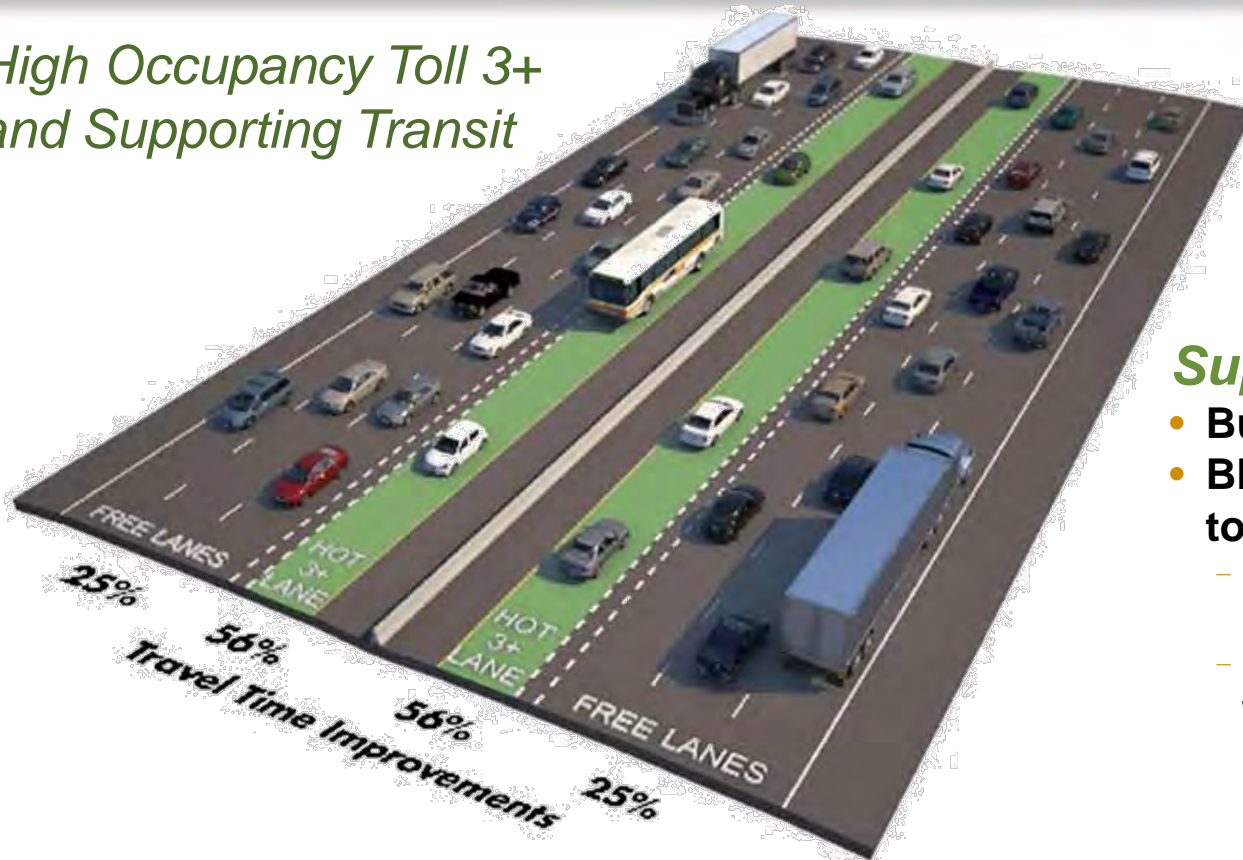
# CTA Vision Study Recommendations

- **Complete reconstruction/modernization for the Forest Park branch**
  - Bring existing service speeds up to state of good repair
  - Maintain existing station access
  - Maintain existing service – no 3<sup>rd</sup> track or express service
  - Remove stations closed in the 1970s
  - Redesign Forest Park terminal, yard and shop
  - Improve terminal site
- **Work with IDOT to refine design, develop staging concept, explore joint funding opportunities**
- **Preserve footprint for future extension (supportive land use required)**



# I-290 Mainline Preferred Alternative

*High Occupancy Toll 3+  
and Supporting Transit*



## *Supporting Transit:*

- **Bus Feeder Service**
- **Blue Line Extension to Mannheim**
  - Initial service option - bus in managed lane
  - I-290 corridor improvements will enable/leverage transit improvement

\* The Preferred Alternative is the same for all Maywood access options



## MULTI-MODAL:

- Improved design for motorists, bicyclists, and pedestrians
- Wider sidewalks, new east-west and multi-use path

## TRANSIT TRIPS

- Increase of east-west daily transit trips

## TRAVEL TIME SAVINGS

- In managed lanes and general purpose lanes



## PRODUCTIVITY:

- TIME = MONEY



## SAFETY

- Overall safety improvements

## ACCESS TO JOBS

- Increased access to jobs within 60 minutes







# Maywood AWG Process

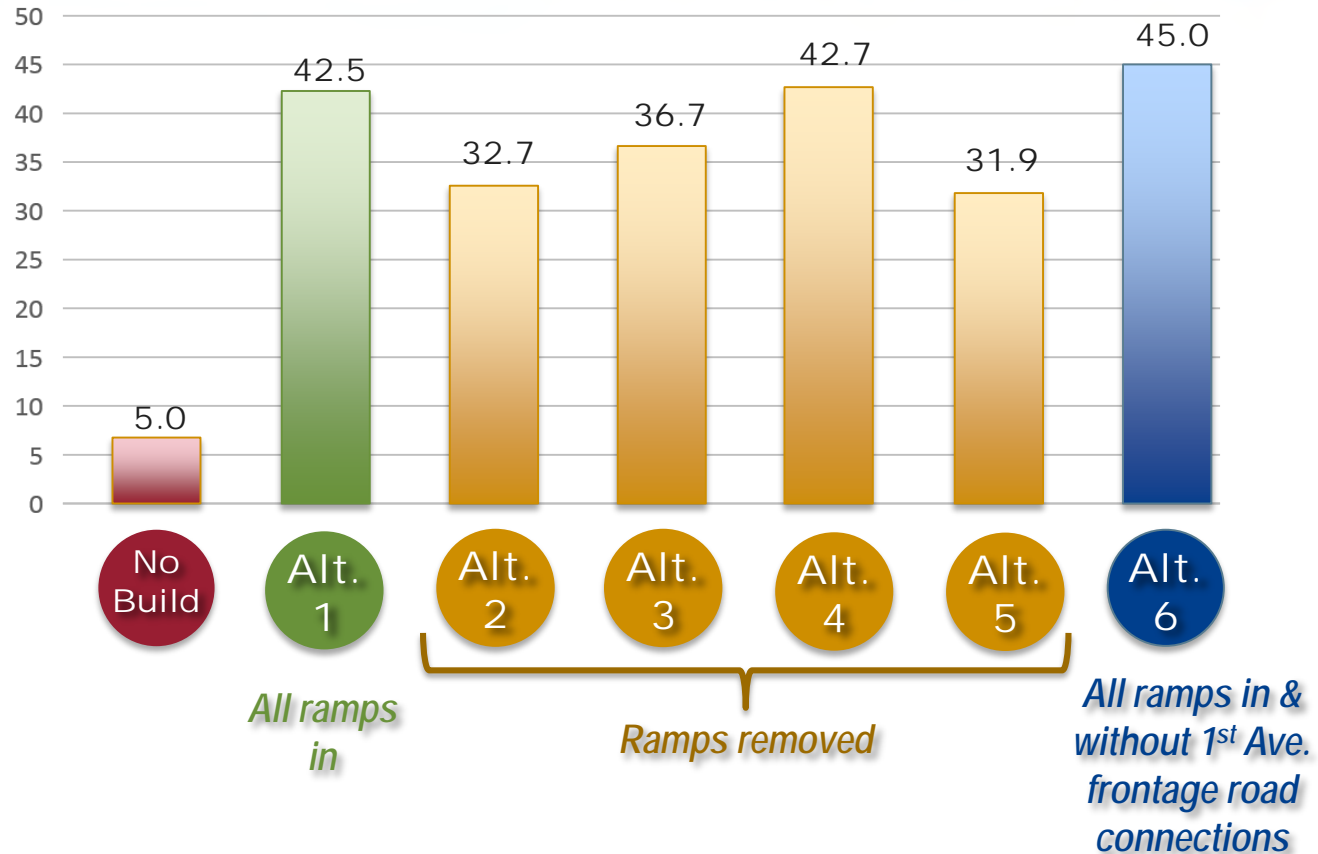
## Keeping all ramps open is a viable solution

*Pending final Federal Highway Administration Approval*

- **2 top performing alternatives – 1 & 6**
  - Both alternatives retain all existing ramps
  - Alternative 6 is variation of Alternative 1
    - Alt 6 best performing overall
    - Alt 6 – without frontage road connections at 1<sup>st</sup> Avenue
      - Improves traffic flow along 1<sup>st</sup> Avenue
      - Frontage road – 10% local trips / 90% non-local trips

# Alternatives Analysis and Findings

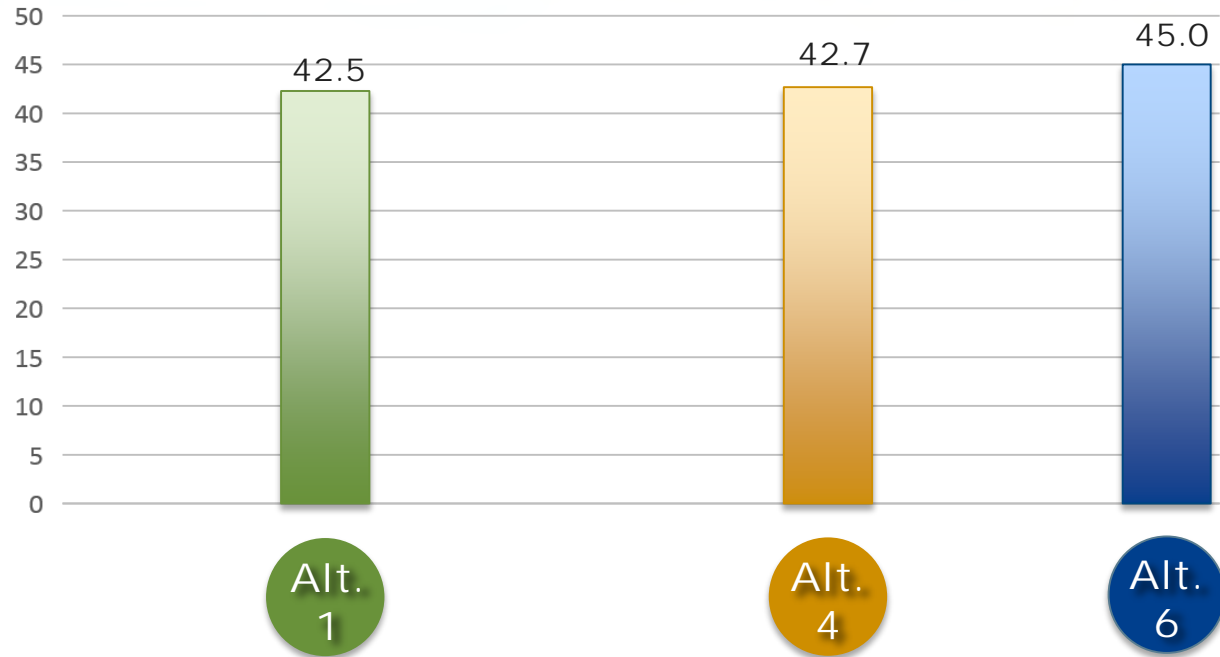
- Safety, traffic, & travel related factors
  - Local & I-290 factors





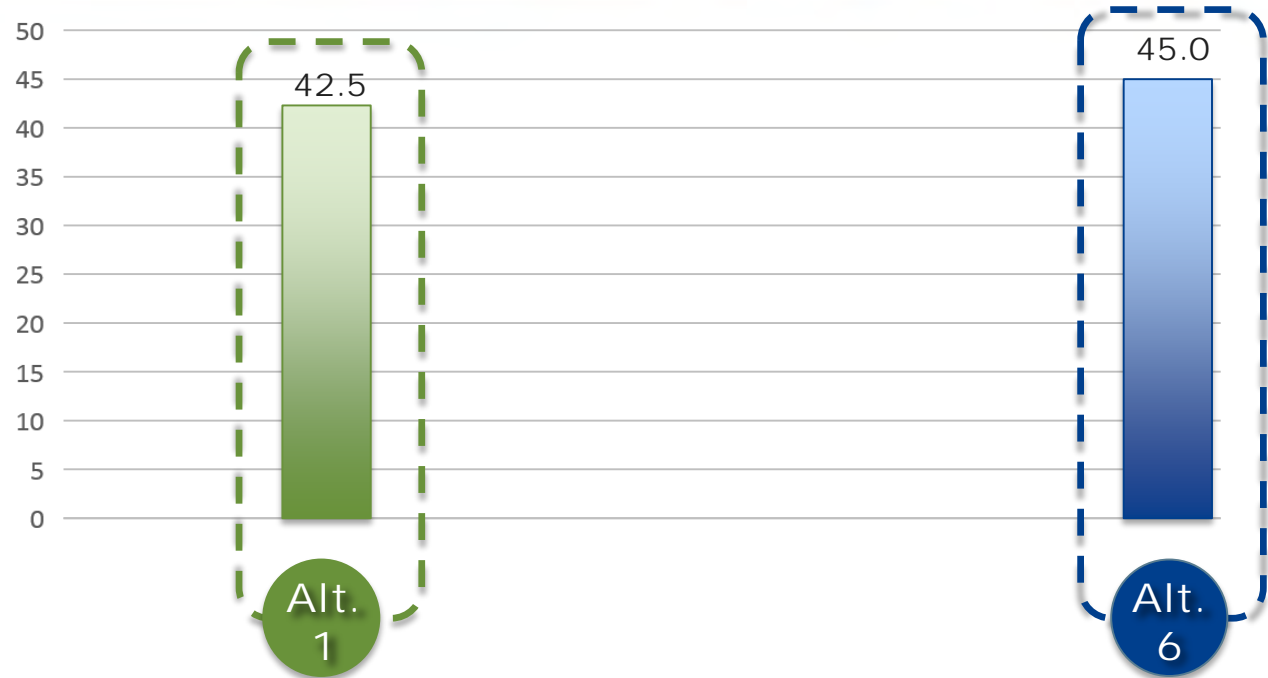
# Alternatives Analysis and Findings

- Safety, traffic, & travel related factors
  - *Local & I-290 factors*
- Alternatives 1 & 4 have similar overall performance
- Alternatives 1 & 6 address community context



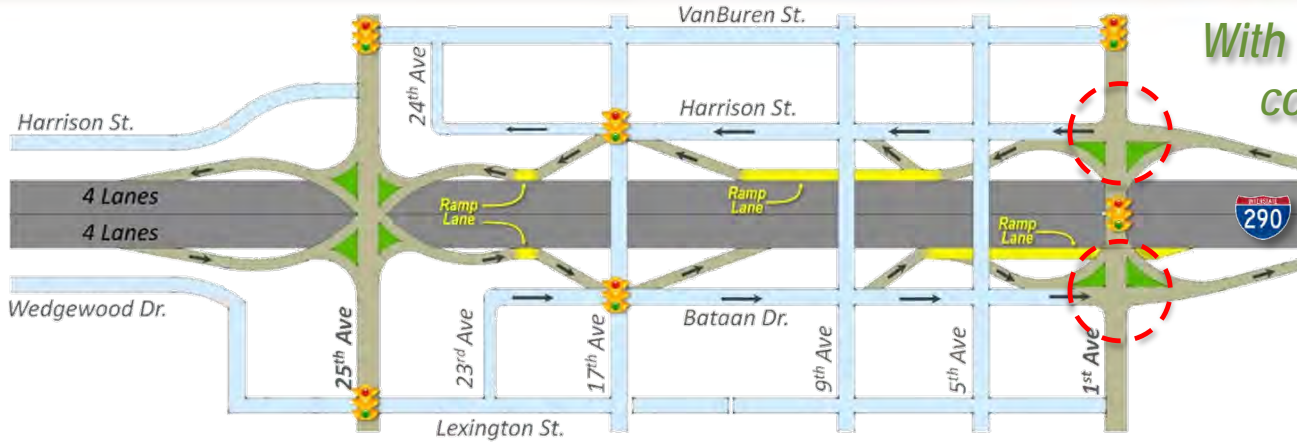
# Alternatives Analysis and Findings

- Safety, traffic, & travel related factors
  - *Local & I-290 factors*
- Alternatives 1 & 6 recommended for further discussion



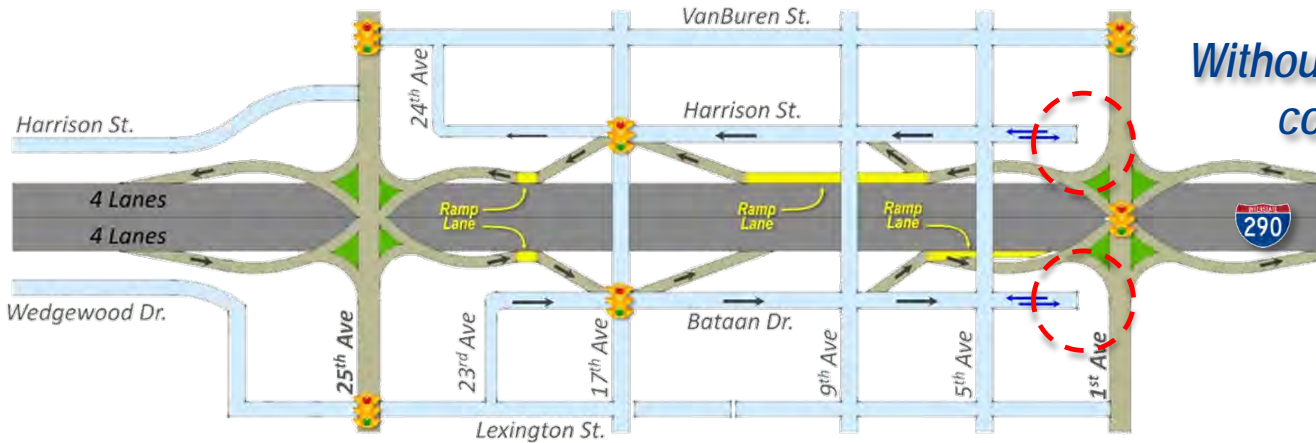
# Alternative 1 & 6 – All ramps open

Alt. 1



With frontage road connections

Alt. 6



Without frontage road connections



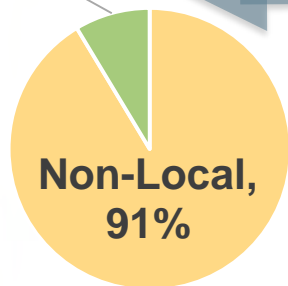
# Local Maywood Travel Patterns

## Overall Ramp Access Distribution (to/from I-290)

Via 25 <sup>th</sup> Avenue	Via 17 <sup>th</sup> Avenue	Via 9 <sup>th</sup> Avenue	Via 1 <sup>st</sup> Avenue
<b>8%</b>	<b>40%</b>	<b>16%</b>	<b>36%</b>

## 1<sup>st</sup> Avenue Access

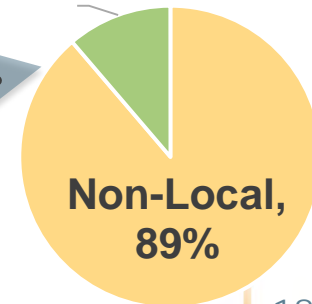
Local,  
9%



Harrison St. Through Trips



Local,  
11%



Bataan Dr. Through Trips

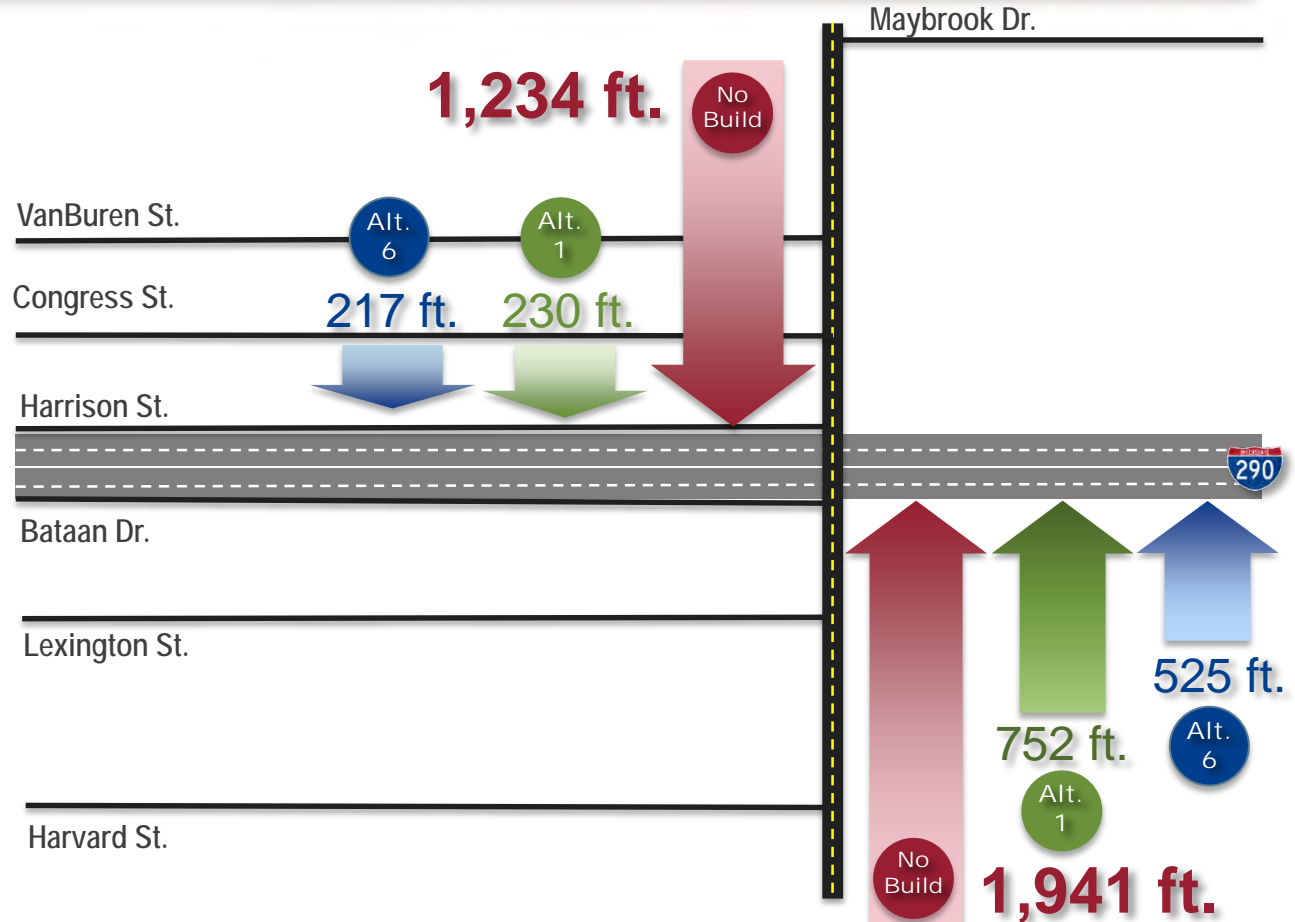
# Alternatives Benefits Comparison

		Alt. 1		Alt. 6	
Travel Time Savings		45 minutes saved		46 minutes saved	
Local Arterial Traffic		-5% overall reduction		-5% overall reduction	
1 <sup>st</sup> Avenue Traffic	Level of Service	C		B	
	Vehicle stacking	230 ft. southbound	752 ft. northbound	217 ft. southbound	525 ft. northbound
	Delay	63% reduction		74% reduction	
Safety Improvement (crash rate reduction)		9% Fewer crashes than no build		9% Fewer crashes than no build	
Mainline Travel Speed Improvement		123% Faster speed than no build		133% Faster speed than no build	

# 1<sup>st</sup> Avenue Queuing – Alternatives 1 & 6 PM Peak Period



No build/current vehicle stacking at 1<sup>st</sup> Ave. is more than 5 times as long as Options 1 & 6



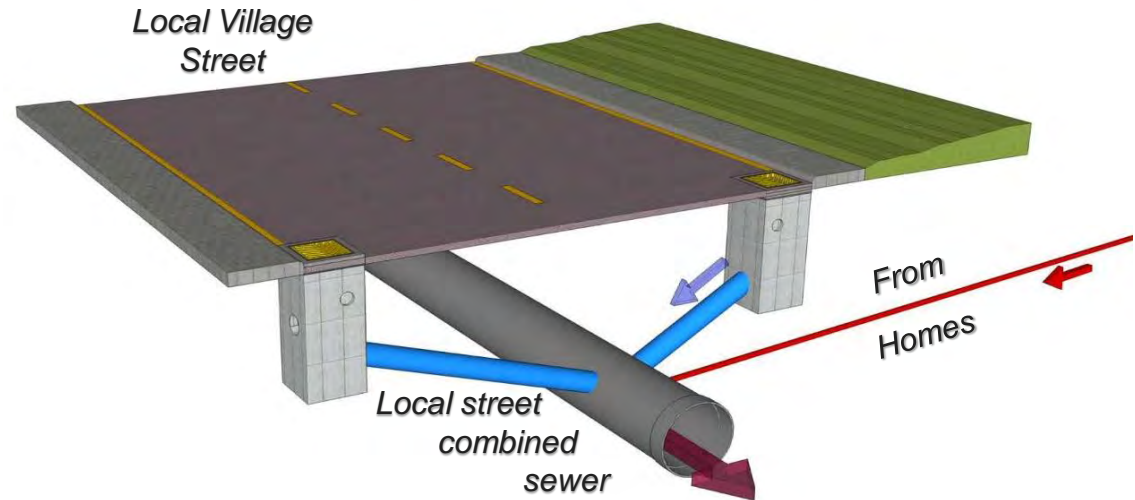


## *Other Benefits to Maywood*



- Both storm water & waste water are collected in the same pipe
- The system is undersized

## *Village Combined Sewer System*



# Existing Drainage Conditions

## *Village Storm Water Overflow Area*

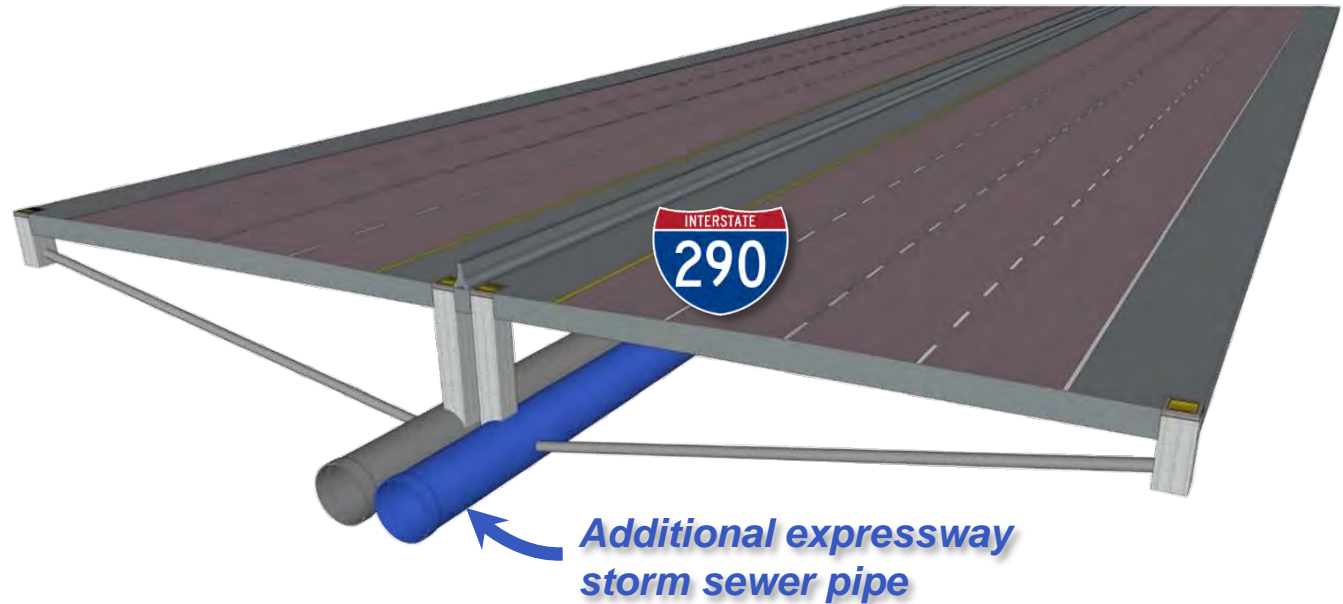
- When the Village system is overwhelmed, water overflows to the expressway
- The expressway drainage system is also undersized



# Proposed Drainage Improvements

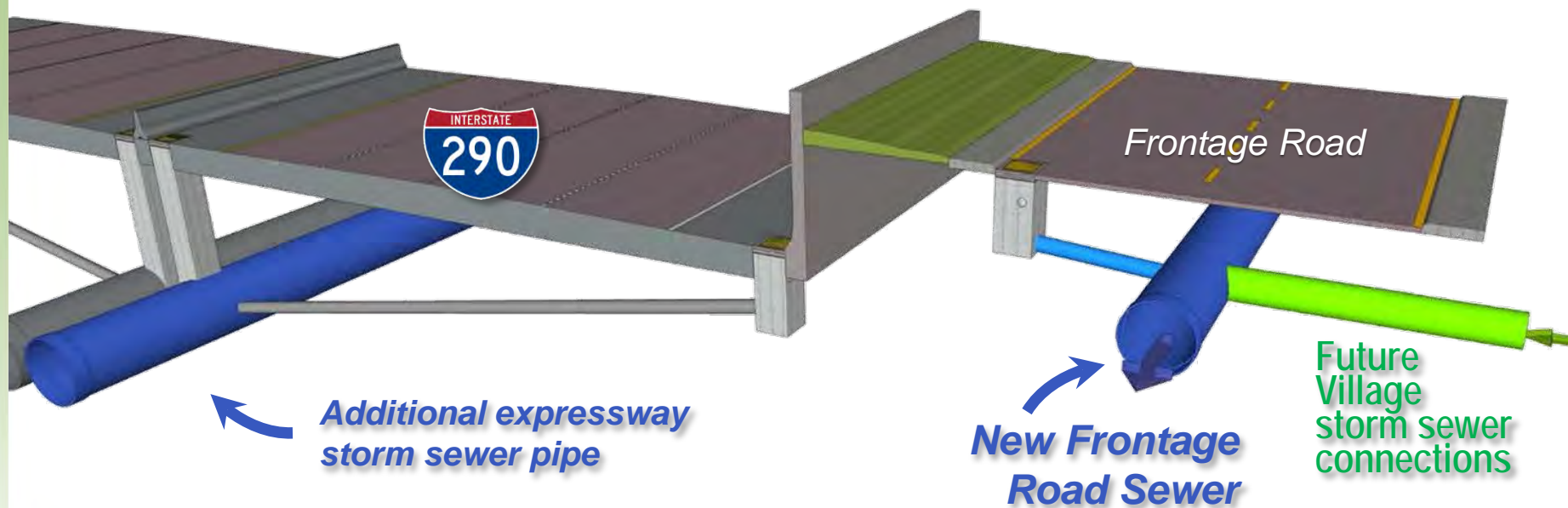
- The proposed I-290 drainage system will have increased capacity

## *Improved Expressway Drainage*



# Improved Expressway & Frontage Road Drainage

*Adds Capacity*

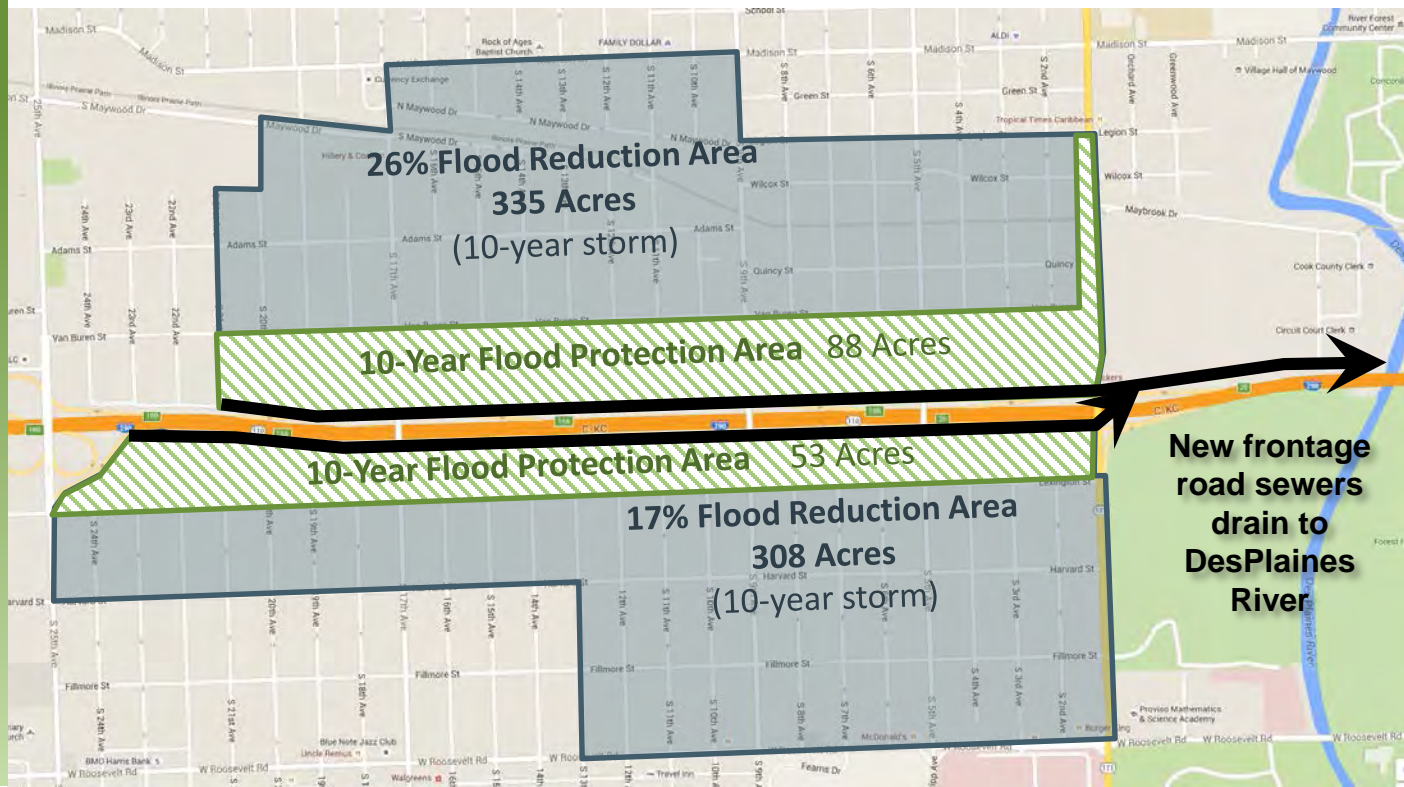




# Proposed Drainage Improvements

- Potential for reducing flooding in 141 acres of Village
- Secondary benefit for other areas
- Requires local sewer connections
- Additional coordination with Broadview, MWRD

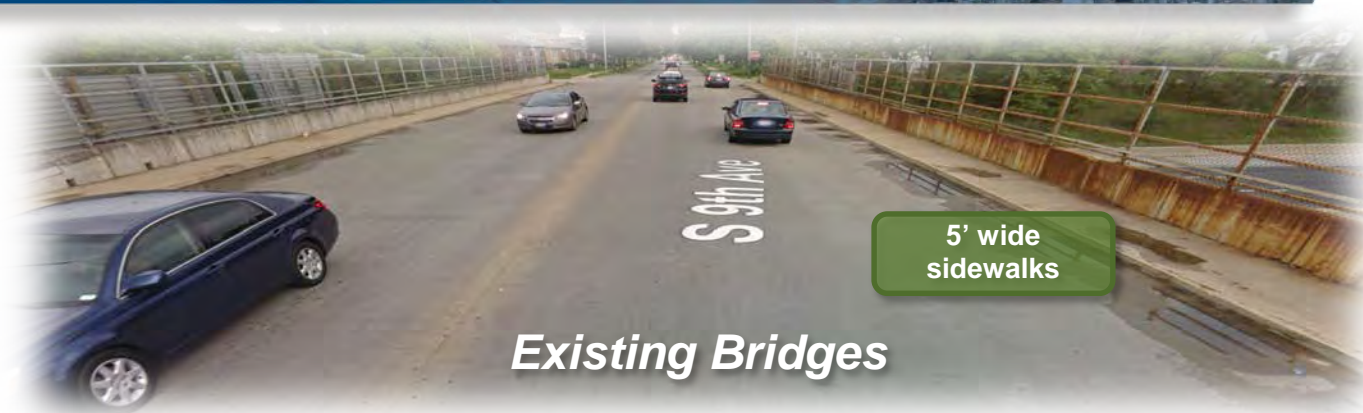
## *Improved Drainage Area*



# Improved Cross Road Bridges and Aesthetics

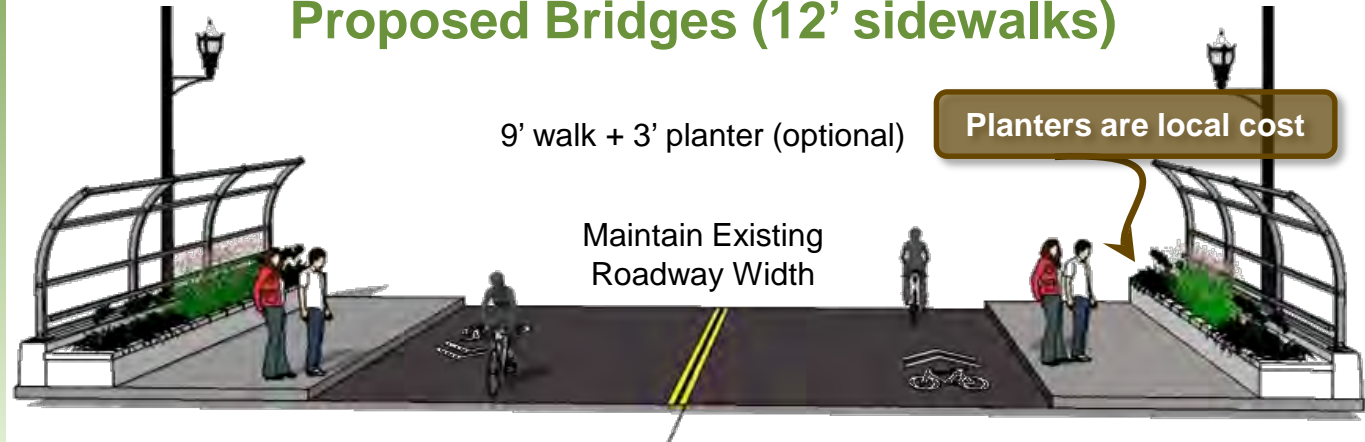
- Bridges replaced and include wider sidewalks:

- 17th Ave.
- 9th Ave.
- 5th Ave.



*Existing Bridges*

## Proposed Bridges (12' sidewalks)



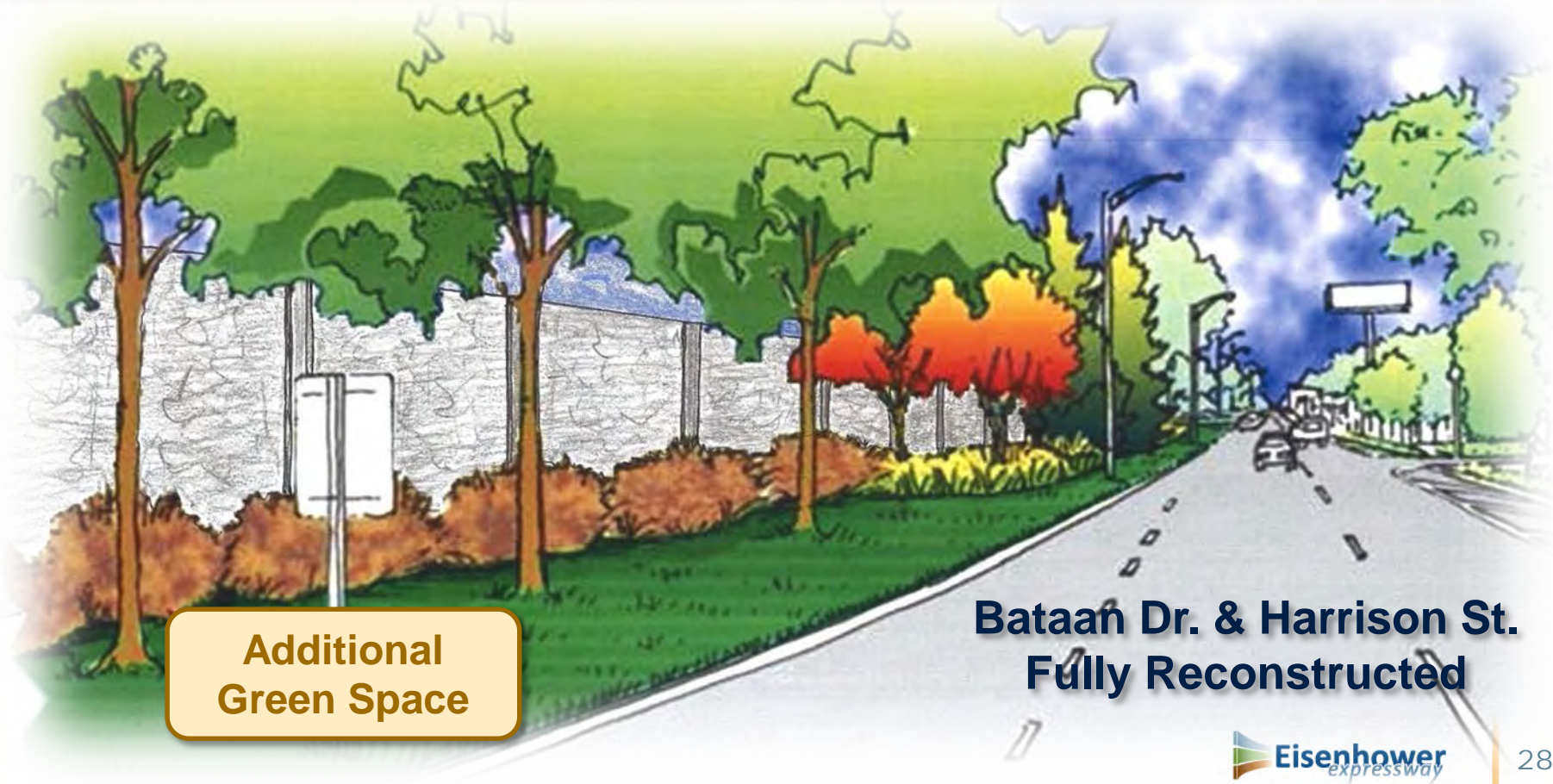
9' walk + 3' planter (optional)

Planters are local cost

Maintain Existing  
Roadway Width



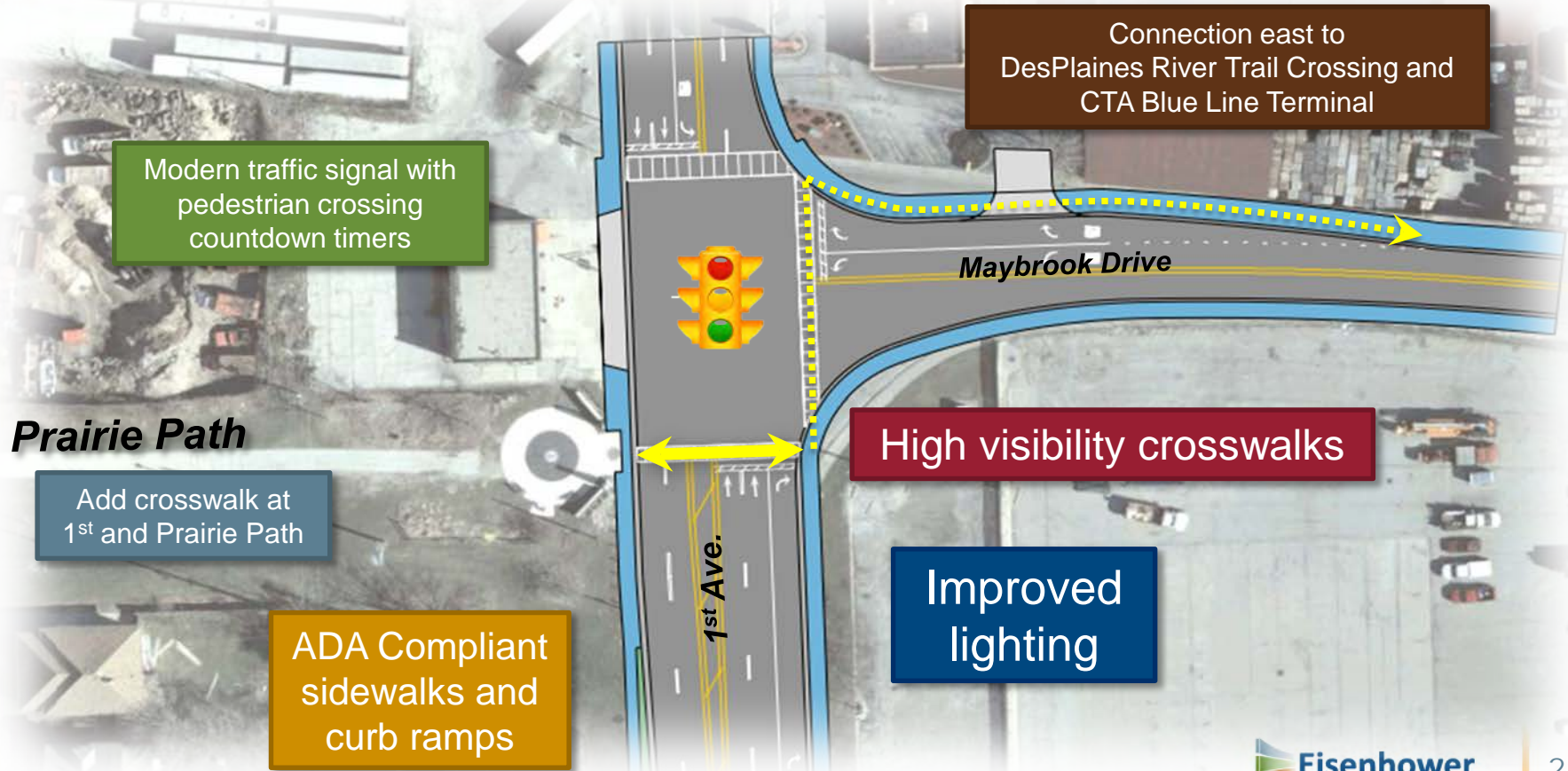
# Bataan Dr. & Harrison St. Reconstruction



**Additional  
Green Space**

**Bataan Dr. & Harrison St.  
Fully Reconstructed**

# Improved Pedestrian Crosswalk and Signalization



Modern traffic signal with pedestrian crossing countdown timers

Connection east to DesPlaines River Trail Crossing and CTA Blue Line Terminal

**Prairie Path**

Add crosswalk at 1<sup>st</sup> and Prairie Path

ADA Compliant sidewalks and curb ramps

High visibility crosswalks

Improved lighting





# Noise Wall Voting Update

# Traffic Noise Analysis Process



1

Identify Noise Receptors

2

Traffic Noise Level Determination

✓ *Modeling*

✓ *Validated by field monitoring*

3

Traffic Noise Impact Identification

4

Traffic Noise Abatement Analysis



# Current Noise Wall Voting Status

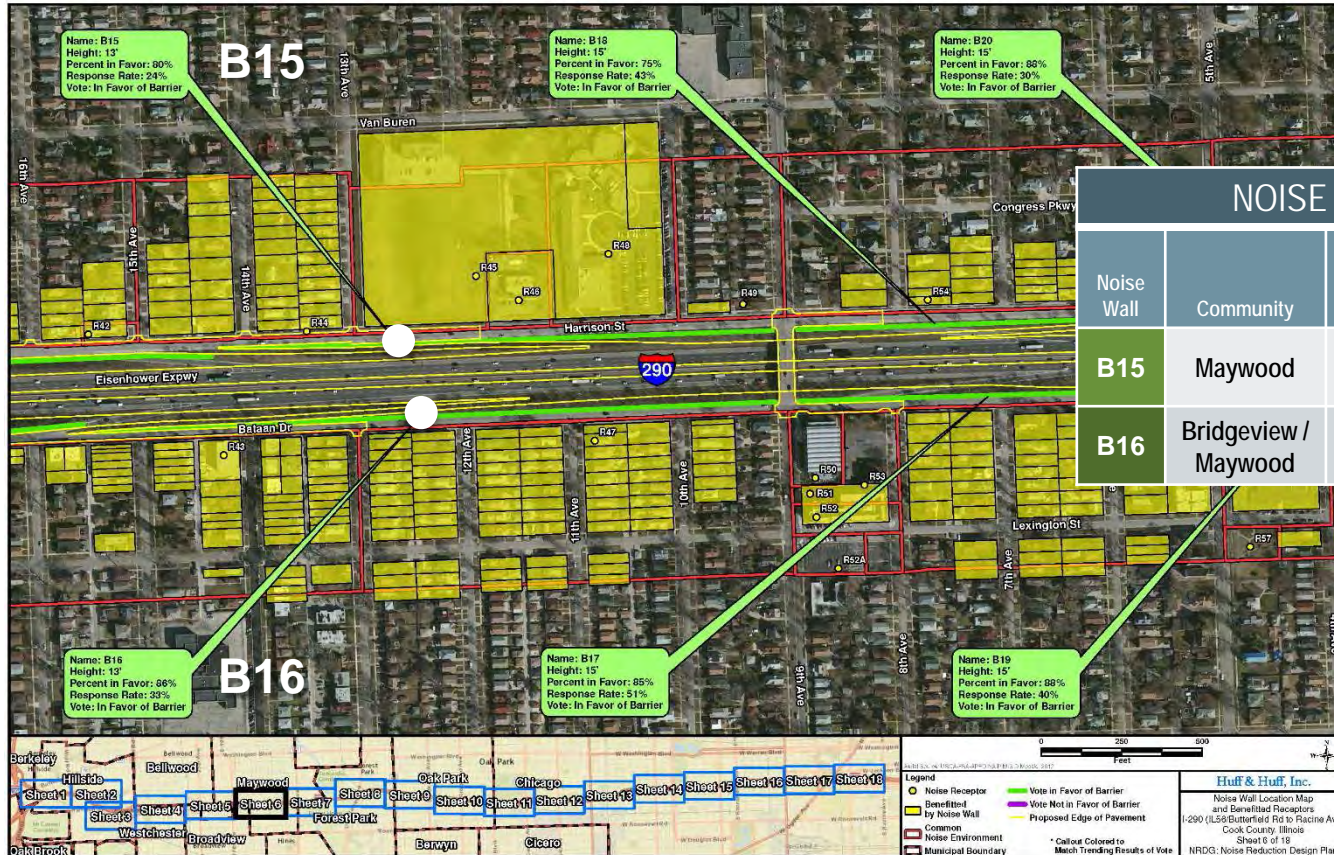
## NOISE WALL VOTING STATUS

Noise Wall	Community	Voting Response Rate	% of Votes in Favor	Voting Results	Wall Recommended for Construction
B13	Maywood	45%	74%	In Favor	Yes
B14	Bellwood / Maywood	41%	88%	In Favor	Yes





# Current Noise Wall Voting Status

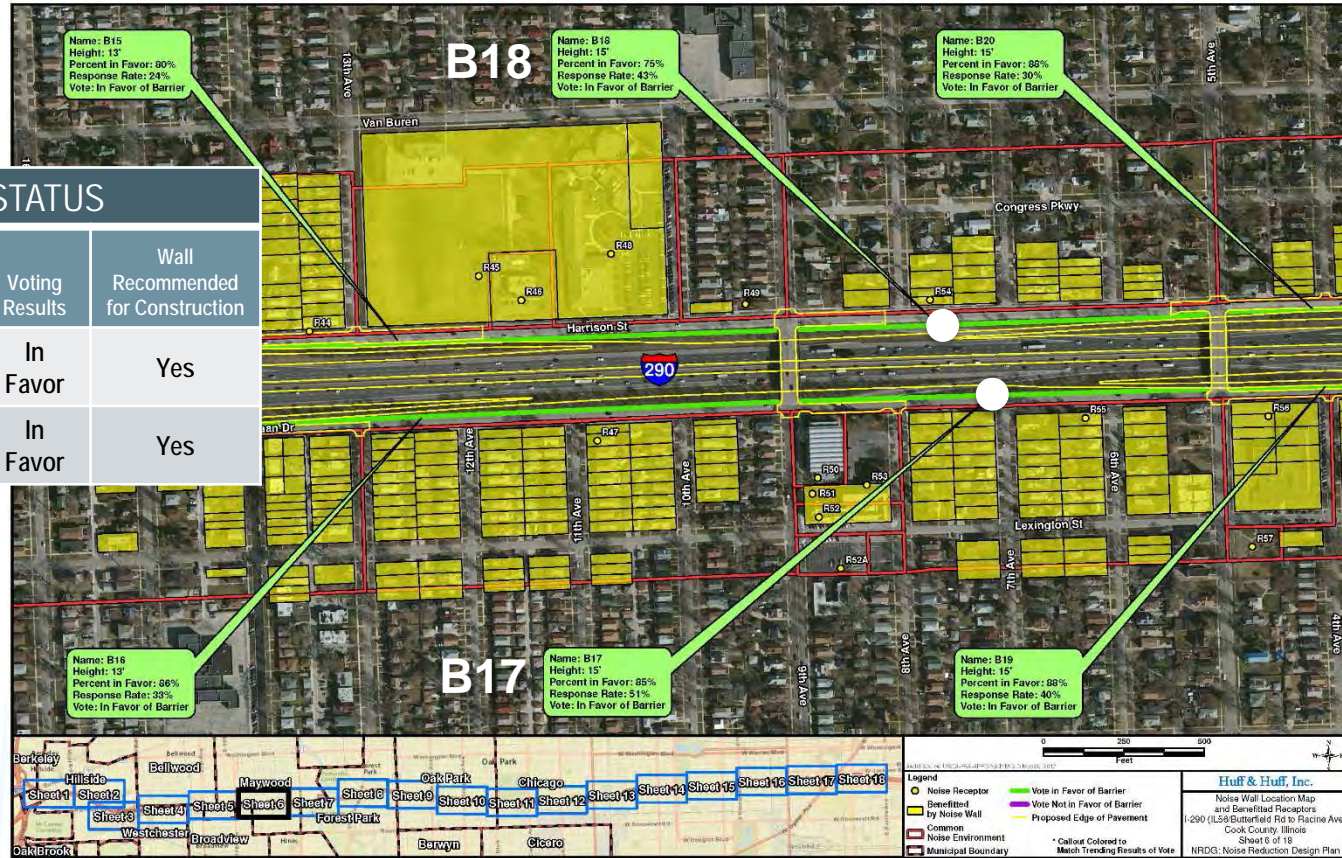




# Current Noise Wall Voting Status

## NOISE WALL VOTING STATUS

Noise Wall	Community	Voting Response Rate	% of Votes in Favor	Voting Results	Wall Recommended for Construction
B17	Maywood	51%	85%	In Favor	Yes
B18	Maywood	43%	75%	In Favor	Yes





# Current Noise Wall Voting Status



NOISE WALL VOTING STATUS					
Noise Wall	Community	Voting Response Rate	% of Votes in Favor	Voting Results	Wall Recommended for Construction
B19	Maywood	40%	88%	In Favor	Yes
B20	Maywood	30%	88%	In Favor	Yes


# Noise Wall Voting Update

- New alternative configuration (#1 & #6)  
**MAY** warrant another voting round
- Further analysis is underway now
- IF another round is warranted communication to specific benefited property owners should begin  
**late August**



Watch for updates: [EisenhowerExpressway.com](http://EisenhowerExpressway.com)

# We Want to Hear from You



**Questions?** Study team members will respond to anonymous questions presented by a moderator. If you have a question, please write it on this card and drop it in the question box. Also, please feel free to speak to one of the Study Team representatives. Thank you for your participation!

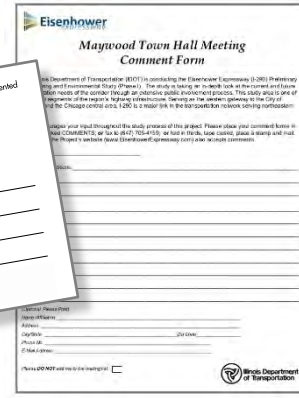
---

---

---

---

---




**Eisenhower**  
Maywood Town Hall Meeting  
Comment Form

Illinois Department of Transportation (IDOT) is planning the Eisenhower Expressway (I-290) Preliminary Engineering and Construction Study (PECS). The study is being an in-depth look at the current and future travel needs of the corridor through an extensive public participation process. The study area is one of the largest of the major highway reconstruction projects in Illinois, covering the 17.5 miles of the Chicago control area, I-290 to a major link in the transportation network serving northeastern Illinois.

As part of your input throughout the study process of this project, please place your comment form in the comment box at the 1001 North Dearborn Street, Suite 1000, Chicago, IL 60610. Use a stamp, place a stamp and mail the project's website (www.illinois.gov/transportation) for more information.

Project Name: \_\_\_\_\_  
Address: \_\_\_\_\_  
City: \_\_\_\_\_  
State: \_\_\_\_\_  
Zip: \_\_\_\_\_  
Phone: \_\_\_\_\_  
E-mail: \_\_\_\_\_

Please do NOT write in the shaded area.



- Question and Answer Session
- Written Comment Forms
- Online Comment Forms at [www.eisenhowerexpressway.com](http://www.eisenhowerexpressway.com)



**Comments received by May 20, 2016**  
will become part of this meetings record.



## Maywood AWG

- Review and consider all comments
- Further discussion of Alts 1 & 6 June 23<sup>rd</sup> AWG meeting
- Hold additional Town Hall meeting late August
- Visit website for updates: [EisenhowerExpressway.com](http://EisenhowerExpressway.com)

## Overall I-290 Study

- DEIS Preparation – Fall 2016
- Public Hearing – Winter 2017

## Study Completion – Summer 2017

- Final design, ROW and construction not funded





*Question & Answer Session*

**Please submit  
your question cards to  
study team members**



**THANK YOU FOR ATTENDING**

