

KEY MAP OF I-290 EISENHOWER EXPRESSWAY

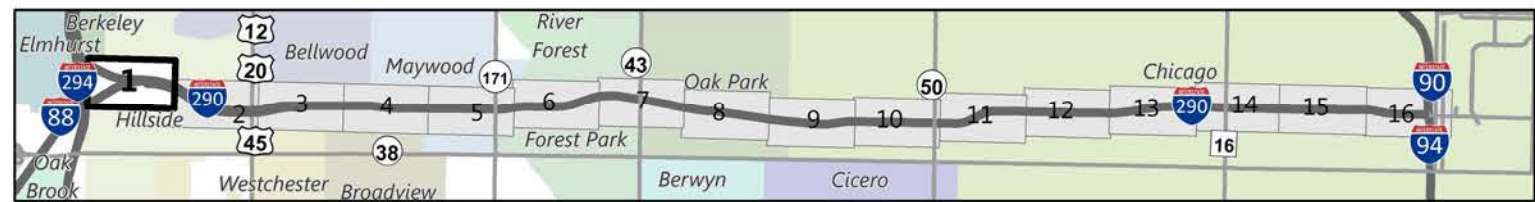
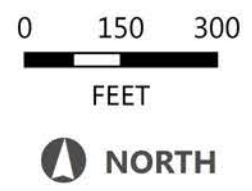
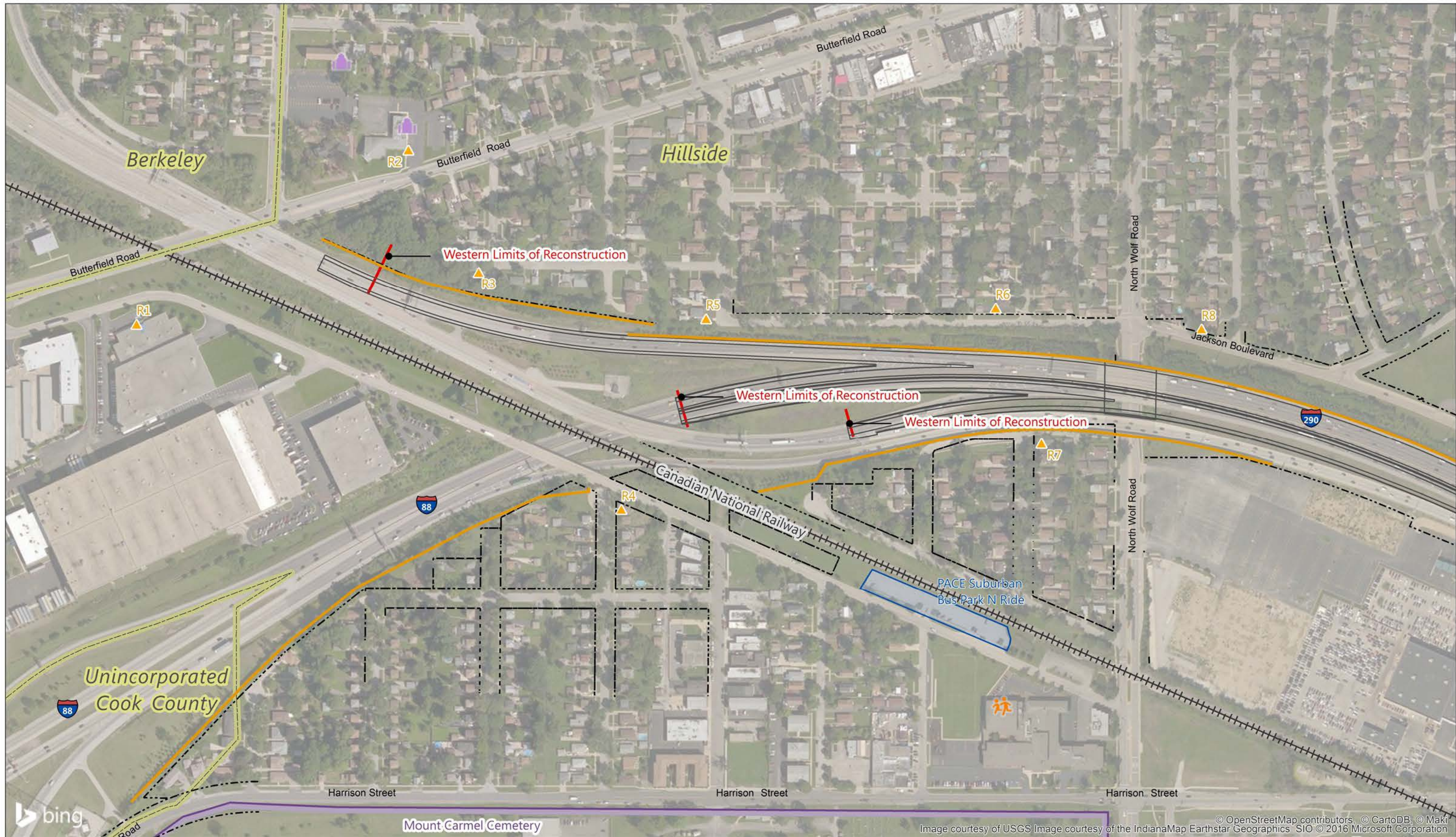


LEGEND

National Register of Historic Places (NRHP)-Listed Historic Property	Fire	River / Creek	Park	Metra Rail
National Historic Landmark Property	Hospital	Watershed Boundary	Park	Metra Rail Station
NRHP-Eligible Property	Library	Floodway	Illinois Prairie Path	CTA Rail
Previously Determined NRHP-Eligible or Pending NRHP-Listing Property	Place of Worship	Floodplain	Cemetery	CTA Rail Station
Representative Noise Receptors	Police	Existing Right-of-Way	Cemetery	Railroad
Existing Noise Barrier	Post Office	Proposed Right-of-Way	Cemetery	Park and Ride
Proposed Noise Barrier Likely to be Implemented	School	Proposed Easement		
Municipal Boundary	Village Hall			

SECTION 3.0 MAP SET: LEGEND
Draft Environmental Impact Statement

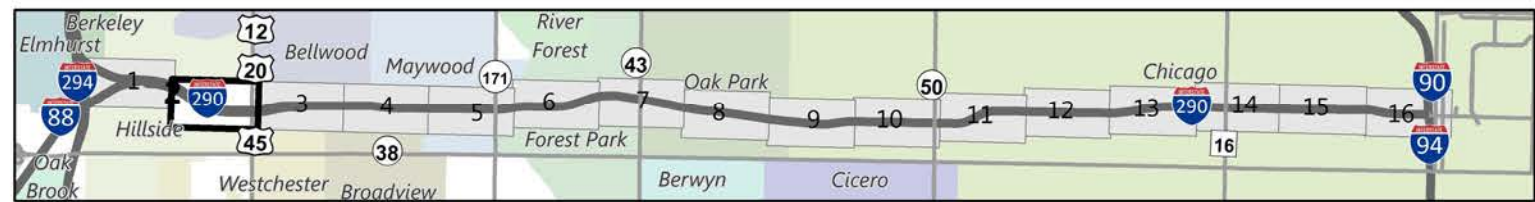
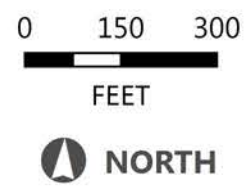




LEGEND
 Municipal Boundary
 Full legend on first page of map set

SECTION 3.0 MAP SET
Draft Environmental Impact Statement

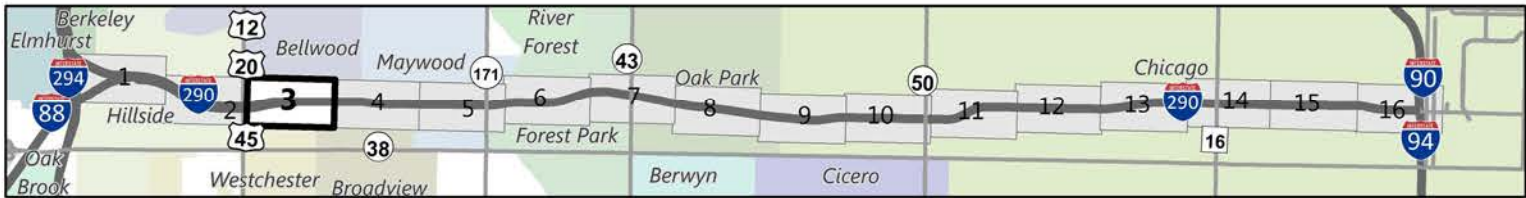
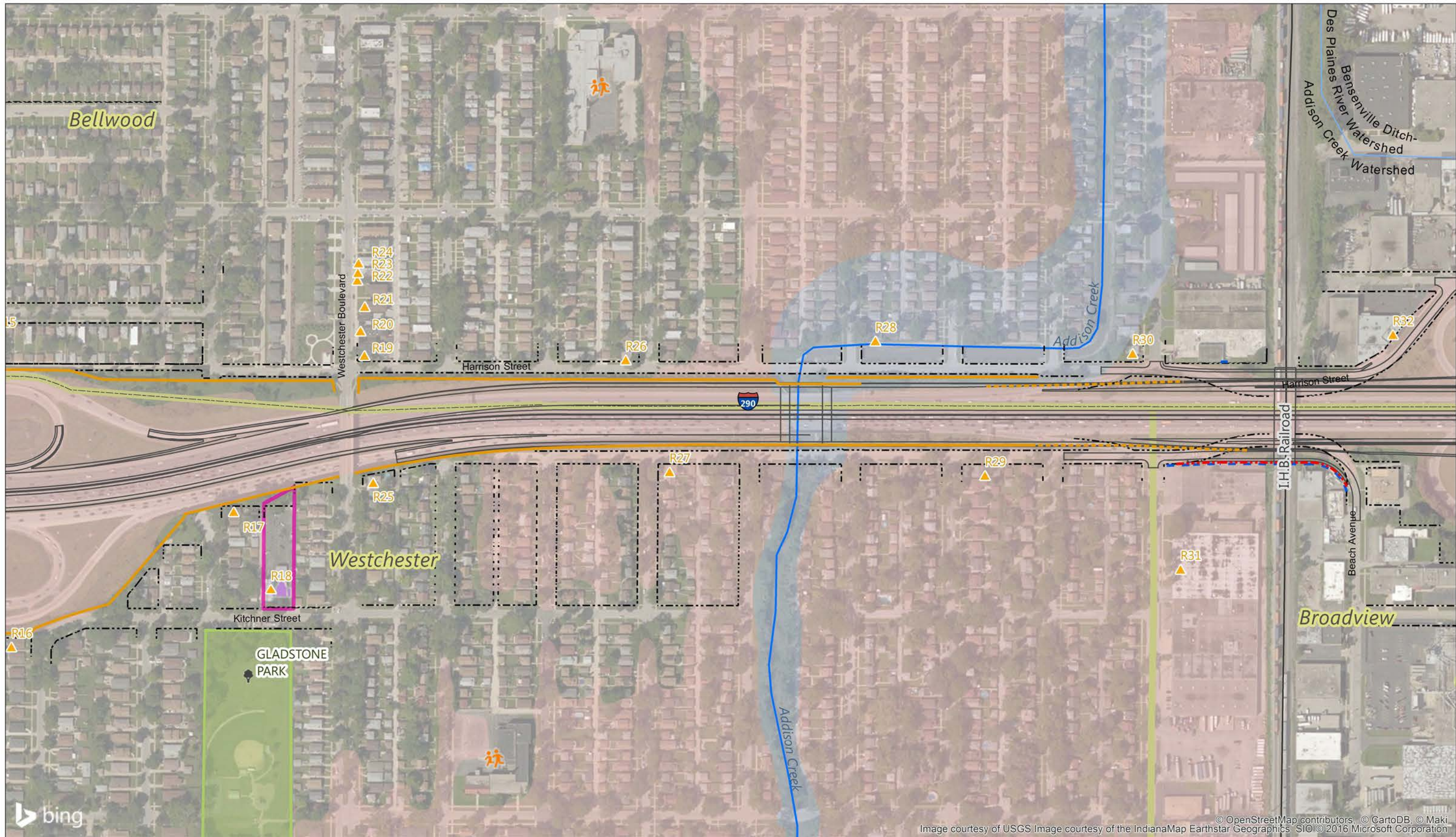


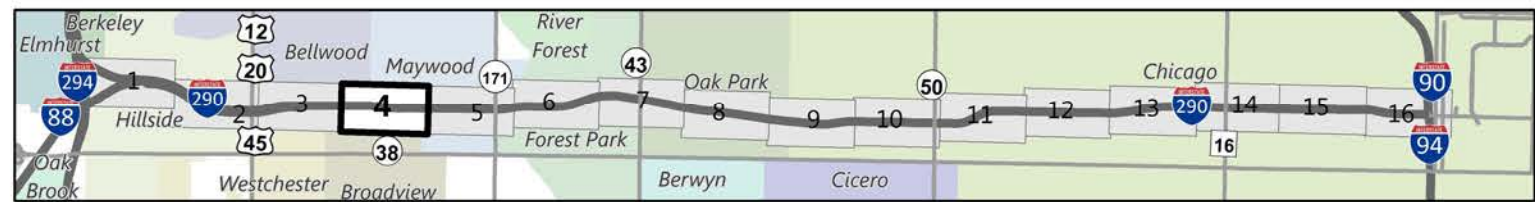
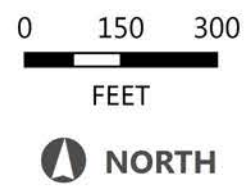
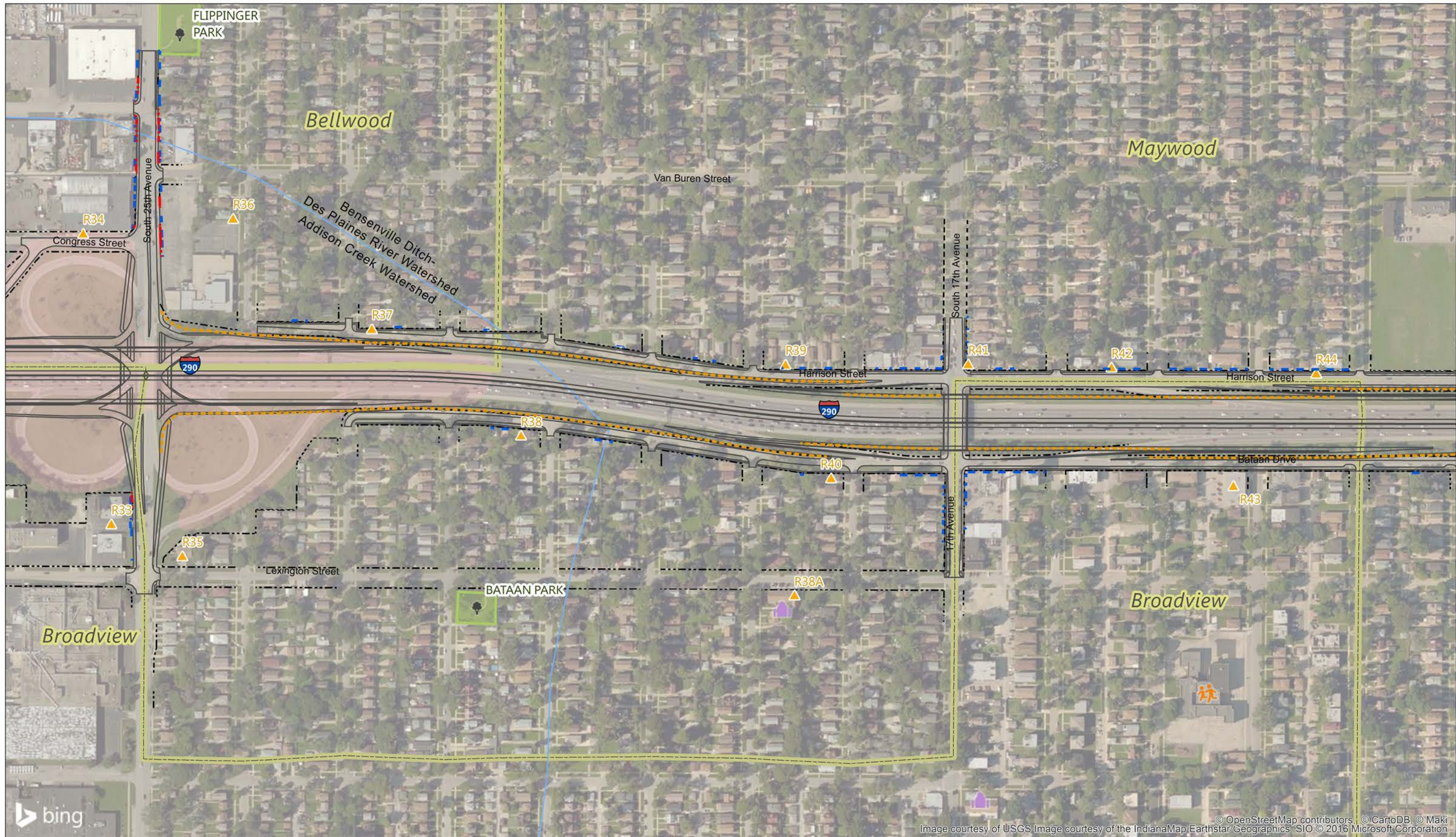


LEGEND
 Municipal Boundary
 Full legend on first page of map set

SECTION 3.0 MAP SET
Draft Environmental Impact Statement



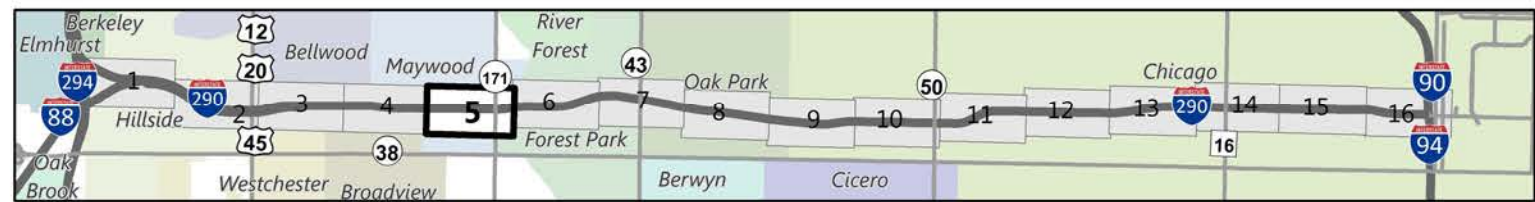
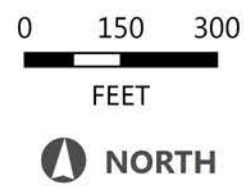
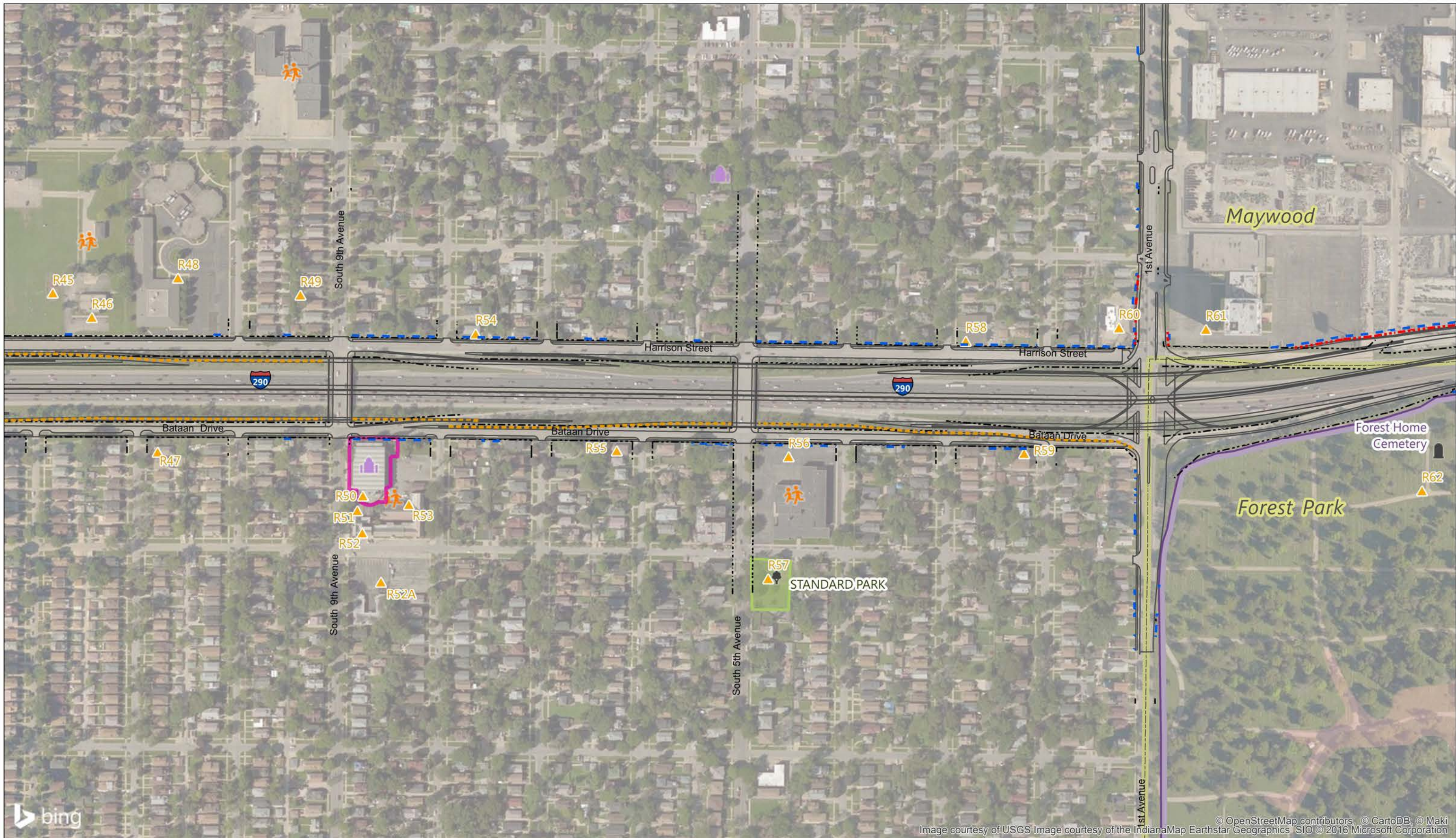




LEGEND
 Municipal Boundary
 Full legend on first page of map set

SECTION 3.0 MAP SET
Draft Environmental Impact Statement

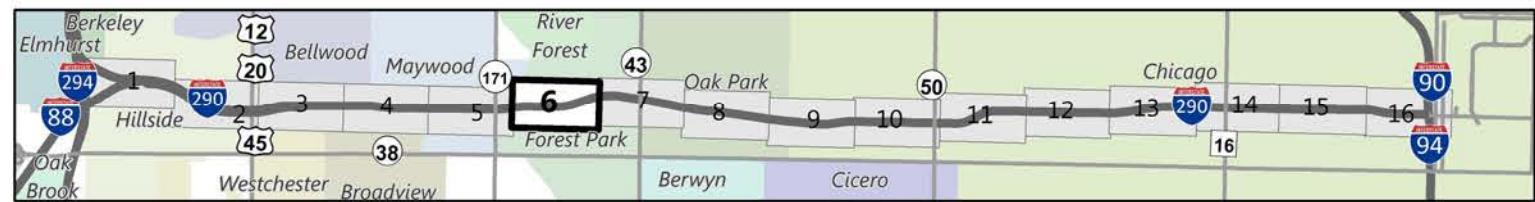
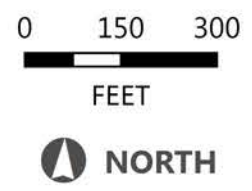
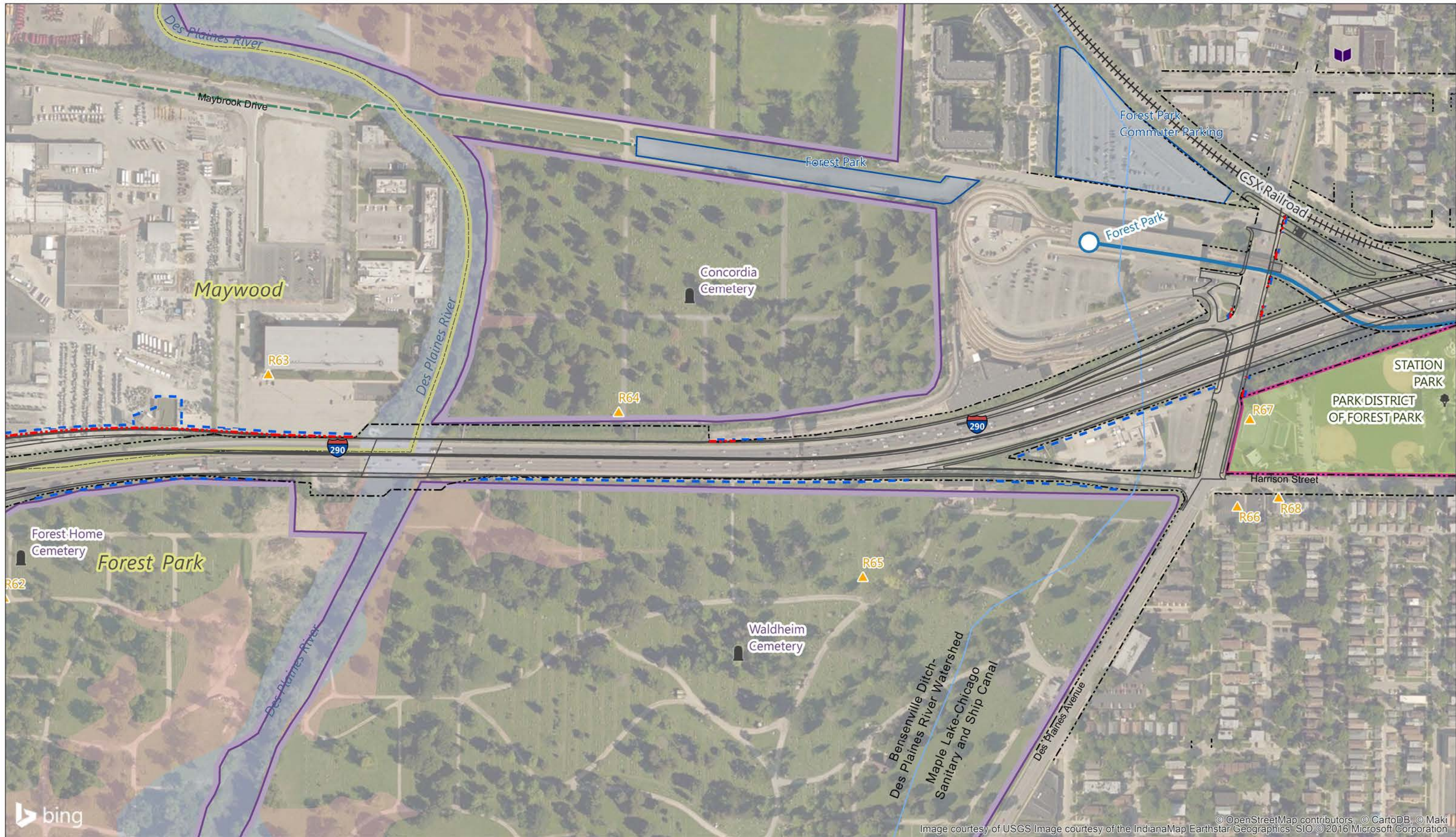




LEGEND
 Municipal Boundary
 Full legend on first page of map set

SECTION 3.0 MAP SET
Draft Environmental Impact Statement

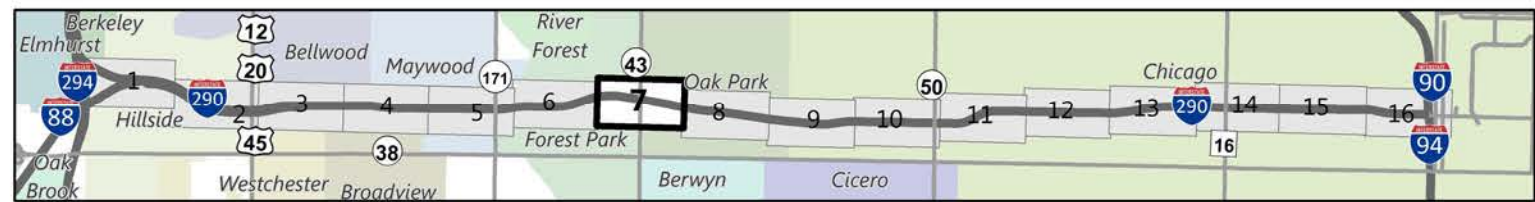
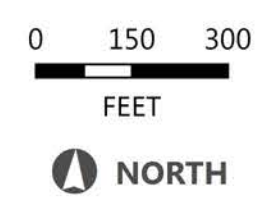
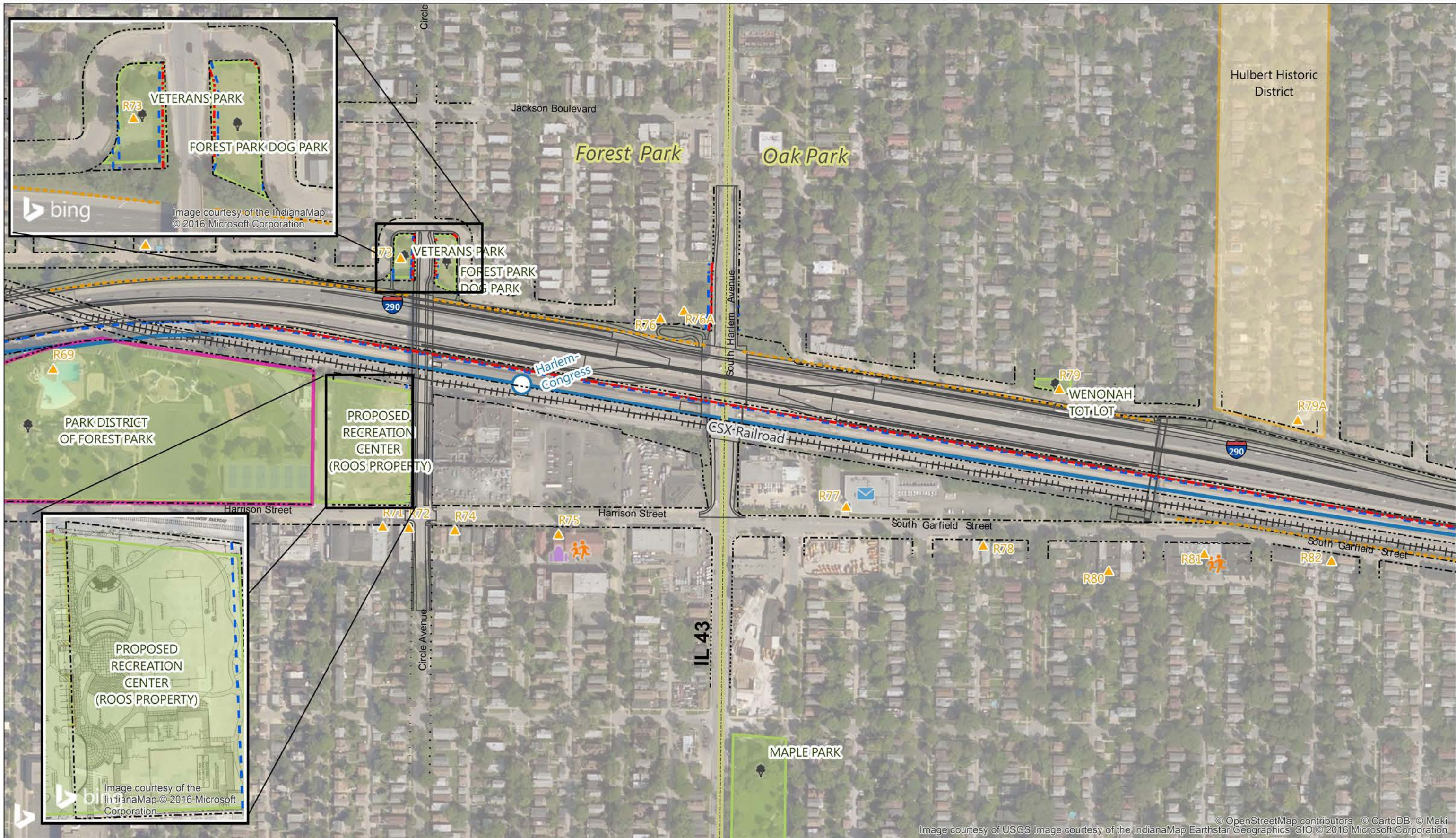




LEGEND
 ~~~~~ Municipal Boundary  
 Full legend on first page of map set

**SECTION 3.0 MAP SET**  
**Draft Environmental Impact Statement**





**LEGEND**  
 Municipal Boundary  
 Full legend on first page of map set

**SECTION 3.0 MAP SET**  
**Draft Environmental Impact Statement**





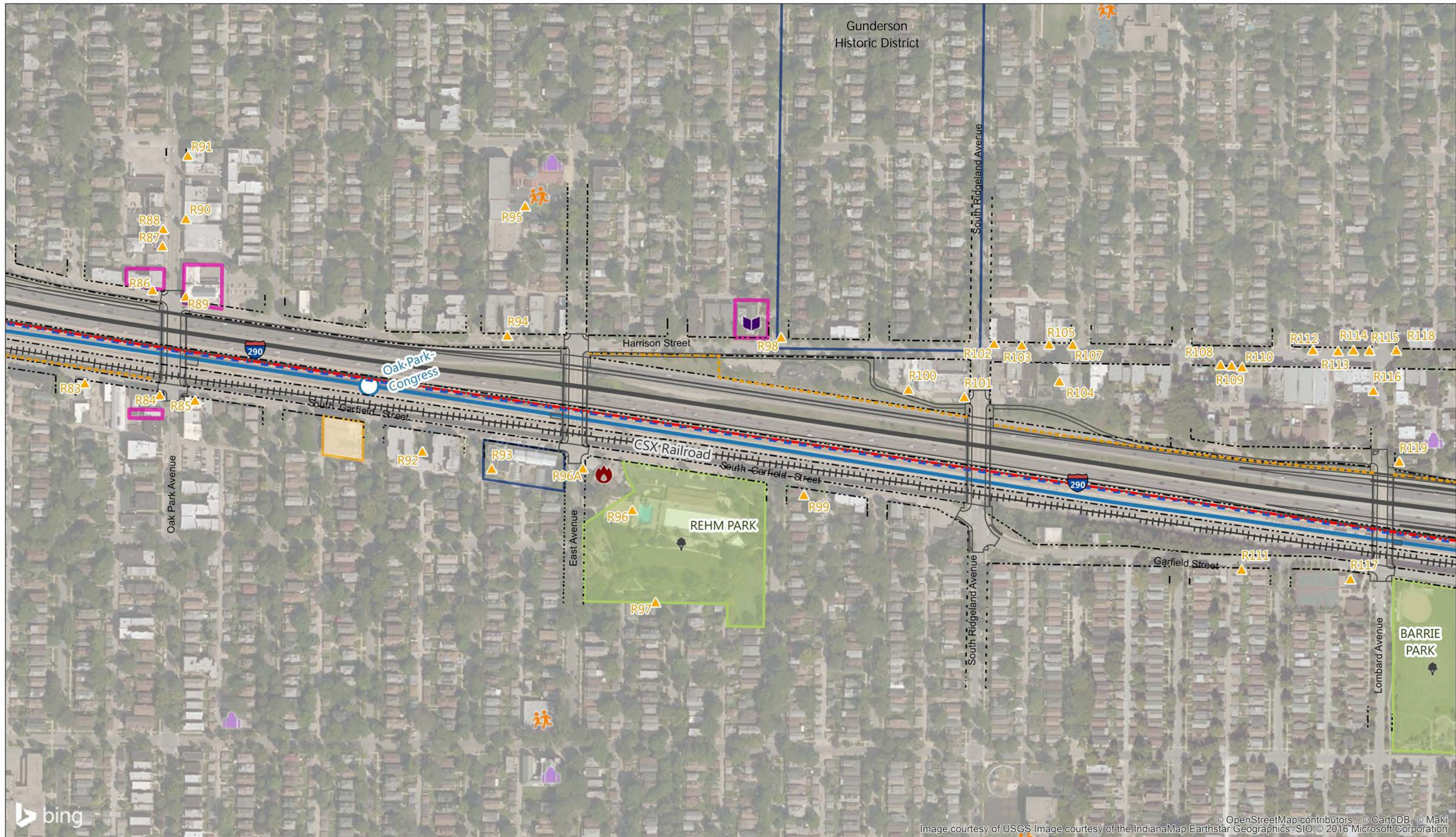
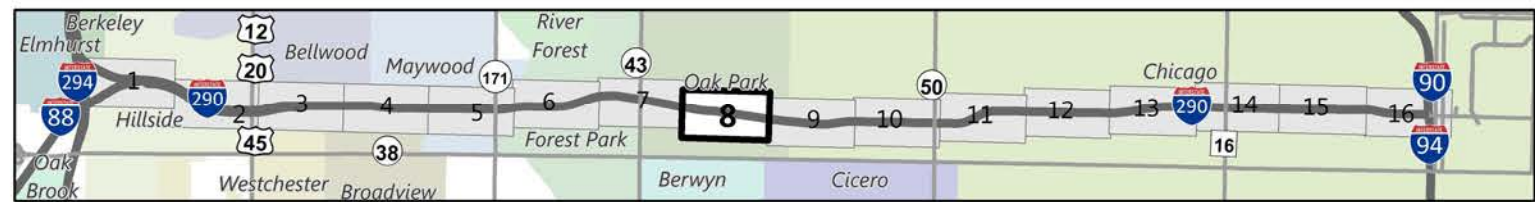
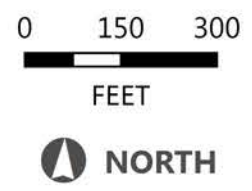


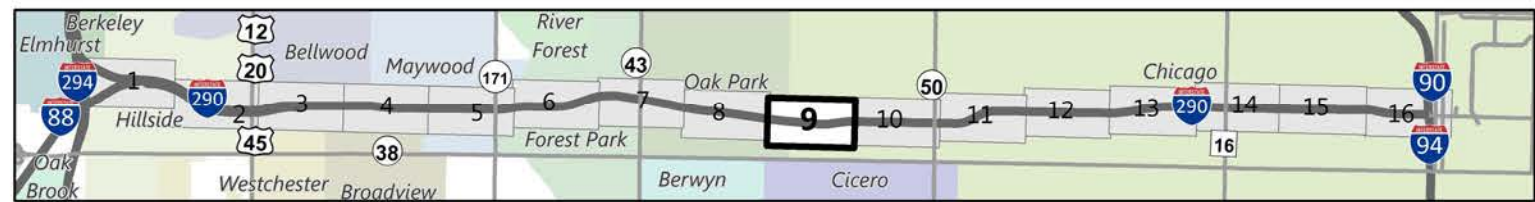
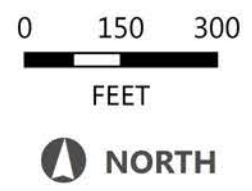
Image courtesy of USGS Image courtesy of the IndianaMap Earthstar Geographics SIO © 2016 Microsoft Corporation



**LEGEND**  
 Municipal Boundary  
 Full legend on first page of map set

**SECTION 3.0 MAP SET**  
**Draft Environmental Impact Statement**

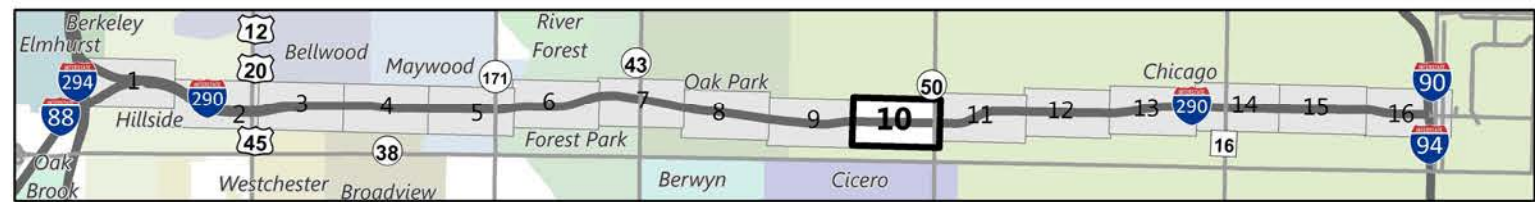
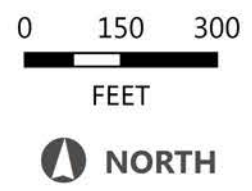
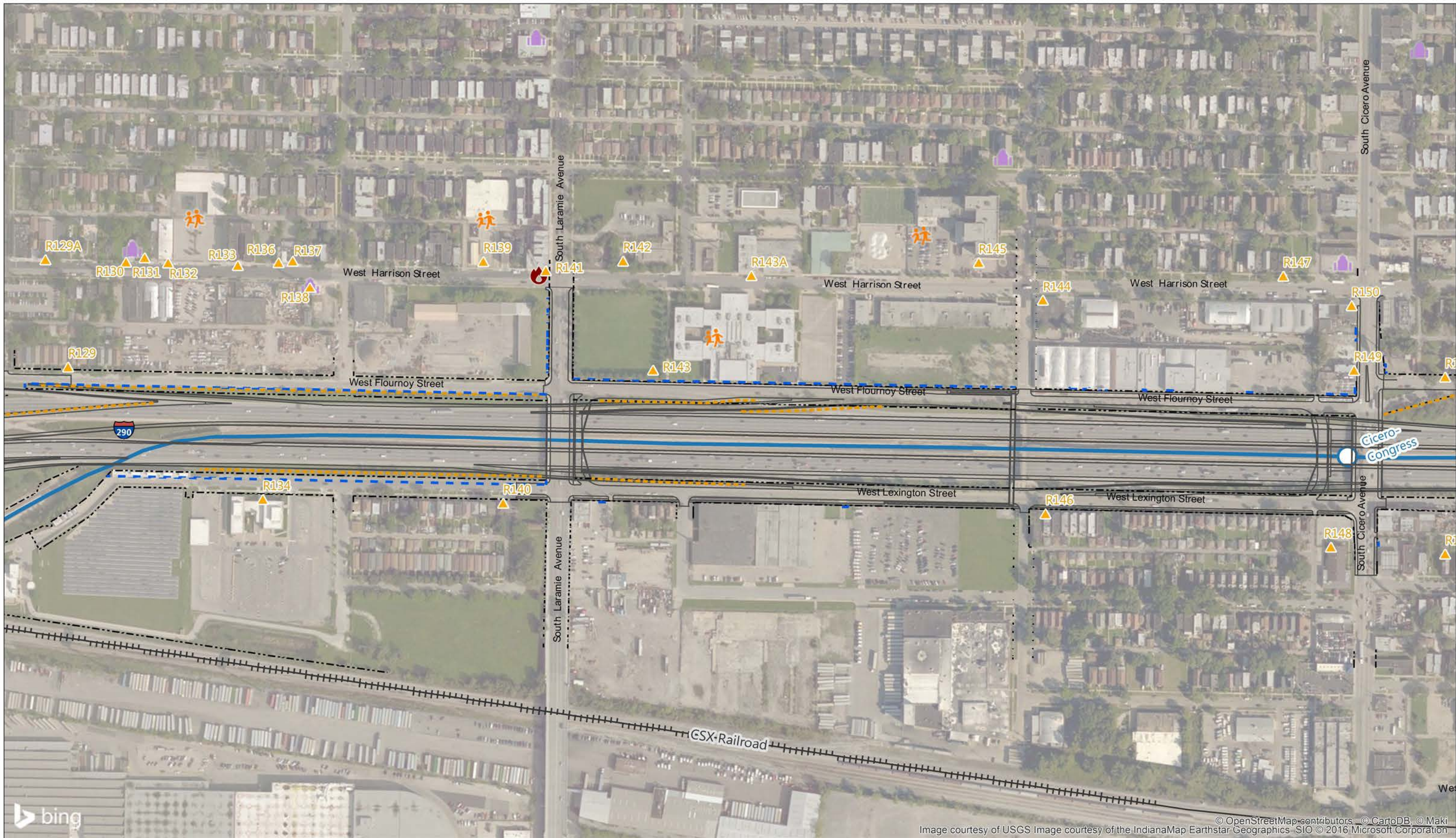


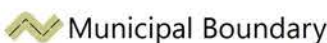


**LEGEND**  
 Municipal Boundary  
 Full legend on first page of map set

**SECTION 3.0 MAP SET**  
**Draft Environmental Impact Statement**

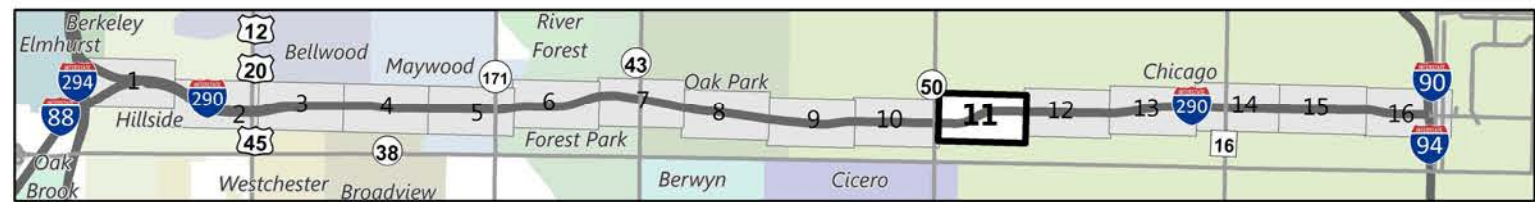
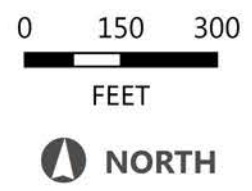




**LEGEND**  
 Municipal Boundary  
 Full legend on first page of map set

**SECTION 3.0 MAP SET**  
**Draft Environmental Impact Statement**

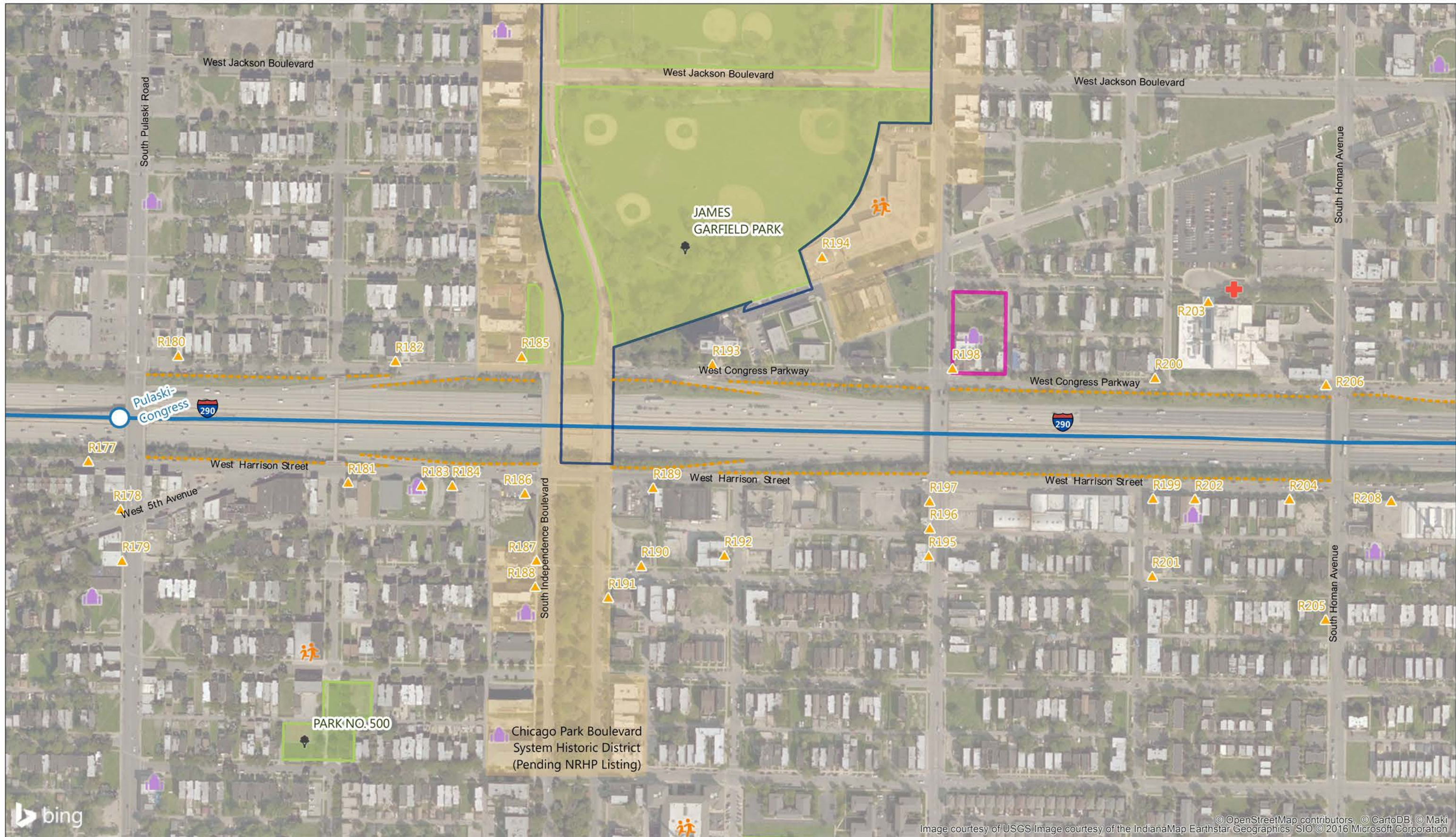




**LEGEND**  
 Municipal Boundary  
 Full legend on first page of map set

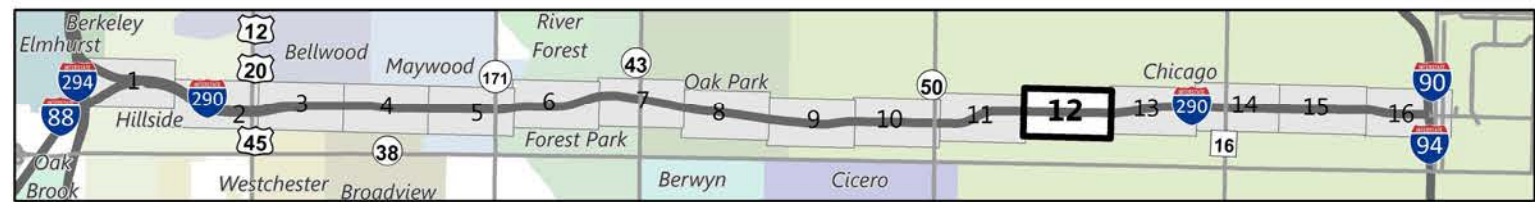
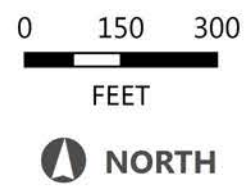
**SECTION 3.0 MAP SET**  
**Draft Environmental Impact Statement**





bing

Image courtesy of USGS Image courtesy of the IndianaMap Earthstar Geographics SIO © 2016 Microsoft Corporation



**LEGEND**  
 Municipal Boundary  
 Full legend on first page of map set

**SECTION 3.0 MAP SET**  
**Draft Environmental Impact Statement**



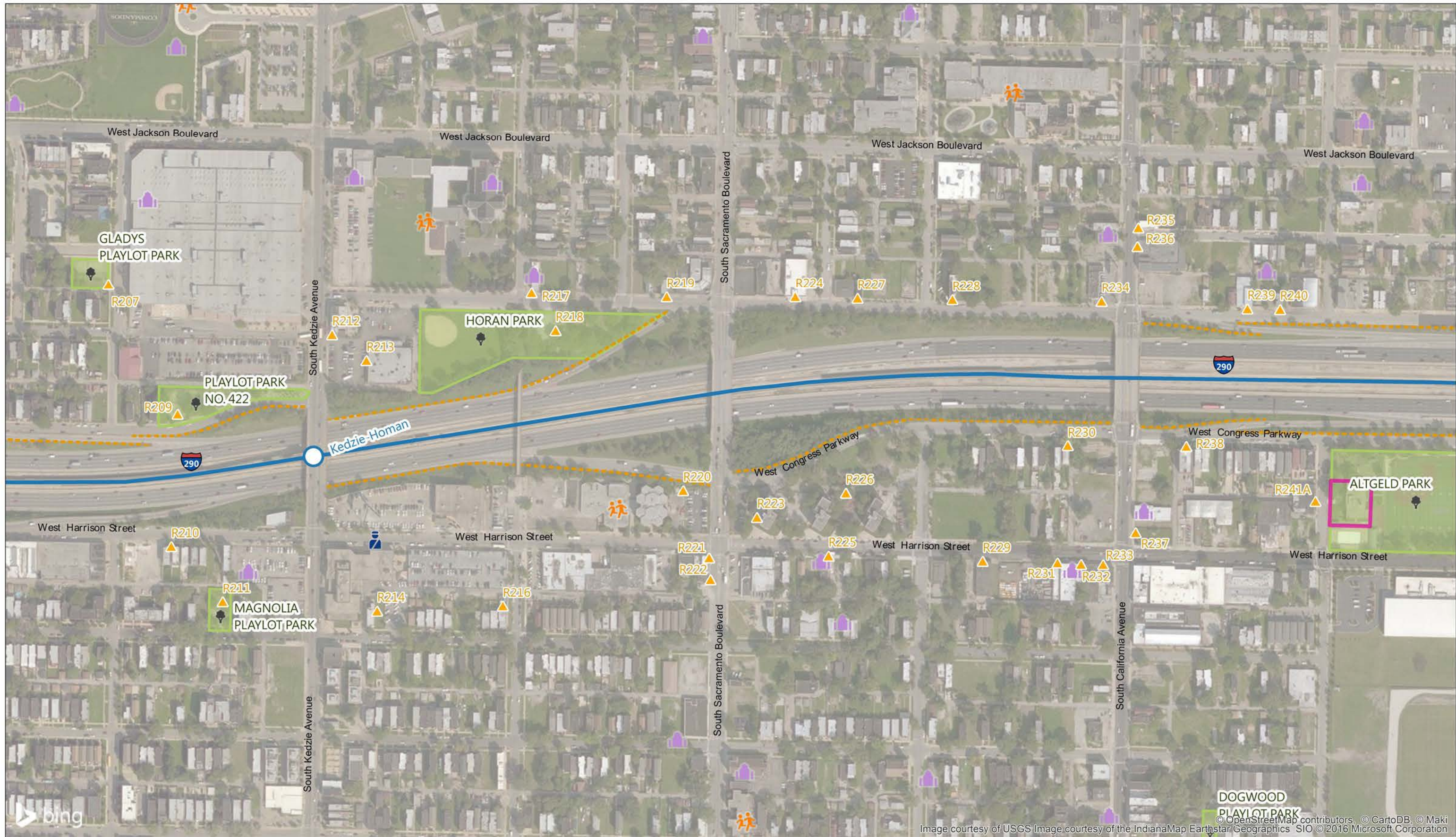
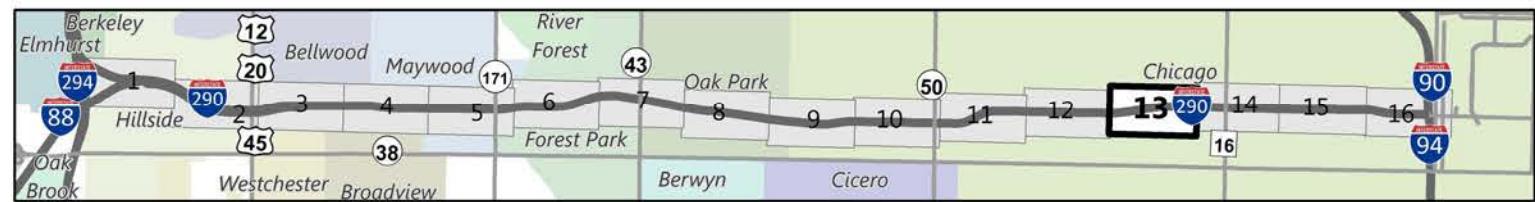
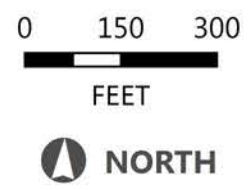



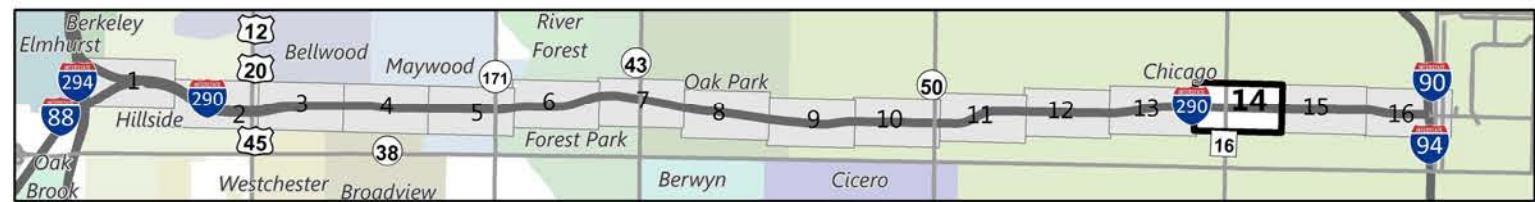
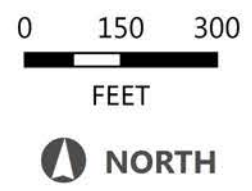
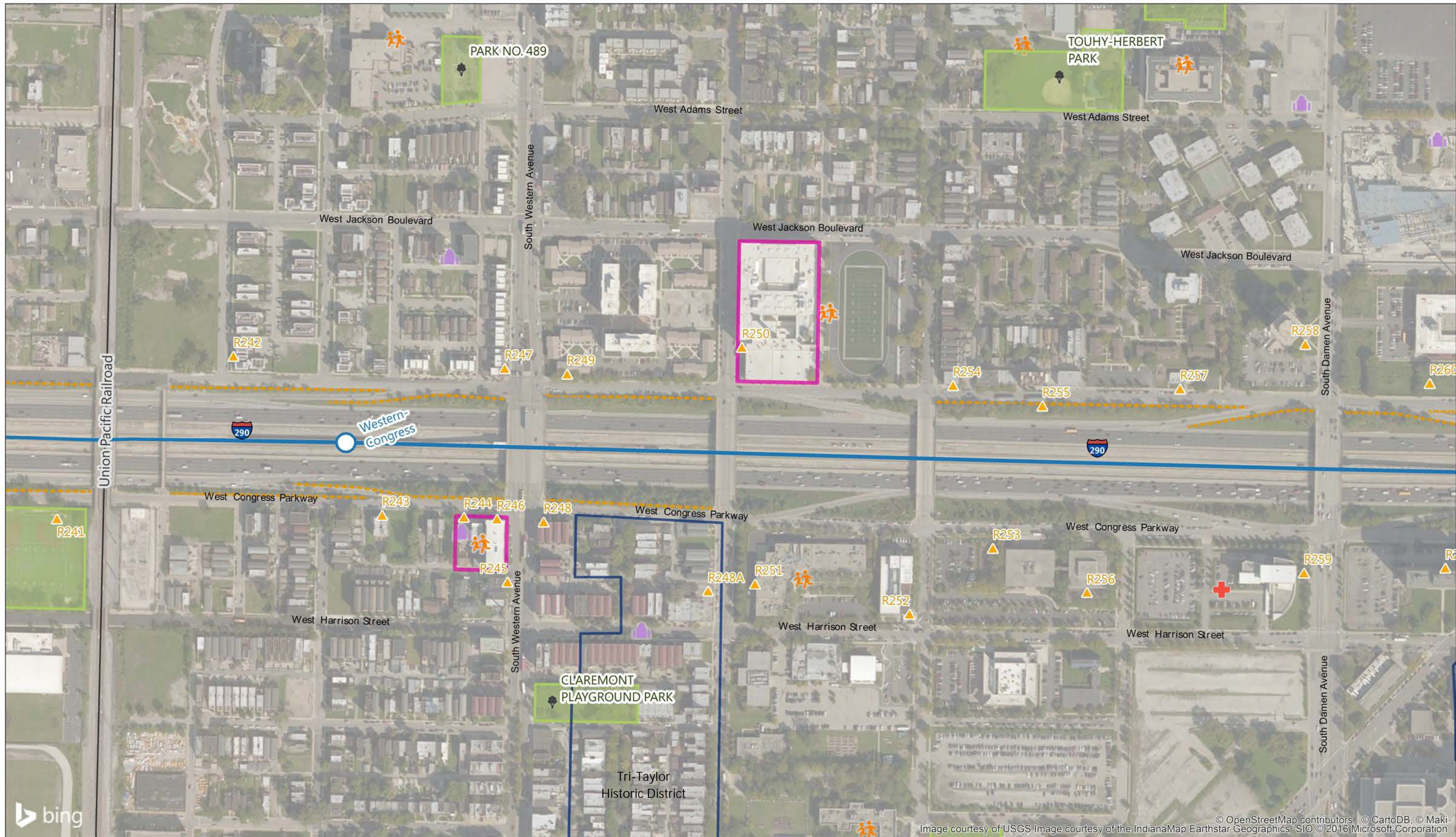
Image courtesy of USGS Image courtesy of the IndianaMap Earthstar Geographics SIO © 2016 Microsoft Corporation



**LEGEND**  
 Municipal Boundary  
 Full legend on first page of map set

**SECTION 3.0 MAP SET**  
**Draft Environmental Impact Statement**

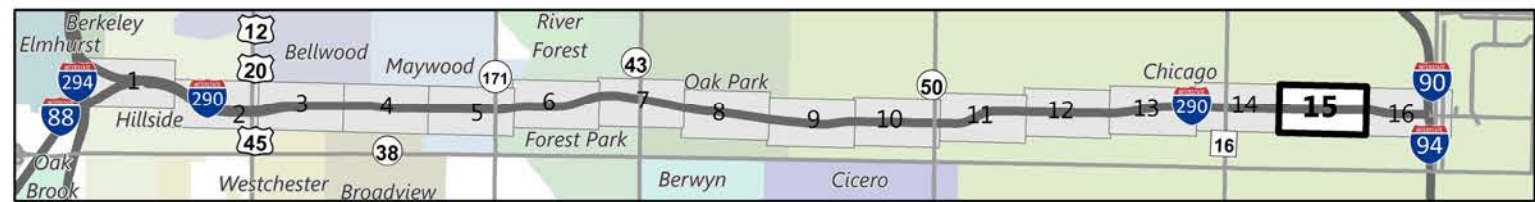
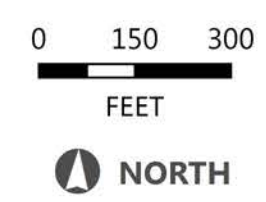
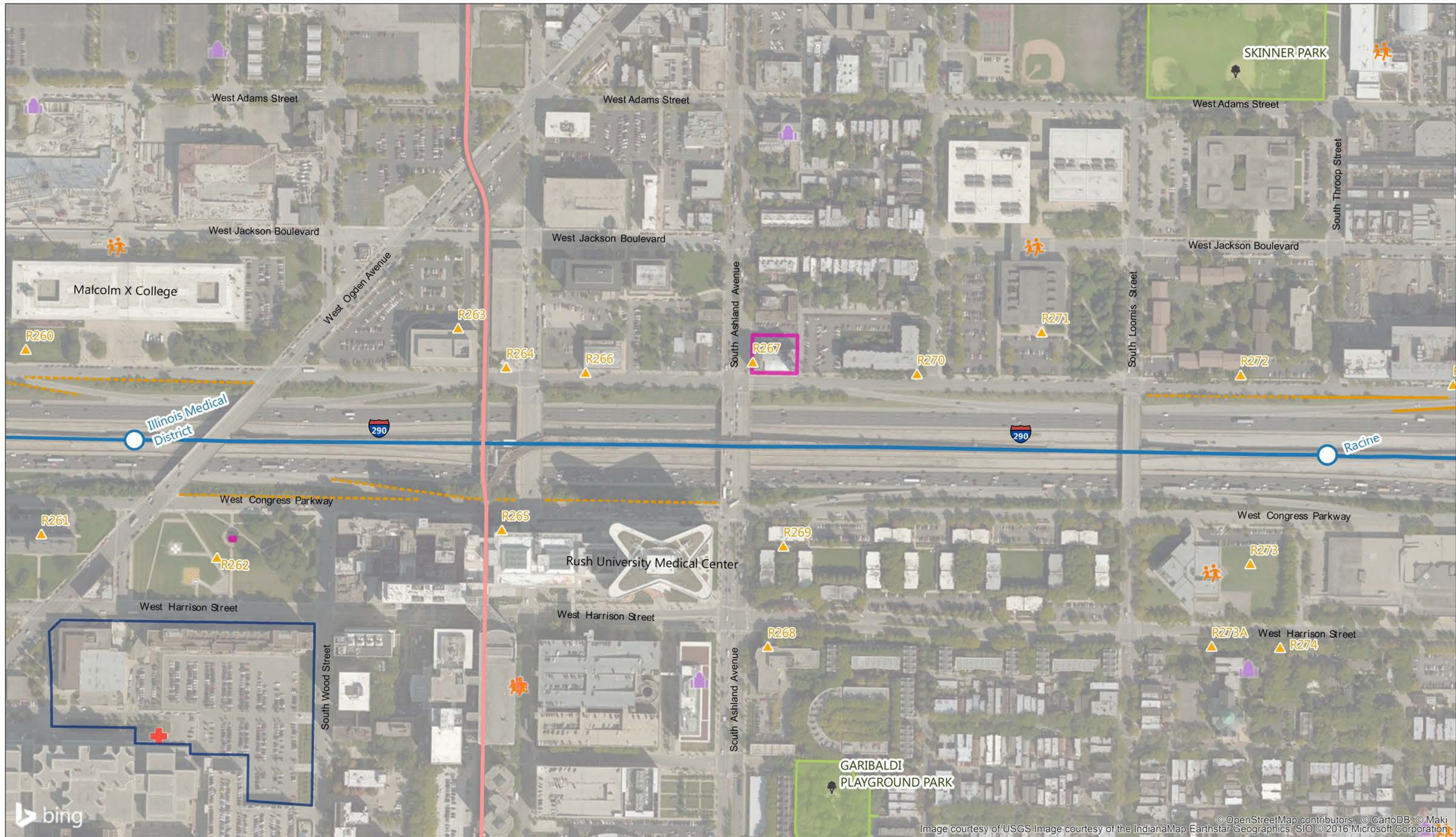




**LEGEND**  
 Municipal Boundary  
 Full legend on first page of map set

**SECTION 3.0 MAP SET**  
**Draft Environmental Impact Statement**



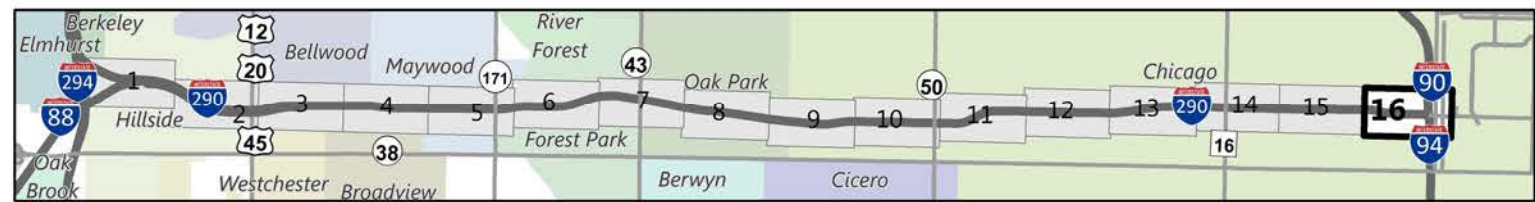
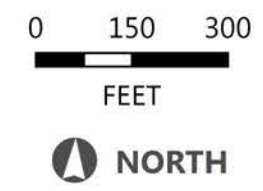


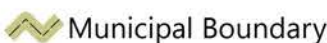
**LEGEND**  
 Municipal Boundary  
 Full legend on first page of map set

**SECTION 3.0 MAP SET**  
**Draft Environmental Impact Statement**







**LEGEND**  
 Municipal Boundary  
 Full legend on first page of map set

**SECTION 3.0 MAP SET**  
**Draft Environmental Impact Statement**

