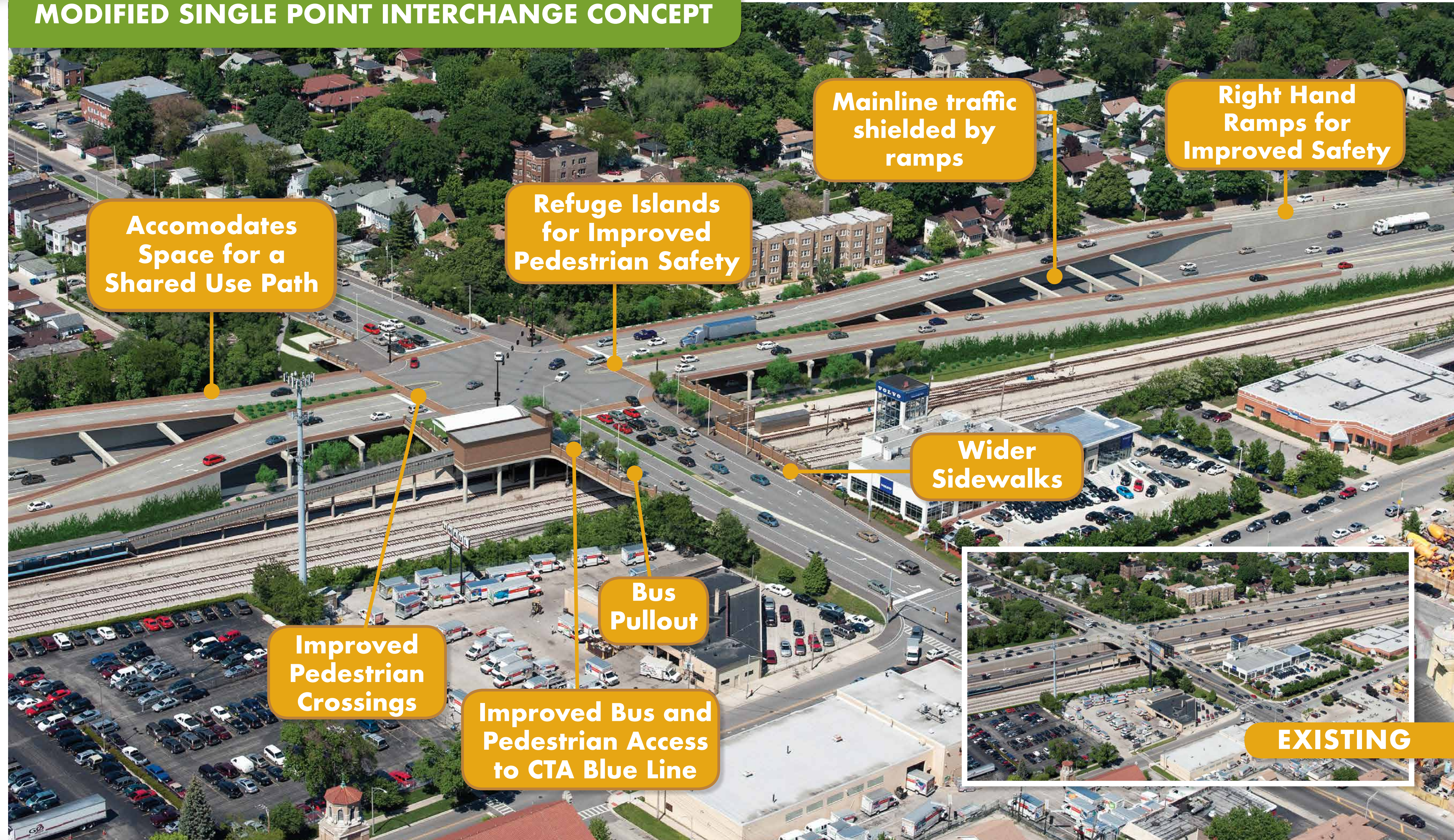


Harlem Avenue Preliminary Concept

MODIFIED SINGLE POINT INTERCHANGE CONCEPT



Harlem Avenue Preliminary Concept

MODIFIED SINGLE POINT INTERCHANGE CONCEPT



EXISTING

Austin Boulevard Preliminary Concept



MODIFIED SINGLE POINT INTERCHANGE CONCEPT



Shared Use Path Connection to Columbus Park Trail

Right Hand Ramps for Improved Safety

Mainline traffic shielded by ramps

No ROW Impact to Columbus Park

Potential to Add Space to Columbus Park

Refuge Islands for Improved Pedestrian Safety

Accommodates Space for a Shared Use Path

Wider Sidewalks

Transit Plaza



EXISTING

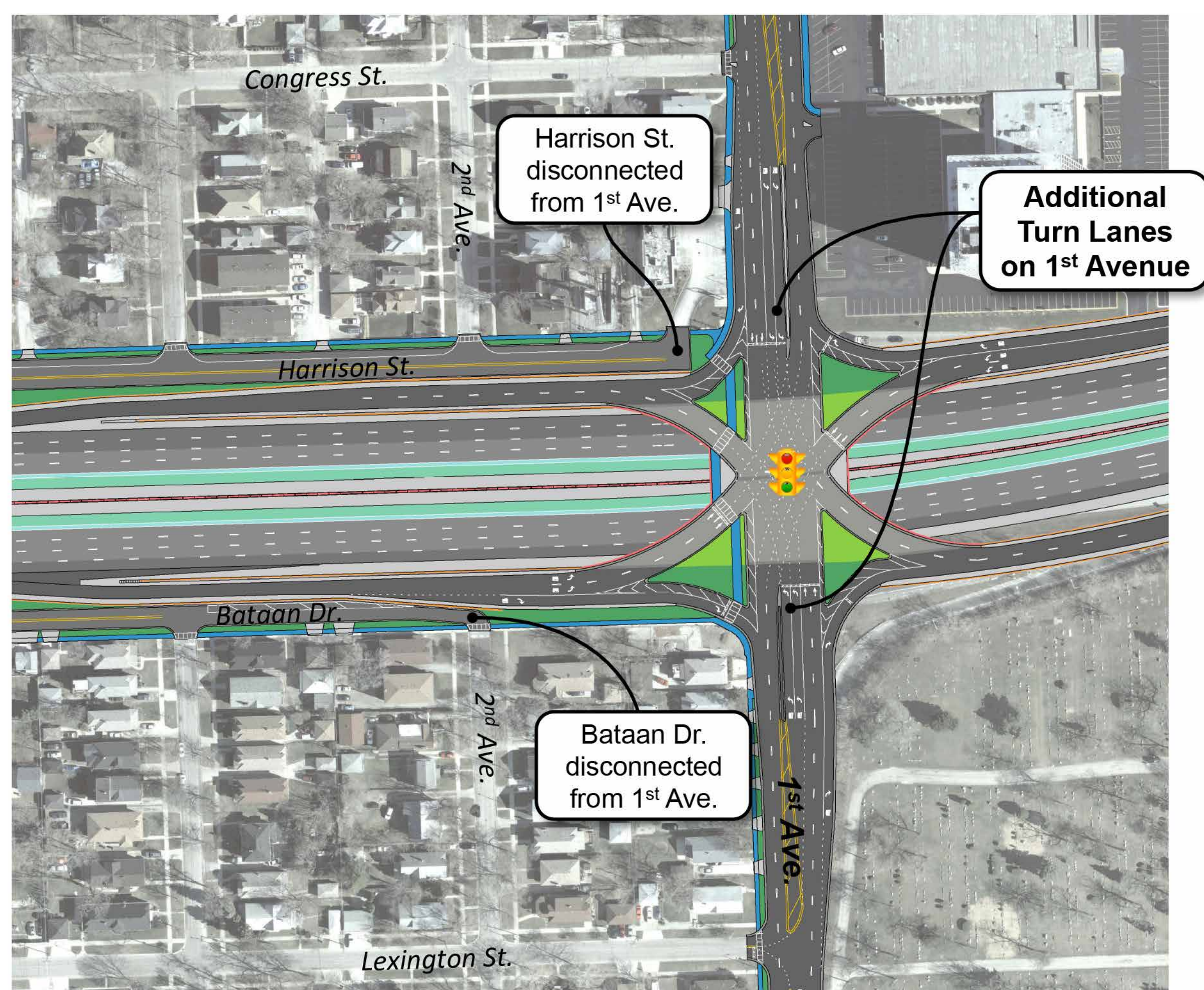
Improved Pedestrian Crossings

Bus Pullout

Improved Bus and Pedestrian Access to CTA Blue Line



1st Avenue Interchange



At the 1st Avenue interchange, the existing design causes long signal wait times and extensive vehicle stacking. 90% of vehicles accessing the frontage roads to or from I-290 is cut through traffic. Proposed improvements will enhance community access and improve local travel times.

1st Avenue interchange – proposed conditions

- *Disconnect the frontage roads at Harrison/Bataan*
- *Improves safety, capacity and operations*
- *Additional turn lanes on 1st Avenue*
- *Reduces vehicles stacking along 1st Avenue*
- *Character of frontage roads become local*