

Aerial Source: USDA-FSA-APFO NAIP MrSID Mosaic, 2012

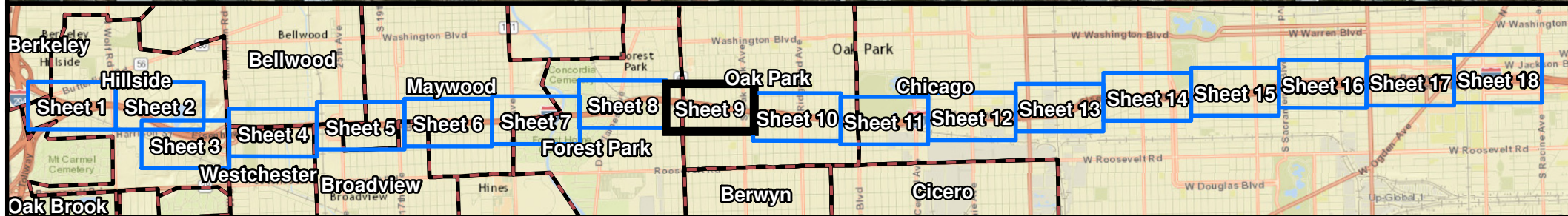
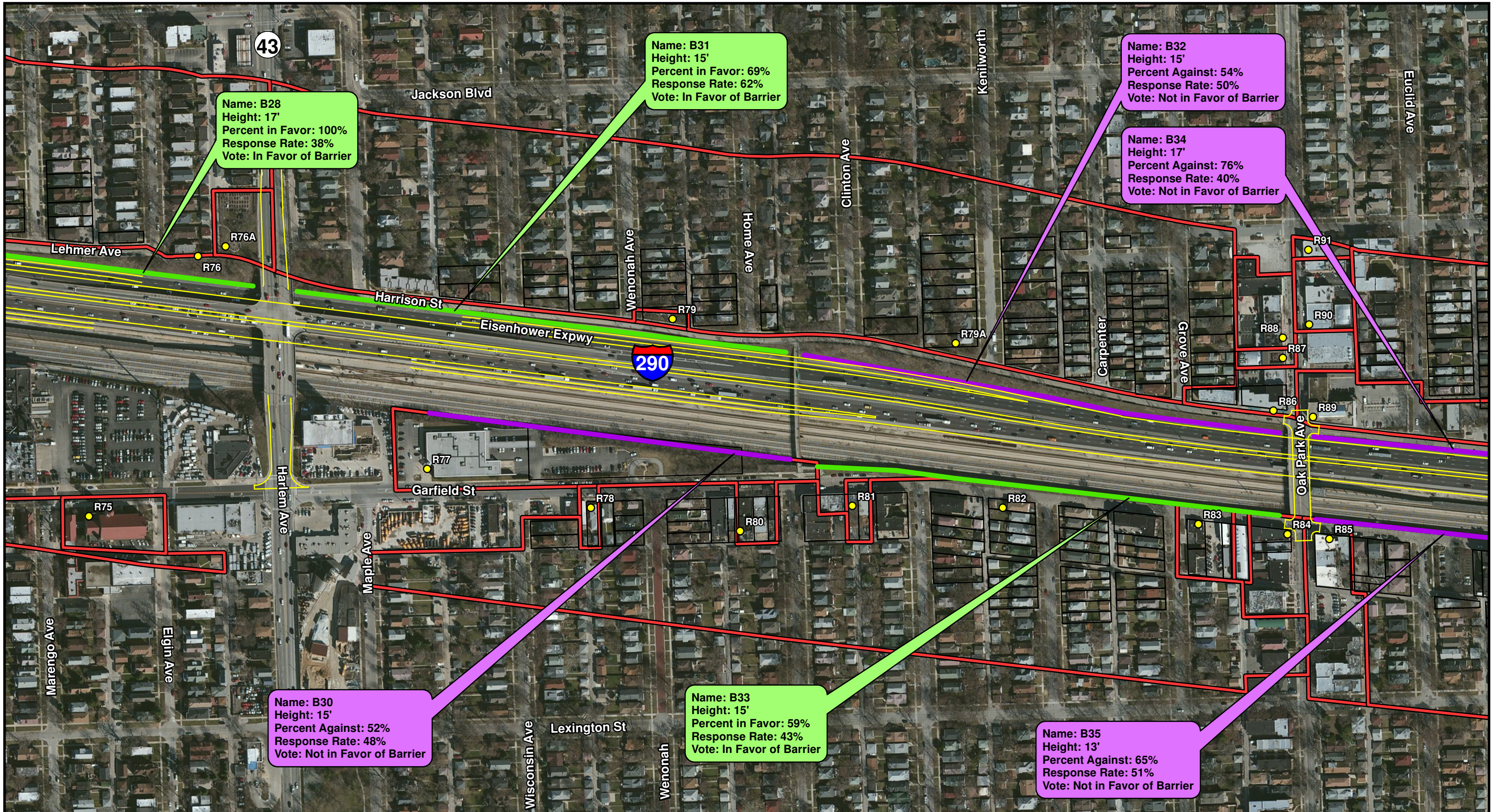
**Legend**

- Noise Receptor
- Common Noise Environment
- Municipal Boundary
- Noise Barrier Likely to be Implemented
- Noise Barrier Not Likely to be Implemented
- Proposed Edge of Pavement

\* Callout Colored to Match Trending Results of Vote

**Huff & Huff, Inc.**

Figure 3 - Noise Barriers Recommended for Construction  
 I-290 (IL56/Butterfield Rd to Racine Ave)  
 Cook County, Illinois  
 Sheet 8 of 18  
 NRDG: Noise Reduction Design Plan



Aerial Source: USDA-FSA-APFO NAIP MrSID Mosaic, 2012

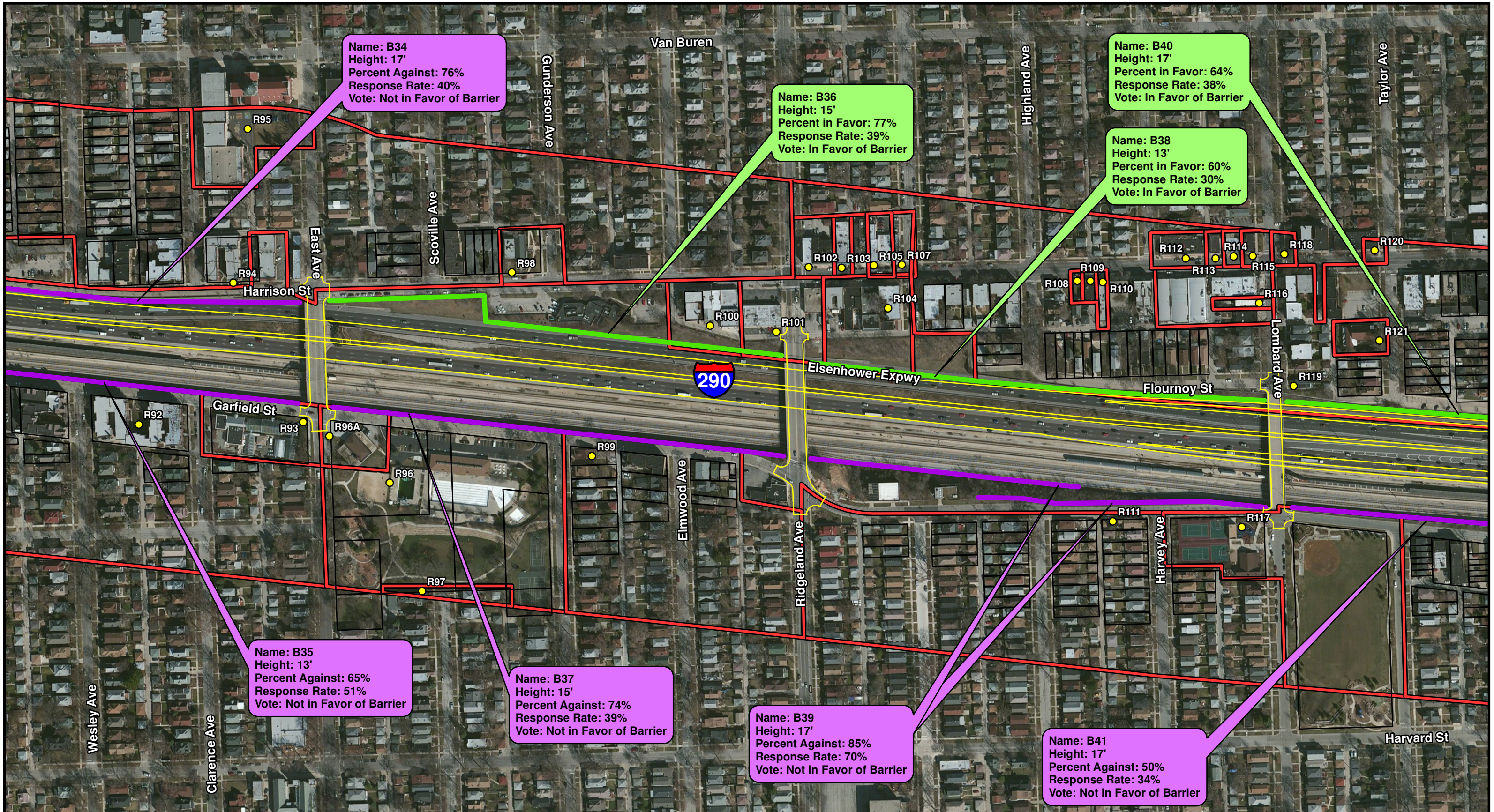
**Legend**

- Noise Receptor
- Common Noise Environment
- Municipal Boundary
- Noise Barrier Likely to be Implemented
- Noise Barrier Not Likely to be Implemented
- Proposed Edge of Pavement

\* Callout Colored to Match Trending Results of Vote

**Huff & Huff, Inc.**

Figure 3 - Noise Barriers Recommended for Construction I-290 (IL56/Butterfield Rd to Racine Ave) Cook County, Illinois Sheet 9 of 18 NRDG: Noise Reduction Design Plan



Name: B34  
 Height: 17'  
 Percent Against: 76%  
 Response Rate: 40%  
 Vote: Not in Favor of Barrier

Name: B36  
 Height: 15'  
 Percent in Favor: 77%  
 Response Rate: 39%  
 Vote: In Favor of Barrier

Name: B40  
 Height: 17'  
 Percent in Favor: 64%  
 Response Rate: 38%  
 Vote: In Favor of Barrier

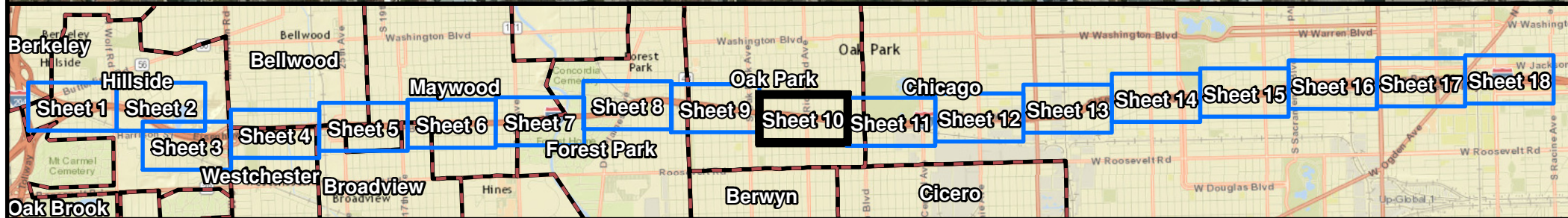
Name: B38  
 Height: 13'  
 Percent in Favor: 60%  
 Response Rate: 30%  
 Vote: In Favor of Barrier

Name: B35  
 Height: 13'  
 Percent Against: 65%  
 Response Rate: 51%  
 Vote: Not in Favor of Barrier

Name: B37  
 Height: 15'  
 Percent Against: 74%  
 Response Rate: 39%  
 Vote: Not in Favor of Barrier

Name: B39  
 Height: 17'  
 Percent Against: 85%  
 Response Rate: 70%  
 Vote: Not in Favor of Barrier

Name: B41  
 Height: 17'  
 Percent Against: 50%  
 Response Rate: 34%  
 Vote: Not in Favor of Barrier



Aerial Source: USDA-FSA-APFO NAIP MrSID Mosaic, 2012

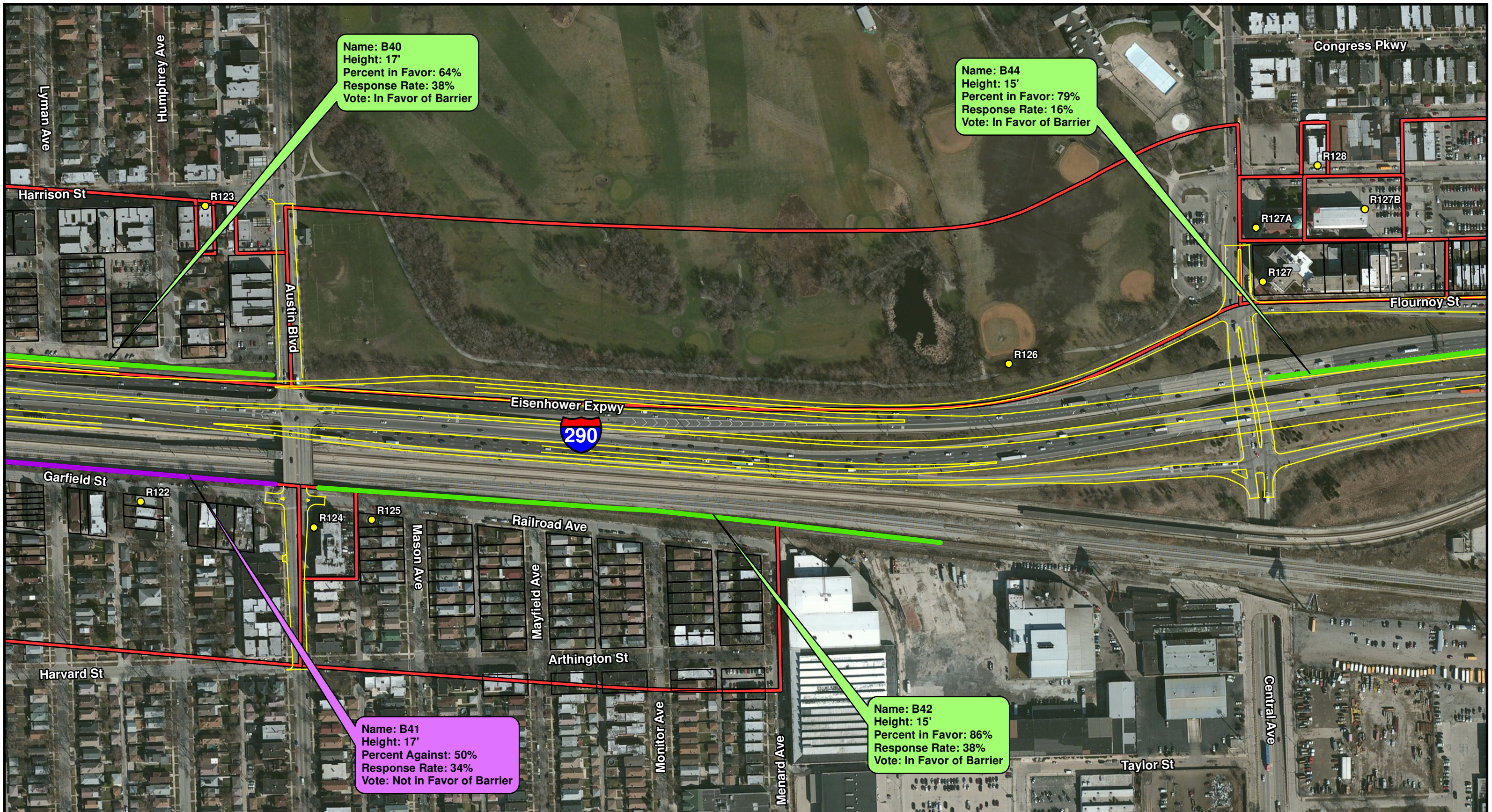
Legend

- Noise Receptor
- Common Noise Environment
- Municipal Boundary
- Noise Barrier Likely to be Implemented
- Noise Barrier Not Likely to be Implemented
- Proposed Edge of Pavement

\* Callout Colored to Match Trending Results of Vote

**Huff & Huff, Inc.**

Figure 3 - Noise Barriers Recommended for Construction I-290 (IL56/Butterfield Rd to Racine Ave) Cook County, Illinois Sheet 10 of 18 NRDG: Noise Reduction Design Plan

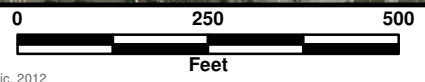
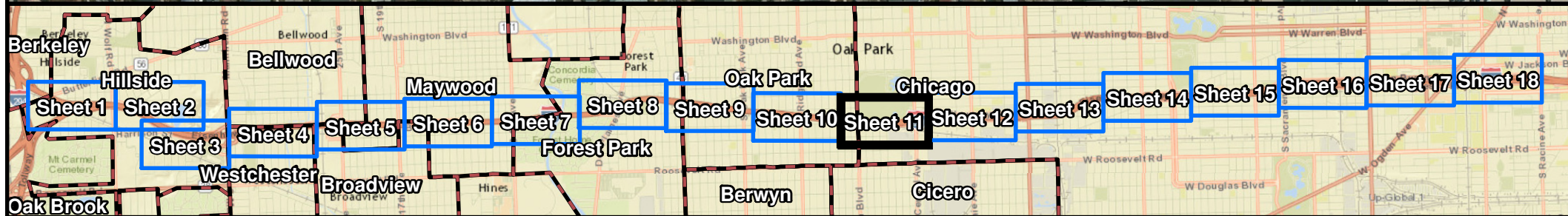


Name: B40  
 Height: 17'  
 Percent in Favor: 64%  
 Response Rate: 38%  
 Vote: In Favor of Barrier

Name: B44  
 Height: 15'  
 Percent in Favor: 79%  
 Response Rate: 16%  
 Vote: In Favor of Barrier

Name: B41  
 Height: 17'  
 Percent Against: 50%  
 Response Rate: 34%  
 Vote: Not in Favor of Barrier

Name: B42  
 Height: 15'  
 Percent in Favor: 86%  
 Response Rate: 38%  
 Vote: In Favor of Barrier



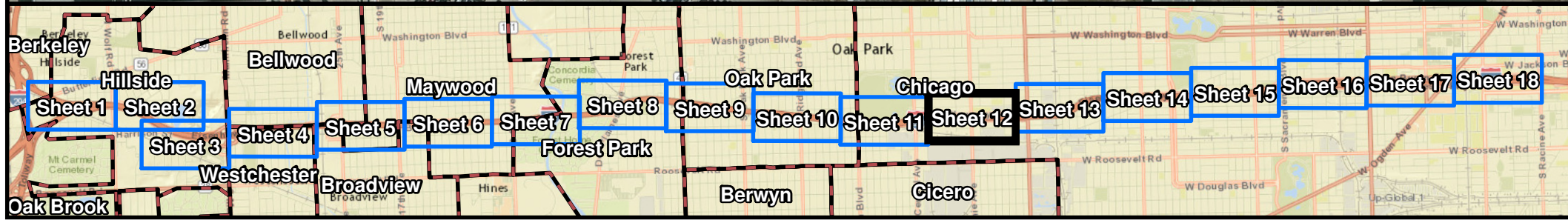
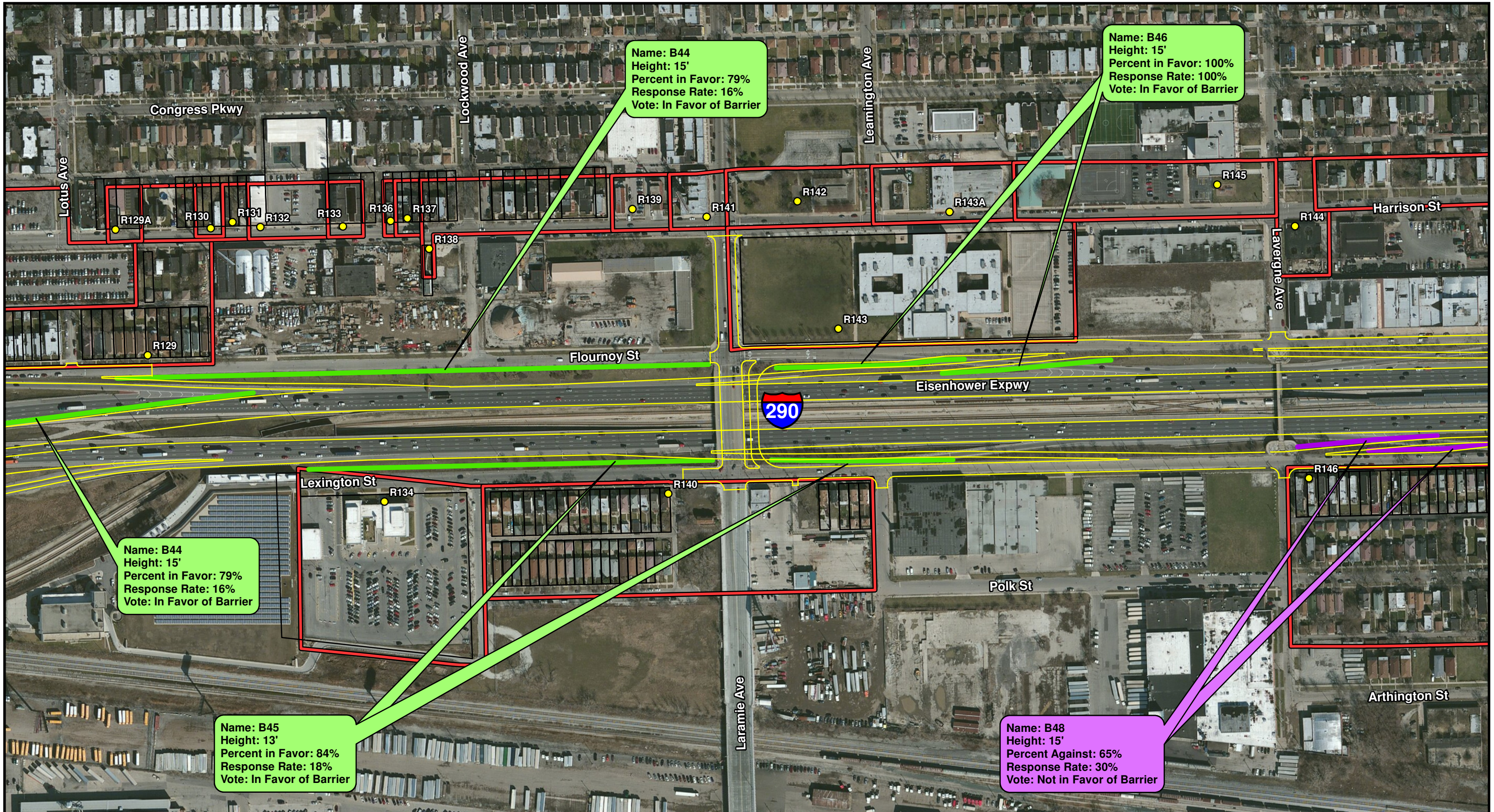
**Legend**

- Noise Receptor
- Common Noise Environment
- Municipal Boundary
- Noise Barrier Likely to be Implemented
- Noise Barrier Not Likely to be Implemented
- Proposed Edge of Pavement

\* Callout Colored to Match Trending Results of Vote

**Huff & Huff, Inc.**

Figure 3 - Noise Barriers Recommended for Construction  
 I-290 (IL56/Butterfield Rd to Racine Ave)  
 Cook County, Illinois  
 Sheet 11 of 18  
 NRDG: Noise Reduction Design Plan



0 250 500  
 Feet

Aerial Source: USDA-FSA-APFO NAIP MrSID Mosaic, 2012

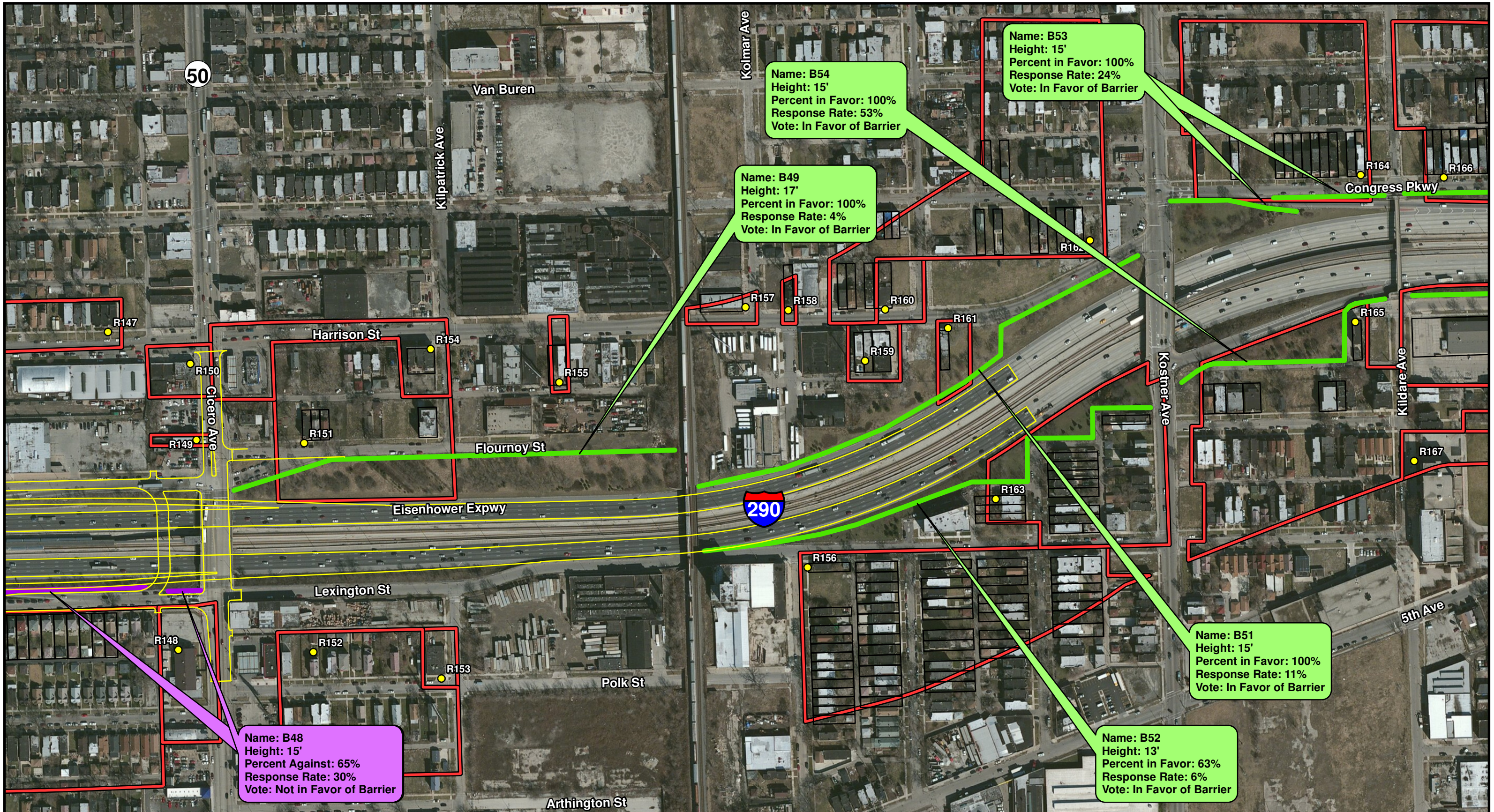
**Legend**

- Noise Receptor
- Common Noise Environment
- Municipal Boundary
- Noise Barrier Likely to be Implemented
- Noise Barrier Not Likely to be Implemented
- Proposed Edge of Pavement

\* Callout Colored to Match Trending Results of Vote

**Huff & Huff, Inc.**

Figure 3 - Noise Barriers Recommended for Construction  
 I-290 (IL56/Butterfield Rd to Racine Ave)  
 Cook County, Illinois  
 Sheet 12 of 18  
 NRDG: Noise Reduction Design Plan



Name: B54  
 Height: 15'  
 Percent in Favor: 100%  
 Response Rate: 53%  
 Vote: In Favor of Barrier

Name: B53  
 Height: 15'  
 Percent in Favor: 100%  
 Response Rate: 24%  
 Vote: In Favor of Barrier

Name: B49  
 Height: 17'  
 Percent in Favor: 100%  
 Response Rate: 4%  
 Vote: In Favor of Barrier

Name: B51  
 Height: 15'  
 Percent in Favor: 100%  
 Response Rate: 11%  
 Vote: In Favor of Barrier

Name: B52  
 Height: 13'  
 Percent in Favor: 63%  
 Response Rate: 6%  
 Vote: In Favor of Barrier

Name: B48  
 Height: 15'  
 Percent Against: 65%  
 Response Rate: 30%  
 Vote: Not in Favor of Barrier



Aerial Source: USDA-FSA-APFO NAIP MrSID Mosaic, 2012

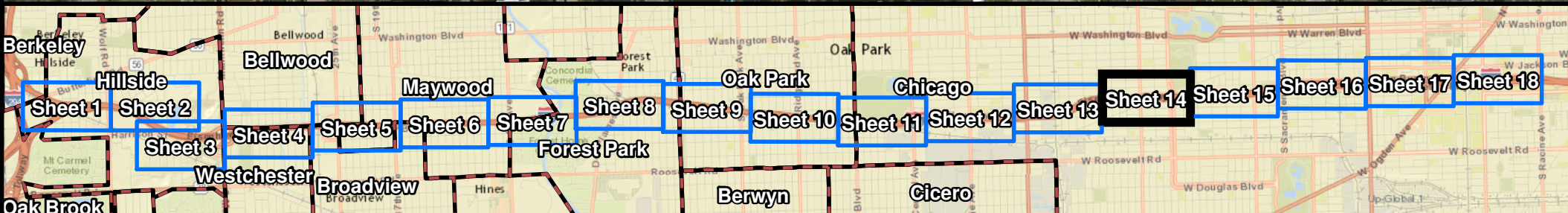
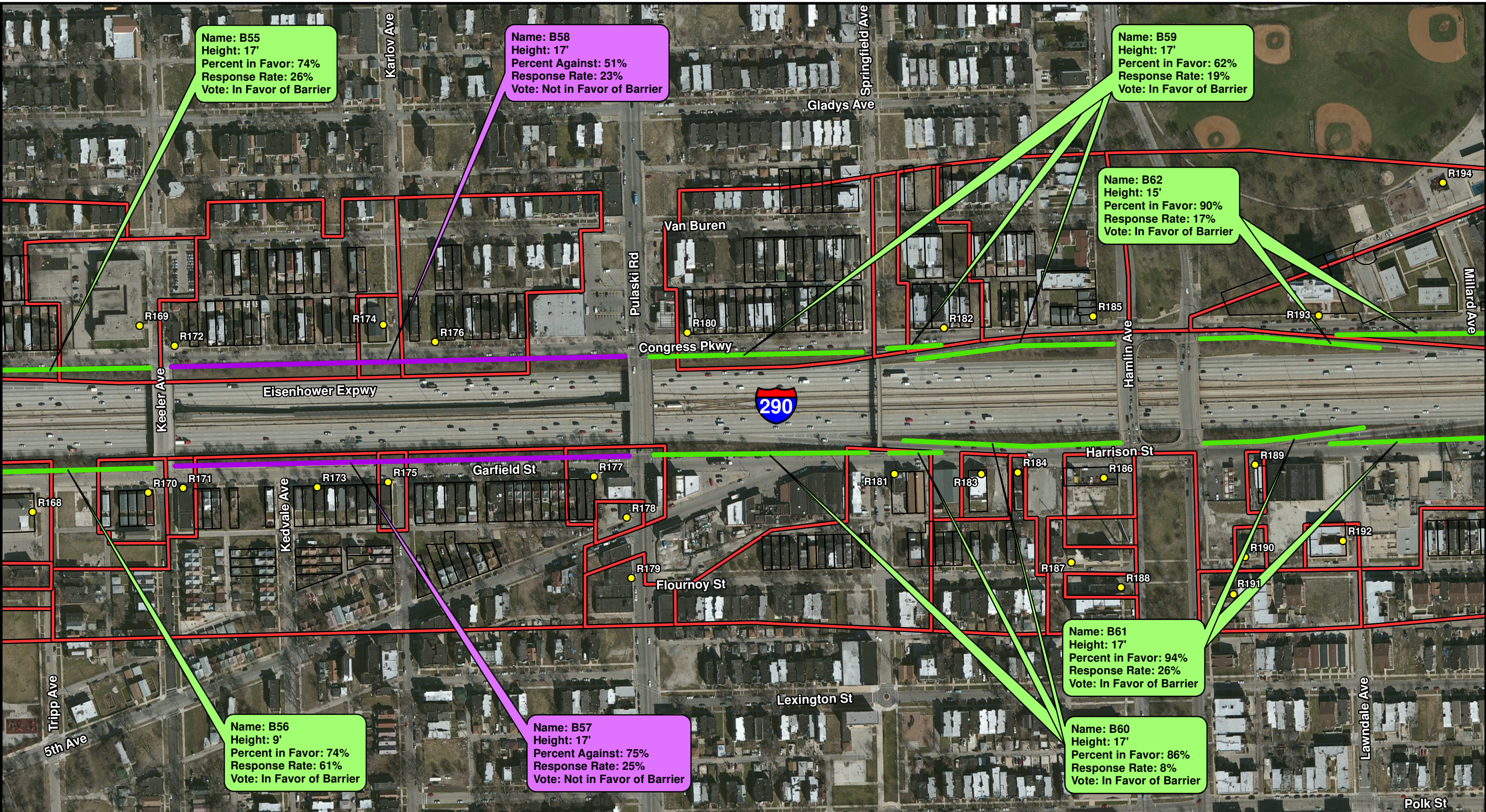
Legend

- Noise Receptor
- Common Noise Environment
- Municipal Boundary
- Noise Barrier Likely to be Implemented
- Noise Barrier Not Likely to be Implemented
- Proposed Edge of Pavement

\* Callout Colored to Match Trending Results of Vote

**Huff & Huff, Inc.**

Figure 3 - Noise Barriers Recommended for Construction  
 I-290 (IL56/Butterfield Rd to Racine Ave)  
 Cook County, Illinois  
 Sheet 13 of 18  
 NRDG: Noise Reduction Design Plan



Aerial Source: USDA-FSA-APFO NAIP MrSID Mosaic, 2012

Legend

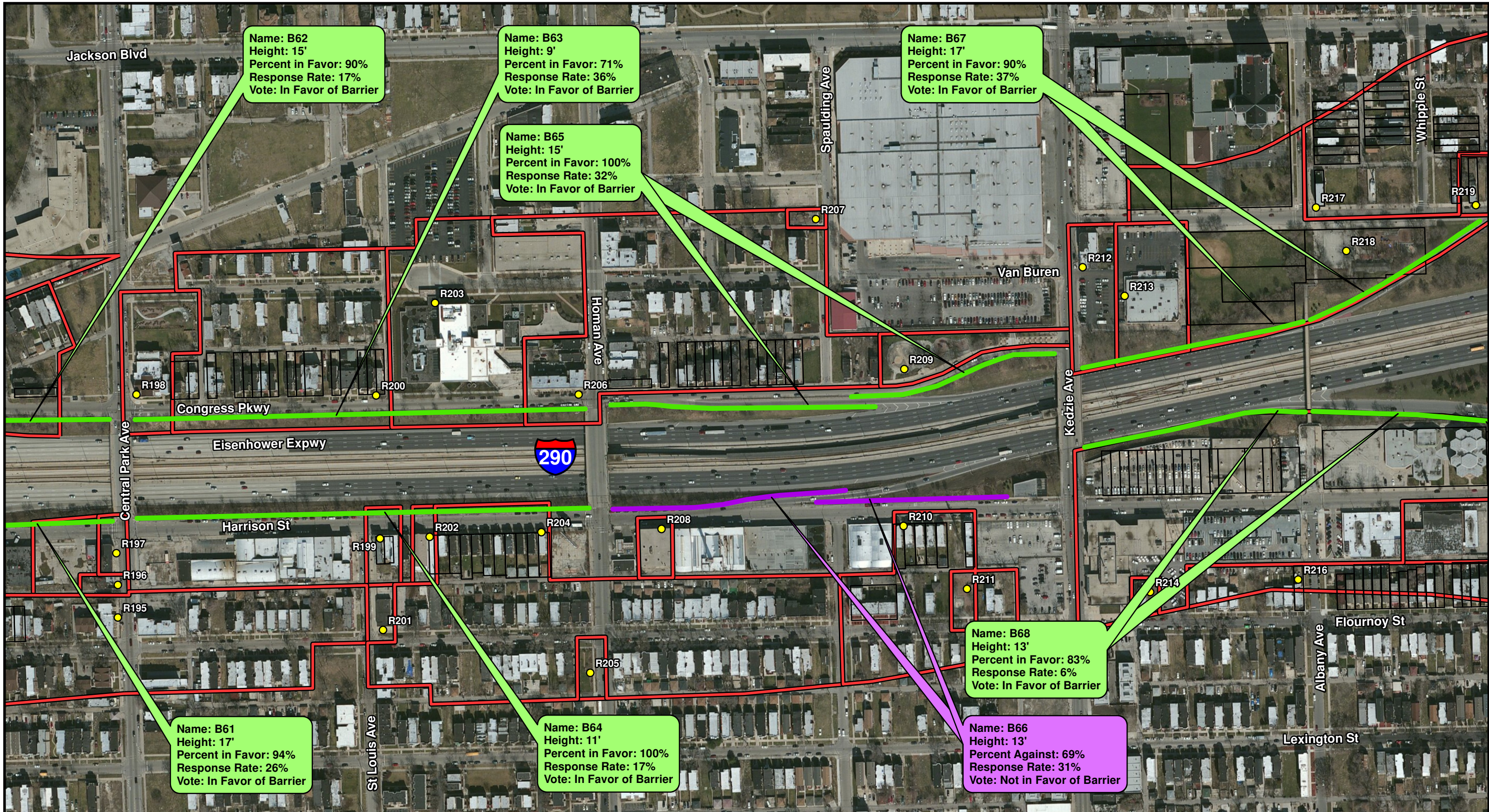
- Noise Receptor
- Common Noise Environment
- Municipal Boundary
- Noise Barrier Likely to be Implemented
- Noise Barrier Not Likely to be Implemented
- Proposed Edge of Pavement

0 250 500 Feet

\* Callout Colored to Match Trending Results of Vote

**Huff & Huff, Inc.**

Figure 3 - Noise Barriers Recommended for Construction I-290 (IL56/Butterfield Rd to Racine Ave) Cook County, Illinois Sheet 14 of 18 NRDG: Noise Reduction Design Plan



Name: B62  
 Height: 15'  
 Percent in Favor: 90%  
 Response Rate: 17%  
 Vote: In Favor of Barrier

Name: B63  
 Height: 9'  
 Percent in Favor: 71%  
 Response Rate: 36%  
 Vote: In Favor of Barrier

Name: B67  
 Height: 17'  
 Percent in Favor: 90%  
 Response Rate: 37%  
 Vote: In Favor of Barrier

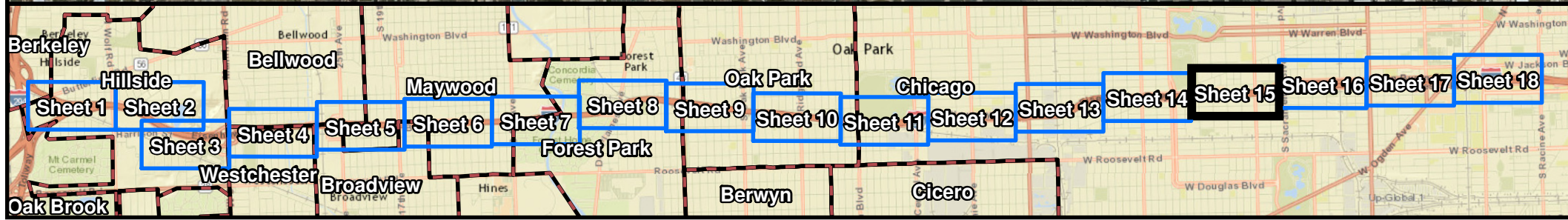
Name: B65  
 Height: 15'  
 Percent in Favor: 100%  
 Response Rate: 32%  
 Vote: In Favor of Barrier

Name: B68  
 Height: 13'  
 Percent in Favor: 83%  
 Response Rate: 6%  
 Vote: In Favor of Barrier

Name: B61  
 Height: 17'  
 Percent in Favor: 94%  
 Response Rate: 26%  
 Vote: In Favor of Barrier

Name: B64  
 Height: 11'  
 Percent in Favor: 100%  
 Response Rate: 17%  
 Vote: In Favor of Barrier

Name: B66  
 Height: 13'  
 Percent Against: 69%  
 Response Rate: 31%  
 Vote: Not in Favor of Barrier



Aerial Source: USDA-FSA-APFO NAIP MrSID Mosaic, 2012

Legend

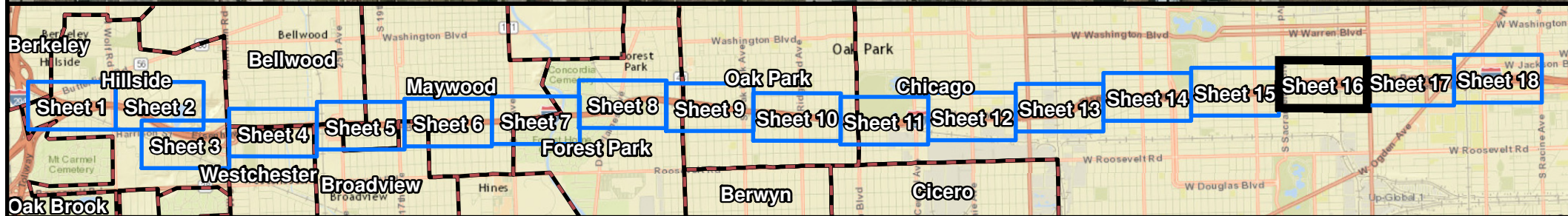
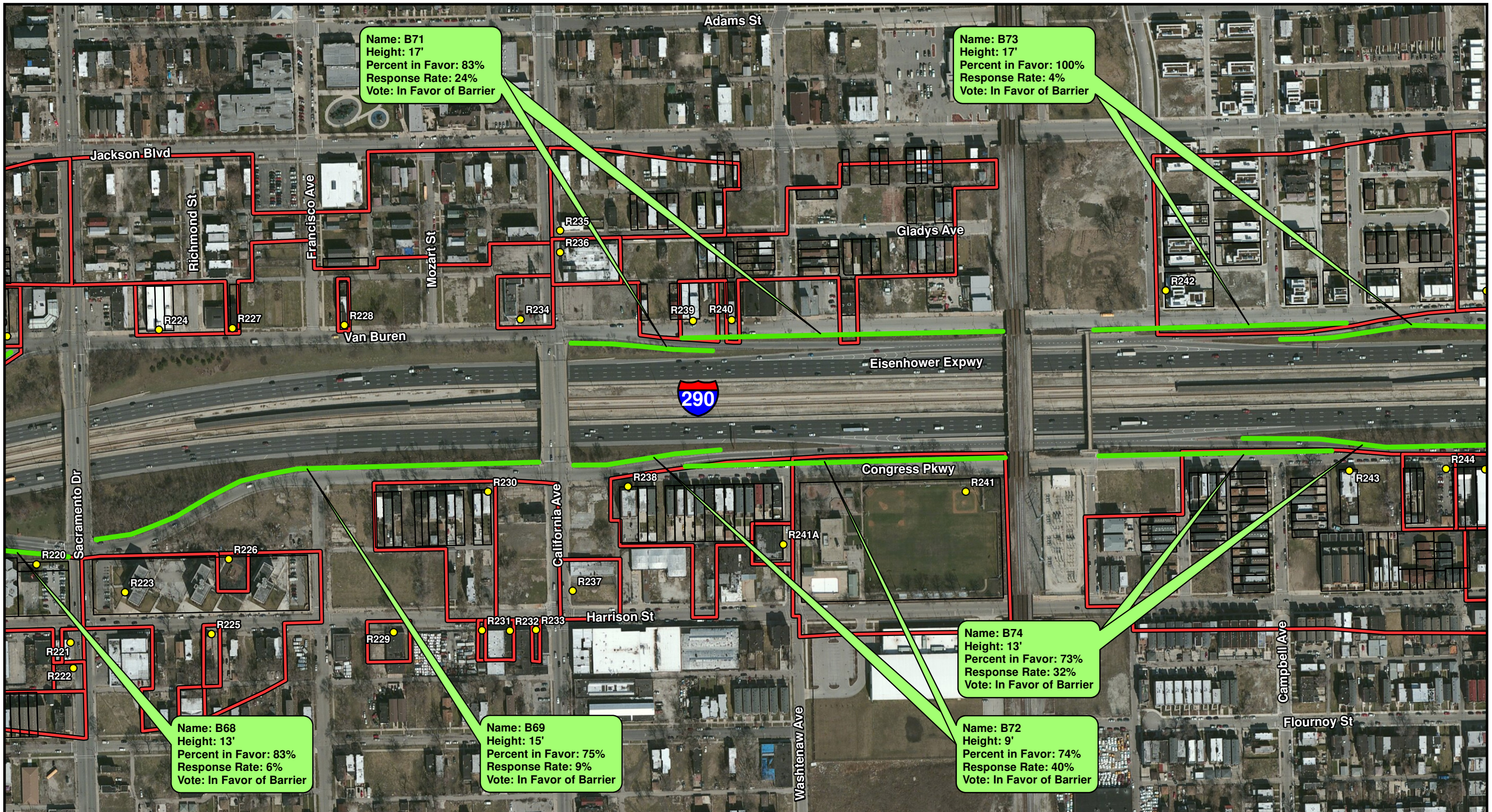
- Noise Receptor
- Common Noise Environment
- Municipal Boundary
- Noise Barrier Likely to be Implemented
- Noise Barrier Not Likely to be Implemented
- Proposed Edge of Pavement

\* Callout Colored to Match Trending Results of Vote

**Huff & Huff, Inc.**

Figure 3 - Noise Barriers Recommended for Construction  
 I-290 (IL56/Butterfield Rd to Racine Ave)  
 Cook County, Illinois  
 Sheet 15 of 18  
 NRDG: Noise Reduction Design Plan





Aerial Source: USDA-FSA-APFO NAIP MrSID Mosaic, 2012

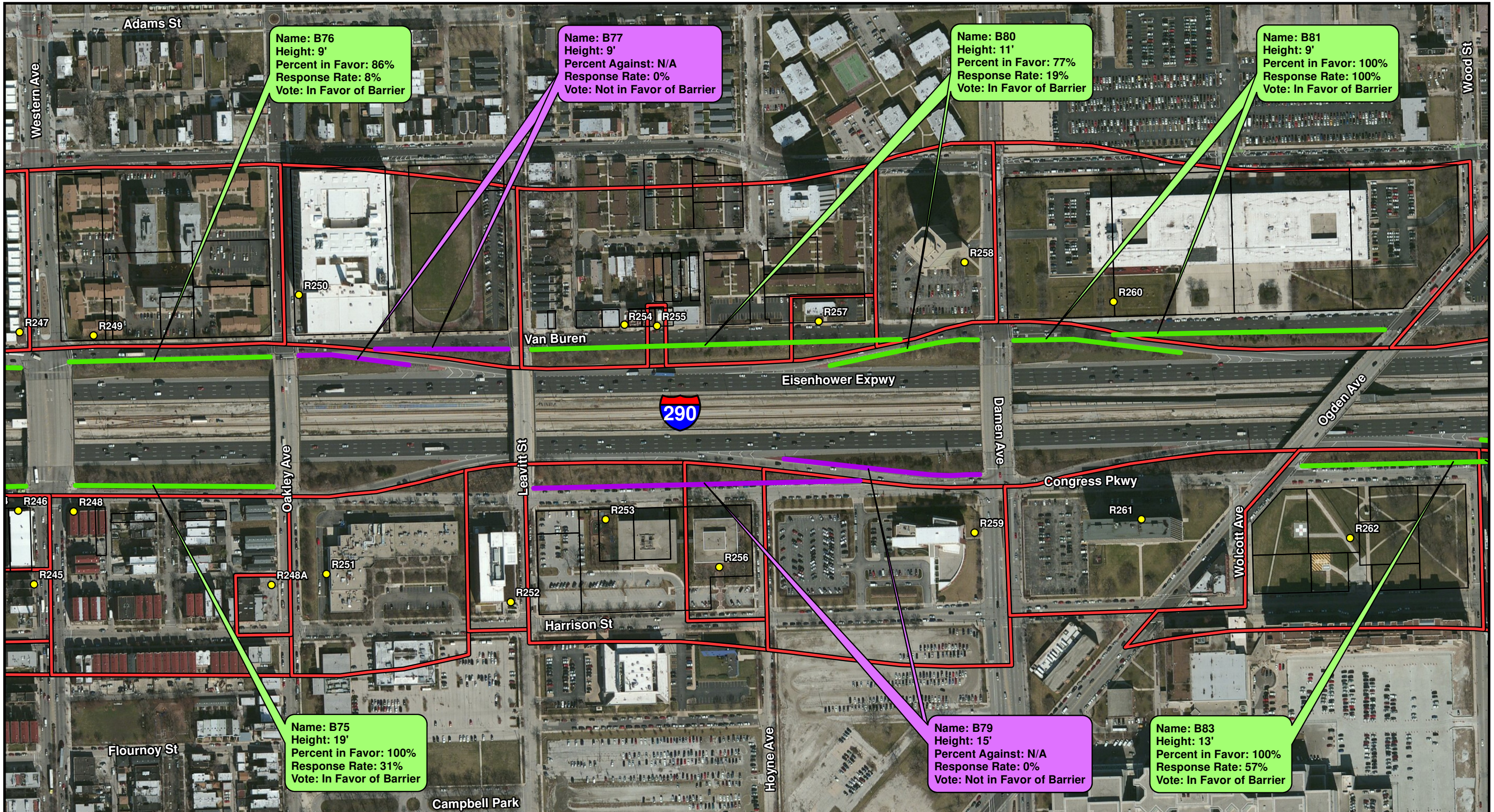
Legend

- Noise Receptor
- Common Noise Environment
- Municipal Boundary
- Noise Barrier Likely to be Implemented
- Noise Barrier Not Likely to be Implemented
- Proposed Edge of Pavement

\* Callout Colored to Match Trending Results of Vote

**Huff & Huff, Inc.**

Figure 3 - Noise Barriers Recommended for Construction  
 I-290 (IL56/Butterfield Rd to Racine Ave)  
 Cook County, Illinois  
 Sheet 16 of 18  
 NRDG: Noise Reduction Design Plan



Name: B76  
 Height: 9'  
 Percent in Favor: 86%  
 Response Rate: 8%  
 Vote: In Favor of Barrier

Name: B77  
 Height: 9'  
 Percent Against: N/A  
 Response Rate: 0%  
 Vote: Not in Favor of Barrier

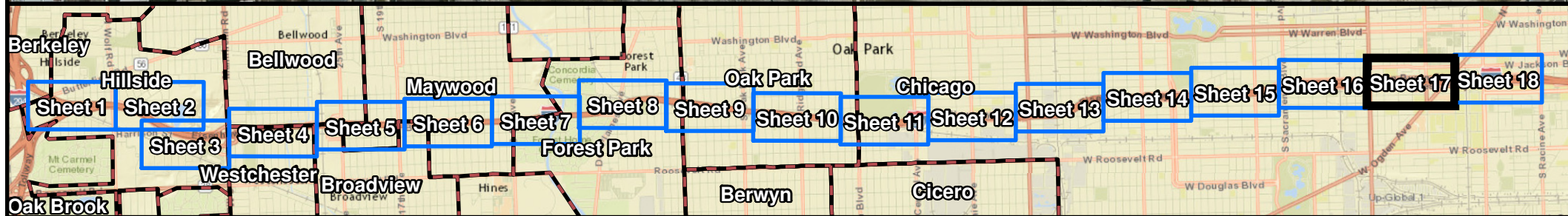
Name: B80  
 Height: 11'  
 Percent in Favor: 77%  
 Response Rate: 19%  
 Vote: In Favor of Barrier

Name: B81  
 Height: 9'  
 Percent in Favor: 100%  
 Response Rate: 100%  
 Vote: In Favor of Barrier

Name: B75  
 Height: 19'  
 Percent in Favor: 100%  
 Response Rate: 31%  
 Vote: In Favor of Barrier

Name: B79  
 Height: 15'  
 Percent Against: N/A  
 Response Rate: 0%  
 Vote: Not in Favor of Barrier

Name: B83  
 Height: 13'  
 Percent in Favor: 100%  
 Response Rate: 57%  
 Vote: In Favor of Barrier



0 250 500  
 Feet

Aerial Source: USDA-FSA-APFO NAIP MrSID Mosaic, 2012

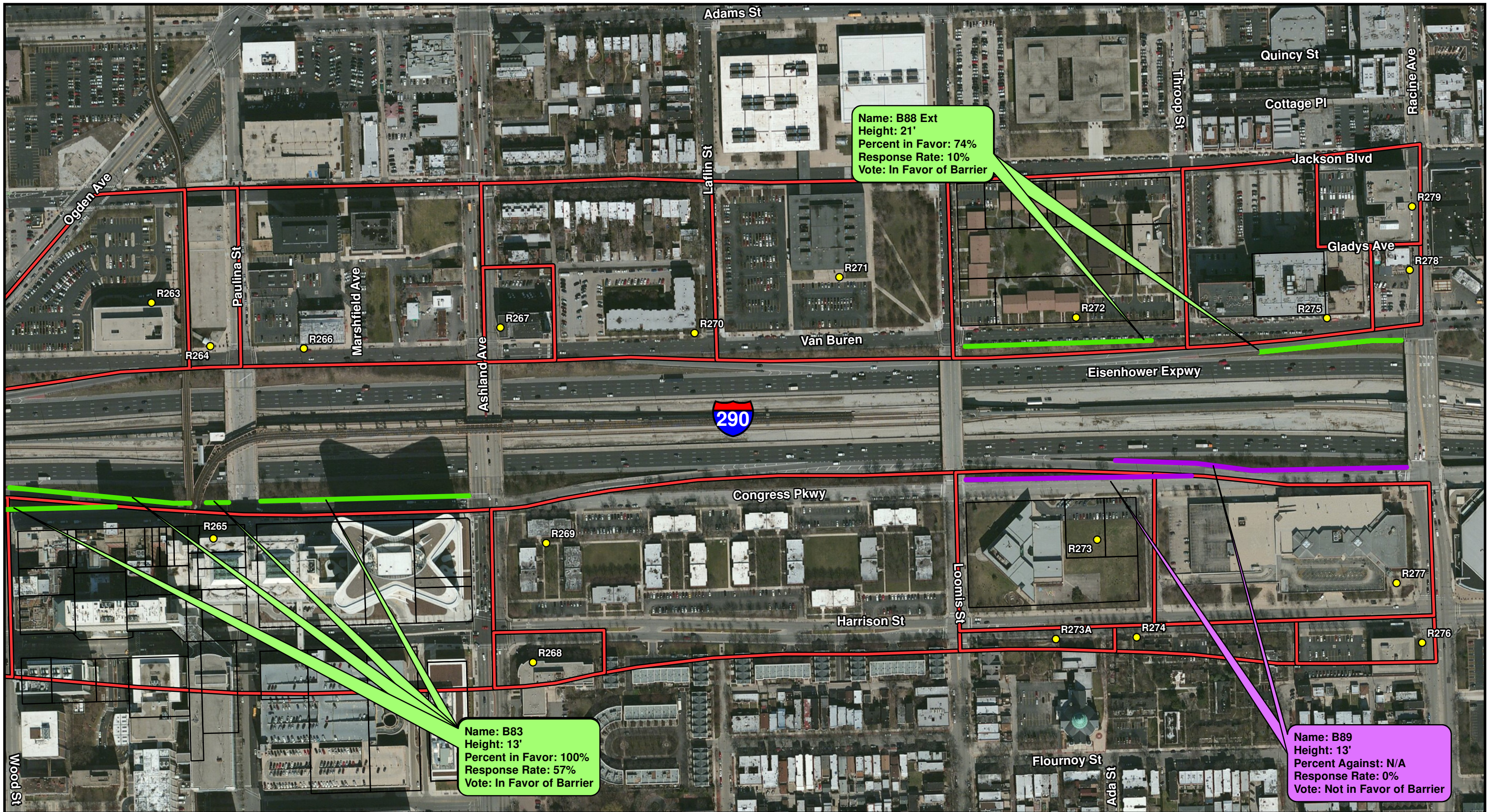
Legend

- Noise Receptor
- Common Noise Environment
- Municipal Boundary
- Noise Barrier Likely to be Implemented
- Noise Barrier Not Likely to be Implemented
- Proposed Edge of Pavement

\* Callout Colored to Match Trending Results of Vote

**Huff & Huff, Inc.**

Figure 3 - Noise Barriers Recommended for Construction  
 I-290 (IL56/Butterfield Rd to Racine Ave)  
 Cook County, Illinois  
 Sheet 17 of 18  
 NRDG: Noise Reduction Design Plan



Name: B88 Ext  
 Height: 21'  
 Percent in Favor: 74%  
 Response Rate: 10%  
 Vote: In Favor of Barrier

Name: B83  
 Height: 13'  
 Percent in Favor: 100%  
 Response Rate: 57%  
 Vote: In Favor of Barrier

Name: B89  
 Height: 13'  
 Percent Against: N/A  
 Response Rate: 0%  
 Vote: Not in Favor of Barrier



Aerial Source: USDA-FSA-APFO NAIP MrSID Mosaic, 2012

Legend

- Noise Receptor
- Common Noise Environment
- Municipal Boundary
- Noise Barrier Likely to be Implemented
- Noise Barrier Not Likely to be Implemented
- Proposed Edge of Pavement

\* Callout Colored to Match Trending Results of Vote

**Huff & Huff, Inc.**

Figure 3 - Noise Barriers Recommended for Construction I-290 (IL56/Butterfield Rd to Racine Ave) Cook County, Illinois Sheet 18 of 18 NRDG: Noise Reduction Design Plan

## Appendix B

[DATE]

Tonita LeShore  
Director  
Community Development and Human Resources  
Village of Bellwood  
3200 Washington Boulevard  
Bellwood, IL 60104

Re: Traffic Noise Information for Undeveloped Lands  
Eisenhower Expressway (I-290) Reconstruction

The Illinois Department of Transportation is currently conducting environmental (Phase I) preliminary engineering studies for proposed improvements to the Eisenhower Expressway (I-290) in Cook County, IL. The proposed improvements include reconstruction of the expressway from I-88 to Cicero Avenue/IL Route 50, as well as roadway restriping from Cicero Avenue/IL Route 50 to Racine Avenue.

As part of the Phase I Environmental Study for this proposed project, projected future traffic noise levels were evaluated for lands (either currently under your jurisdiction or land that may come under your jurisdiction) near the proposed roadway improvement. For your information, this study area includes land that may be planned for future development in a comprehensive land use plan.

This letter includes an exhibit showing the predicted design year (2040) build traffic noise levels for the undeveloped lands along the project corridor within your jurisdiction. This information is for your use in planning and permitting future development. We recommend that you carefully consider the future predicted noise levels to avoid potential issues of public concern over incompatible noise levels.

The figure shows currently vacant/future development areas in red, and also shows the distance from the center of the nearest outside I-290 mainline travel lane (based on the proposed improvement) to both the 66- and 71-dB(A) noise level contours.

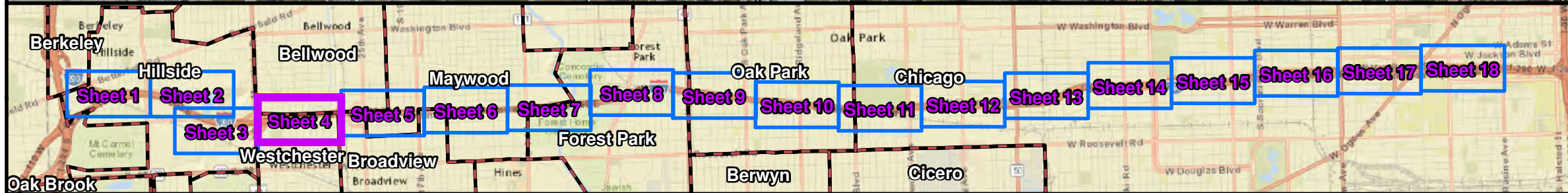
- A 66-dB(A) noise contour represents noise levels that would be a noise impact for residential areas, schools, places of worship, medical offices, recreational areas, and institutional uses.
- A 71-dB(A) noise contour represents noise levels that would be a noise impact for hotels, restaurants, and offices.

To help with your future planning and discernment regarding permitting decisions, we encourage you to obtain the Federal Highway Administration (FHWA) publication titled *Entering the Quiet Zone: Noise Compatible Land Use Planning*. This publication can be obtained from the FHWA website:

[www.fhwa.dot.gov/environment/noise/noise\\_compatible\\_planning/federal\\_approach/land\\_use/quietzone.pdf](http://www.fhwa.dot.gov/environment/noise/noise_compatible_planning/federal_approach/land_use/quietzone.pdf)

For additional information regarding traffic noise, regulations and policy, noise analyses or noise abatement, we encourage you to visit the Department's web site at: <http://www.dot.il.gov/>. Click on the "Environment" link and then the "Traffic Noise" link to access this information.

Sincerely,



0 250 500  
Feet

Aerial Source: USDA-FSA-APFO NAIP MrSID Mosaic, 2012

Legend	
Primary Land Use Activity Category	Secondary Land Use Activity Category
B	C
C	E
E	F
F	G
G	Municipal Boundary

**Huff & Huff, Inc.**

Undeveloped Lands Analysis  
I-290 (IL56/Butterfield Rd to Racine Ave)  
Cook County, Illinois  
Sheet 4 of 18

[DATE]

Andrew Mooney  
Commissioner  
Planning and Development  
City of Chicago  
121 N. LaSalle Street  
Chicago, IL 60602

Re: Traffic Noise Information for Undeveloped Lands  
Eisenhower Expressway (I-290) Reconstruction

The Illinois Department of Transportation is currently conducting environmental (Phase I) preliminary engineering studies for proposed improvements to the Eisenhower Expressway (I-290) in Cook County, IL. The proposed improvements include reconstruction of the expressway from I-88 to Cicero Avenue/IL Route 50, as well as roadway restriping from Cicero Avenue/IL Route 50 to Racine Avenue.

As part of the Phase I Environmental Study for this proposed project, projected future traffic noise levels were evaluated for lands (either currently under your jurisdiction or land that may come under your jurisdiction) near the proposed roadway improvement. For your information, this study area includes land that may be planned for future development in a comprehensive land use plan.

This letter includes an exhibit showing the predicted design year (2040) build traffic noise levels for the undeveloped lands along the project corridor within your jurisdiction. This information is for your use in planning and permitting future development. We recommend that you carefully consider the future predicted noise levels to avoid potential issues of public concern over incompatible noise levels.

The figure shows currently vacant/future development areas in red, and also shows the distance from the center of the nearest outside I-290 mainline travel lane (based on the proposed improvement) to both the 66- and 71-dB(A) noise level contours.

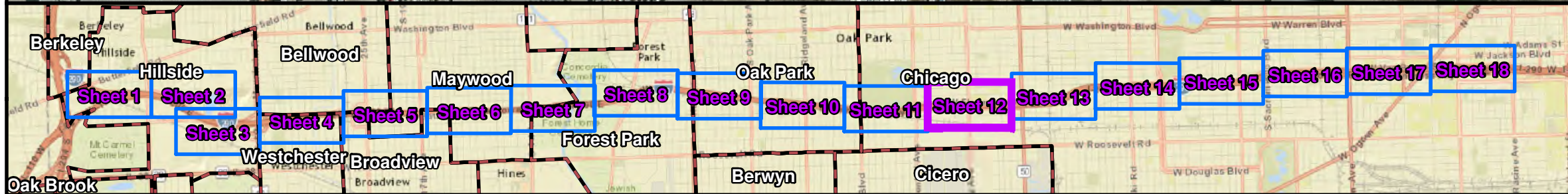
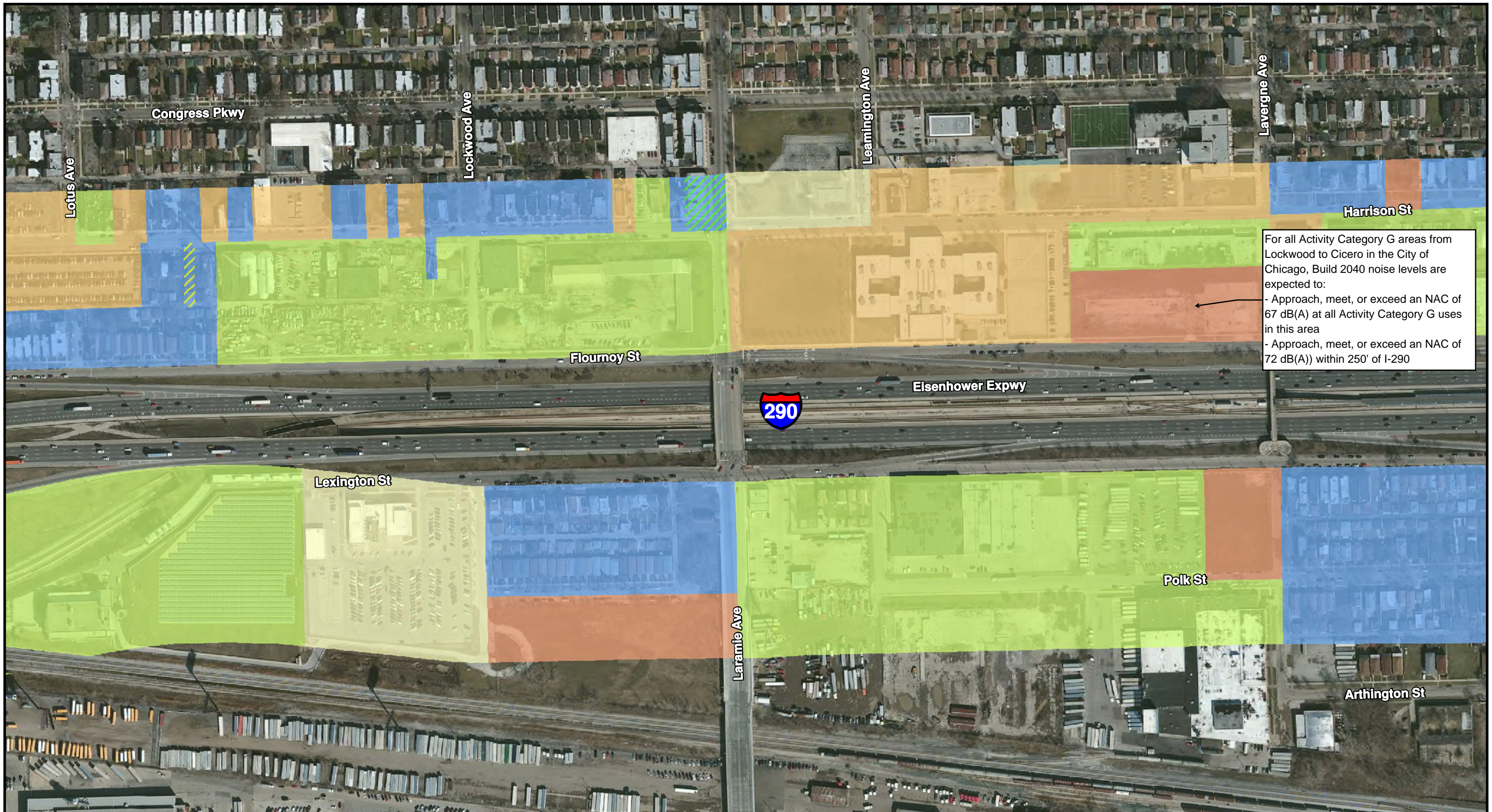
- A 66-dB(A) noise contour represents noise levels that would be a noise impact for residential areas, schools, places of worship, medical offices, recreational areas, and institutional uses.
- A 71-dB(A) noise contour represents noise levels that would be a noise impact for hotels, restaurants, and offices.

To help with your future planning and discernment regarding permitting decisions, we encourage you to obtain the Federal Highway Administration (FHWA) publication titled *Entering the Quiet Zone: Noise Compatible Land Use Planning*. This publication can be obtained from the FHWA website:

[www.fhwa.dot.gov/environment/noise/noise\\_compatible\\_planning/federal\\_approach/land\\_use/quietzone.pdf](http://www.fhwa.dot.gov/environment/noise/noise_compatible_planning/federal_approach/land_use/quietzone.pdf)

For additional information regarding traffic noise, regulations and policy, noise analyses or noise abatement, we encourage you to visit the Department's web site at: <http://www.dot.il.gov/>. Click on the "Environment" link and then the "Traffic Noise" link to access this information.

Sincerely,



0 250 500  
Feet

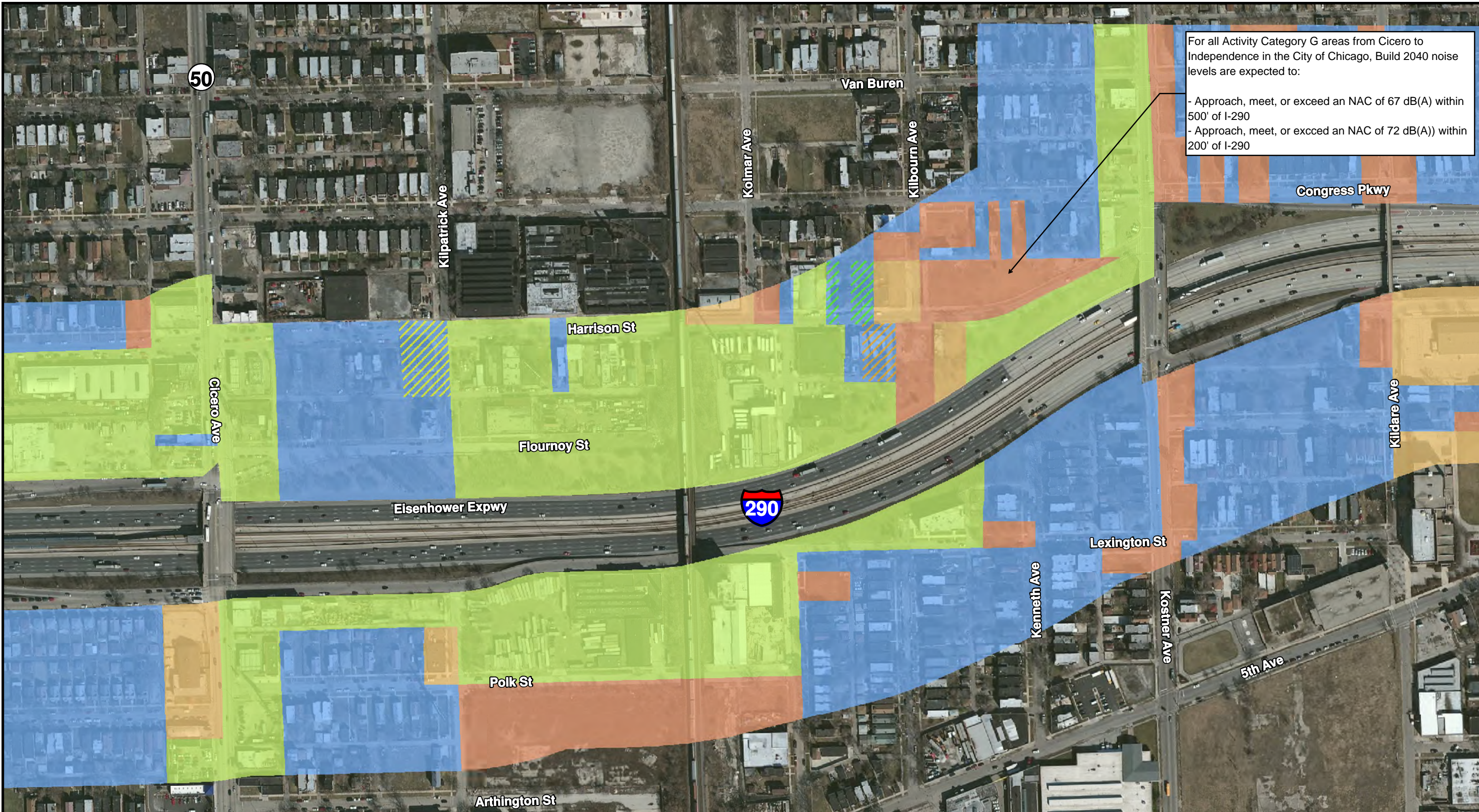
Aerial Source: USDA-FSA-APFO NAIP MrSID Mosaic, 2012

Legend	
Primary Land Use	Secondary Land Use
Activity Category	Activity Category
B	C
C	E
E	F
F	G
G	Municipal Boundary

**Huff & Huff, Inc.**

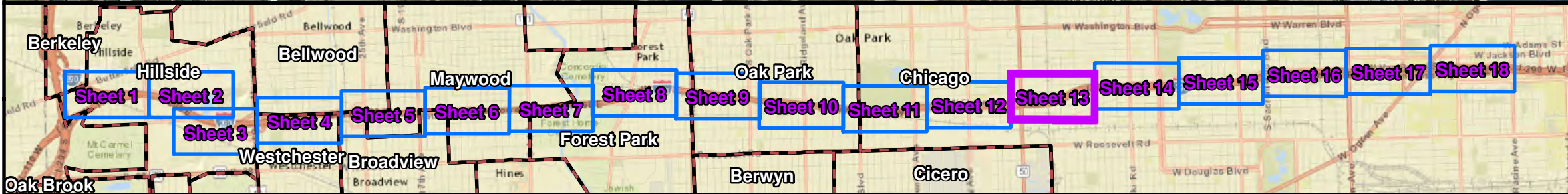
Undeveloped Lands Analysis  
I-290 (IL56/Butterfield Rd to Racine Ave)  
Cook County, Illinois  
Sheet 12 of 18





For all Activity Category G areas from Cicero to Independence in the City of Chicago, Build 2040 noise levels are expected to:

- Approach, meet, or exceed an NAC of 67 dB(A) within 500' of I-290
- Approach, meet, or exceed an NAC of 72 dB(A) within 200' of I-290



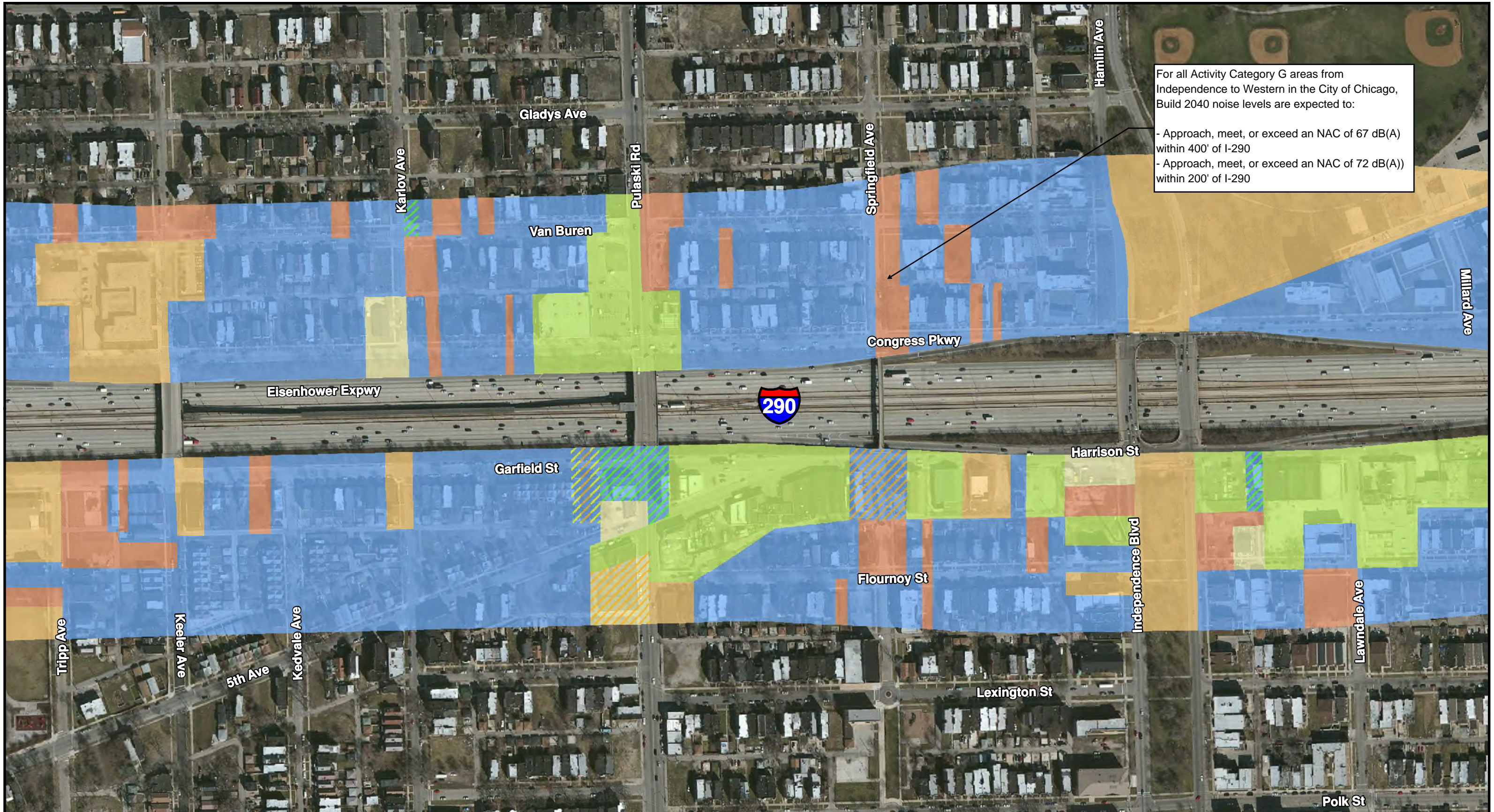
0 250 500  
Feet

Aerial Source: USDA-FSA-APFO NAIP MrSID Mosaic, 2012

Legend	
Primary Land Use	Secondary Land Use
<span style="color: blue;">■</span> B	<span style="color: orange;">■</span> C
<span style="color: yellow;">■</span> E	<span style="color: green;">■</span> F
<span style="color: red;">■</span> G	<span style="color: red;">■</span> Municipal Boundary

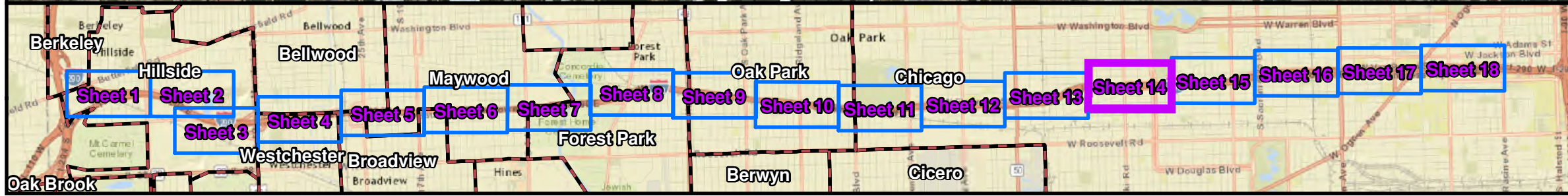
**Huff & Huff, Inc.**

Undeveloped Lands Analysis  
I-290 (IL56/Butterfield Rd to Racine Ave)  
Cook County, Illinois  
Sheet 13 of 18



For all Activity Category G areas from Independence to Western in the City of Chicago, Build 2040 noise levels are expected to:

- Approach, meet, or exceed an NAC of 67 dB(A) within 400' of I-290
- Approach, meet, or exceed an NAC of 72 dB(A) within 200' of I-290



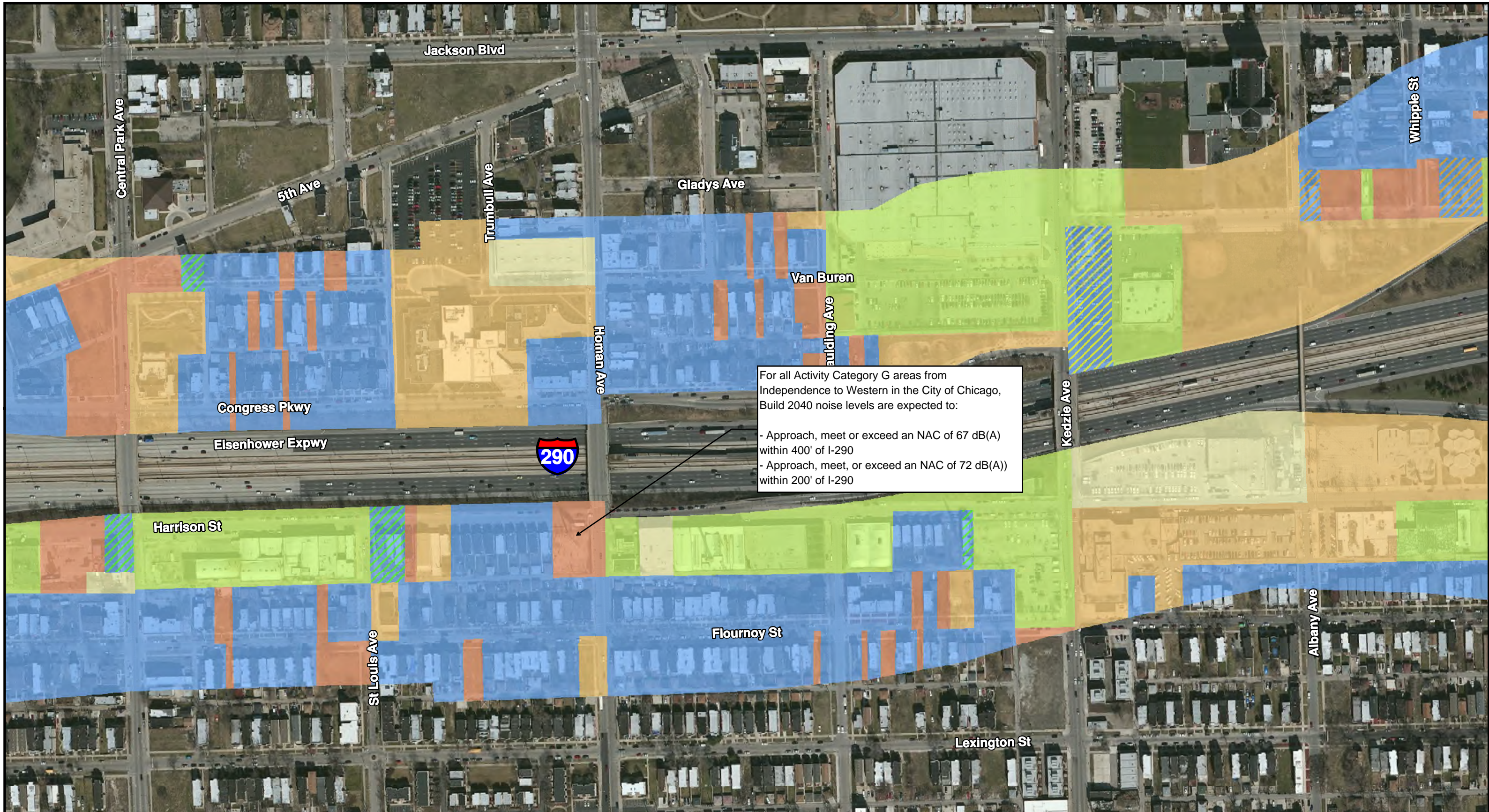
Aerial Source: USDA-FSA-APFO NAIP MrSID Mosaic, 2012

Legend	
Primary Land Use	Secondary Land Use
B	C
C	E
E	F
F	G
G	Municipal Boundary

Activity Category

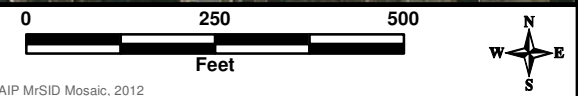
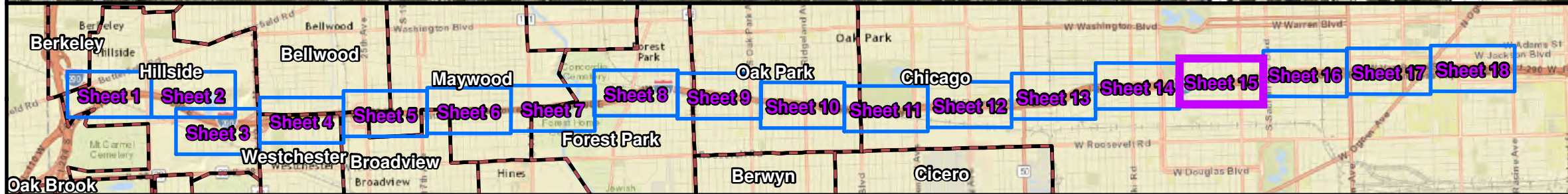
**Huff & Huff, Inc.**

Undeveloped Lands Analysis  
I-290 (IL56/Butterfield Rd to Racine Ave)  
Cook County, Illinois  
Sheet 14 of 18



For all Activity Category G areas from Independence to Western in the City of Chicago, Build 2040 noise levels are expected to:

- Approach, meet or exceed an NAC of 67 dB(A) within 400' of I-290
- Approach, meet, or exceed an NAC of 72 dB(A) within 200' of I-290

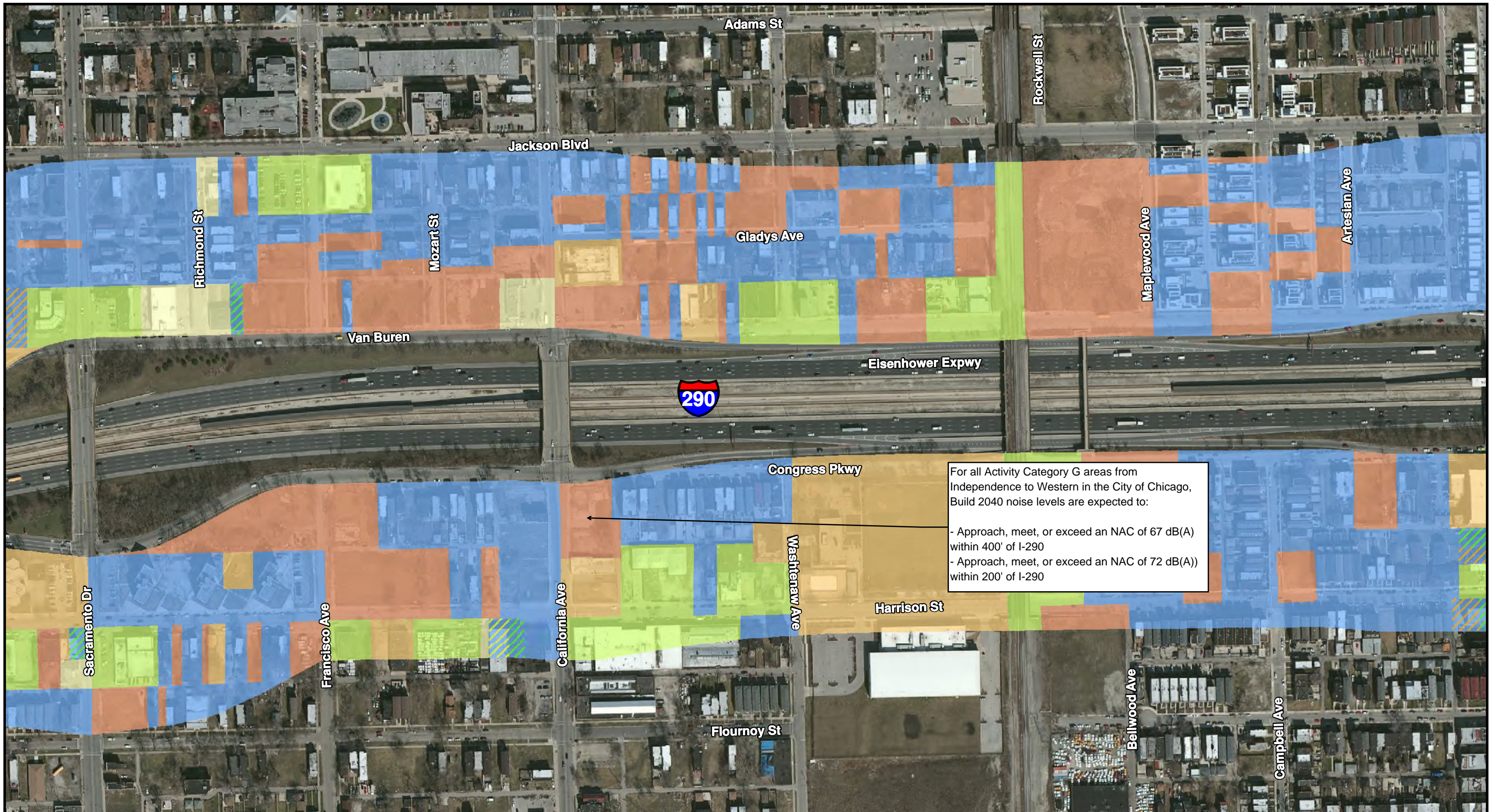


Aerial Source: USDA-FSA-APFO NAIP MRSID Mosaic, 2012

Legend	
Primary Land Use	Secondary Land Use
Activity Category	Activity Category
B	C
C	E
E	F
F	G
G	Municipal Boundary

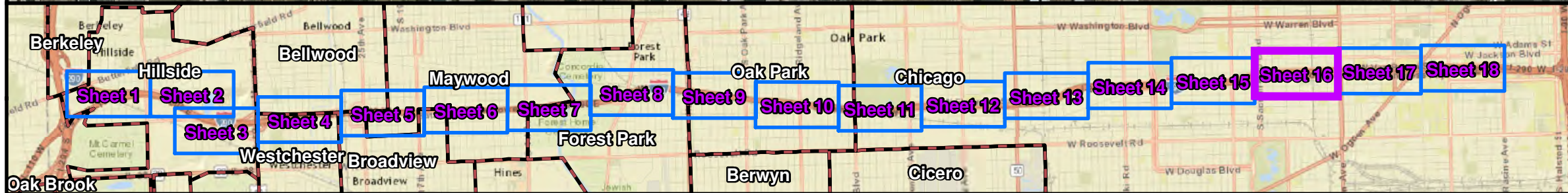
**Huff & Huff, Inc.**

Undeveloped Lands Analysis  
 I-290 (IL56/Butterfield Rd to Racine Ave)  
 Cook County, Illinois  
 Sheet 15 of 18



For all Activity Category G areas from Independence to Western in the City of Chicago, Build 2040 noise levels are expected to:

- Approach, meet, or exceed an NAC of 67 dB(A) within 400' of I-290
- Approach, meet, or exceed an NAC of 72 dB(A) within 200' of I-290



0 250 500  
Feet

Aerial Source: USDA-FSA-APFO NAIP MrSID Mosaic, 2012

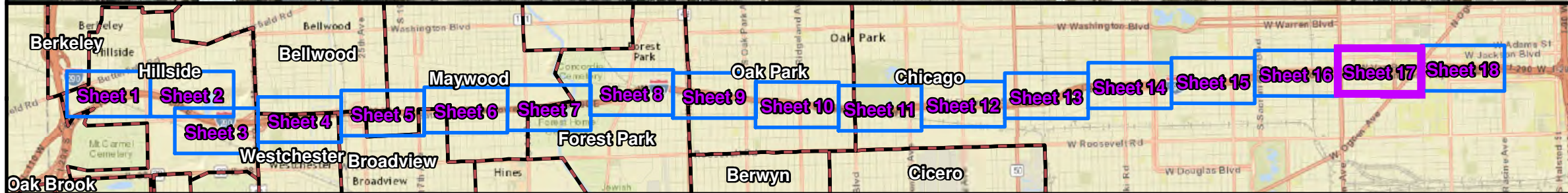
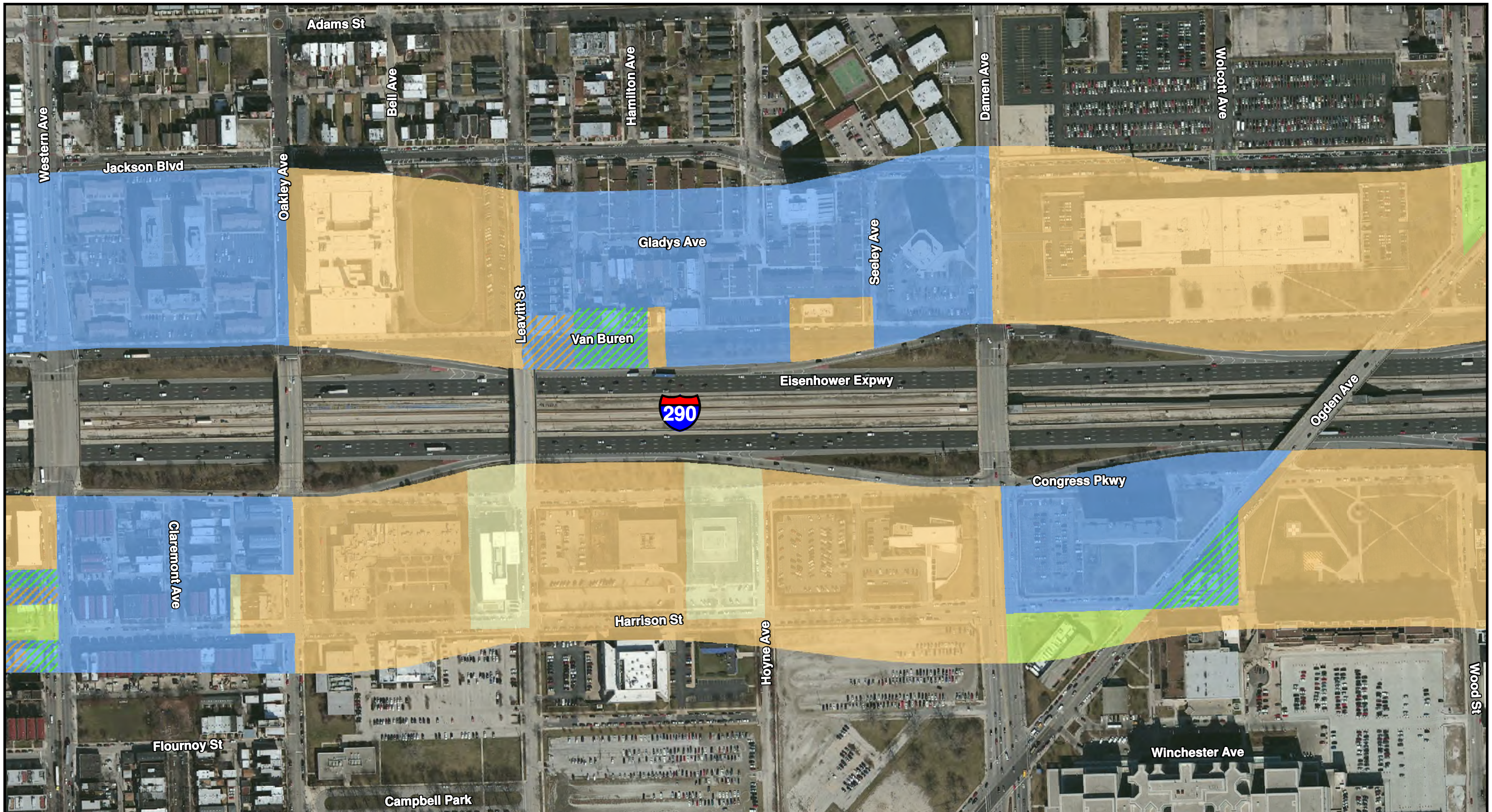
Primary Land Use	Secondary Land Use
B	C
C	E
E	F
F	G
G	

Activity Category Activity Category

Municipal Boundary

**Huff & Huff, Inc.**

Undeveloped Lands Analysis  
I-290 (IL56/Butterfield Rd to Racine Ave)  
Cook County, Illinois  
Sheet 16 of 18



0 250 500  
Feet

Aerial Source: USDA-FSA-APFO NAIP MRSID Mosaic, 2012

Legend	
Primary Land Use	Secondary Land Use
Activity Category	Activity Category
B	C
C	E
E	F
F	G
G	Municipal Boundary

**Huff & Huff, Inc.**

Undeveloped Lands Analysis  
I-290 (IL56/Butterfield Rd to Racine Ave)  
Cook County, Illinois  
Sheet 17 of 18