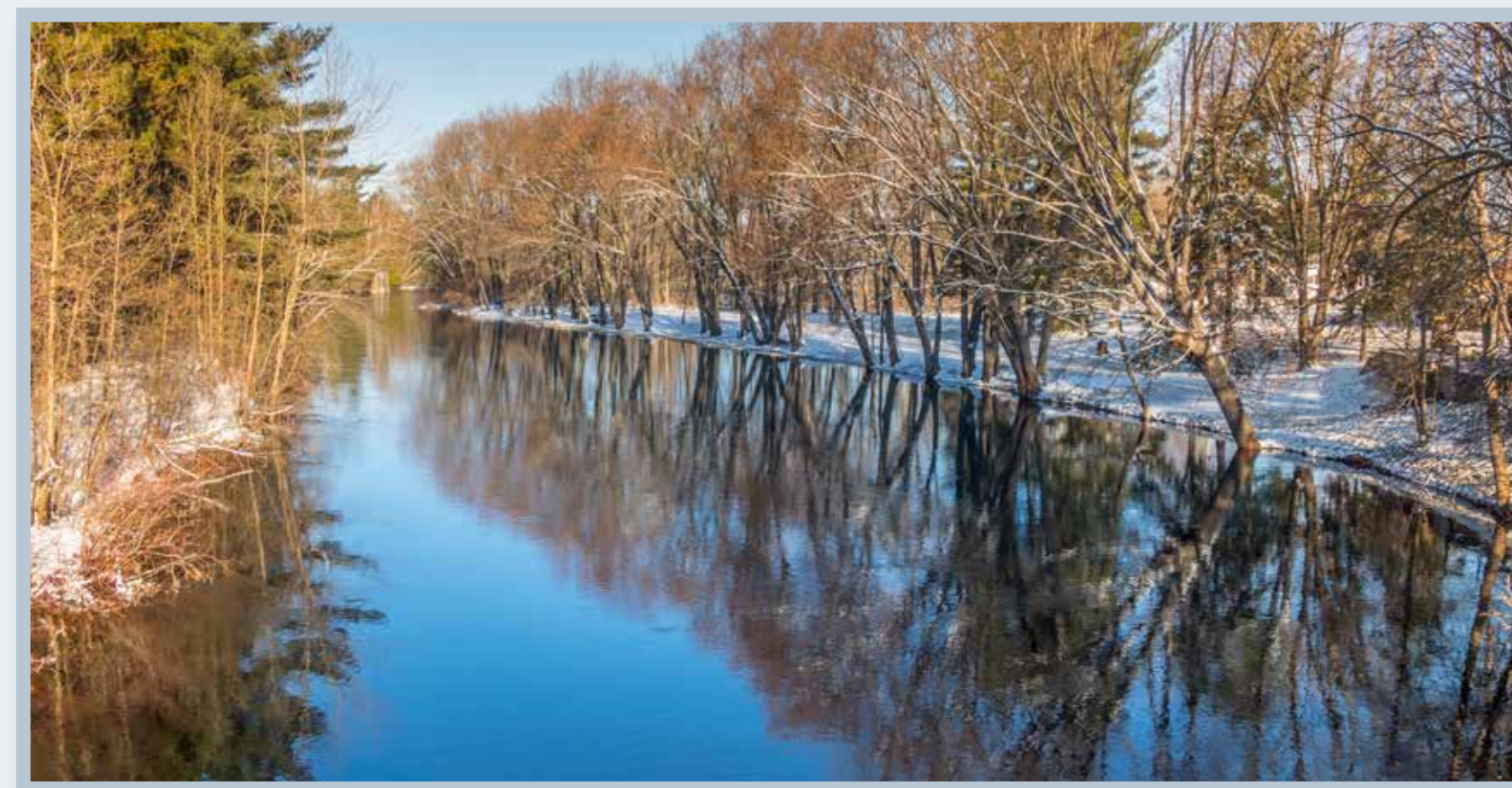


What is an Environmental Impact Statement (EIS)?



- > A summary of transportation needs, alternatives considered and stakeholder coordination.
- > It describes the process for developing a transportation project.
- > The most **rigorous level of analysis** for a transportation project.
- > Includes consideration of reasonable alternatives.
- > Analyzes **potential impacts** resulting from alternatives.
- > Demonstrates **compliance with environmental laws** and executive orders.
- > IDOT and Federal Highway Administration (FHWA) are joint lead agencies for preparing the EIS.

DRAFT EIS RELEASED
December 30, 2016



45 DAY COMMENT PERIOD ENDS
February 13, 2017



**PUBLISH FINAL EIS/
RECORD OF DECISION**
Summer 2017



Environmental Effects

Preferred Alternative

I-290 is an urban corridor with the existing environment mature and established with limited space for new development

Environmental Justice

- No disproportionate impacts to low income or minority populations
- No residential or business displacements
- No impact

Historic Properties

- No adverse effects anticipated, coordination ongoing
- Final determination in Final EIS

Noise

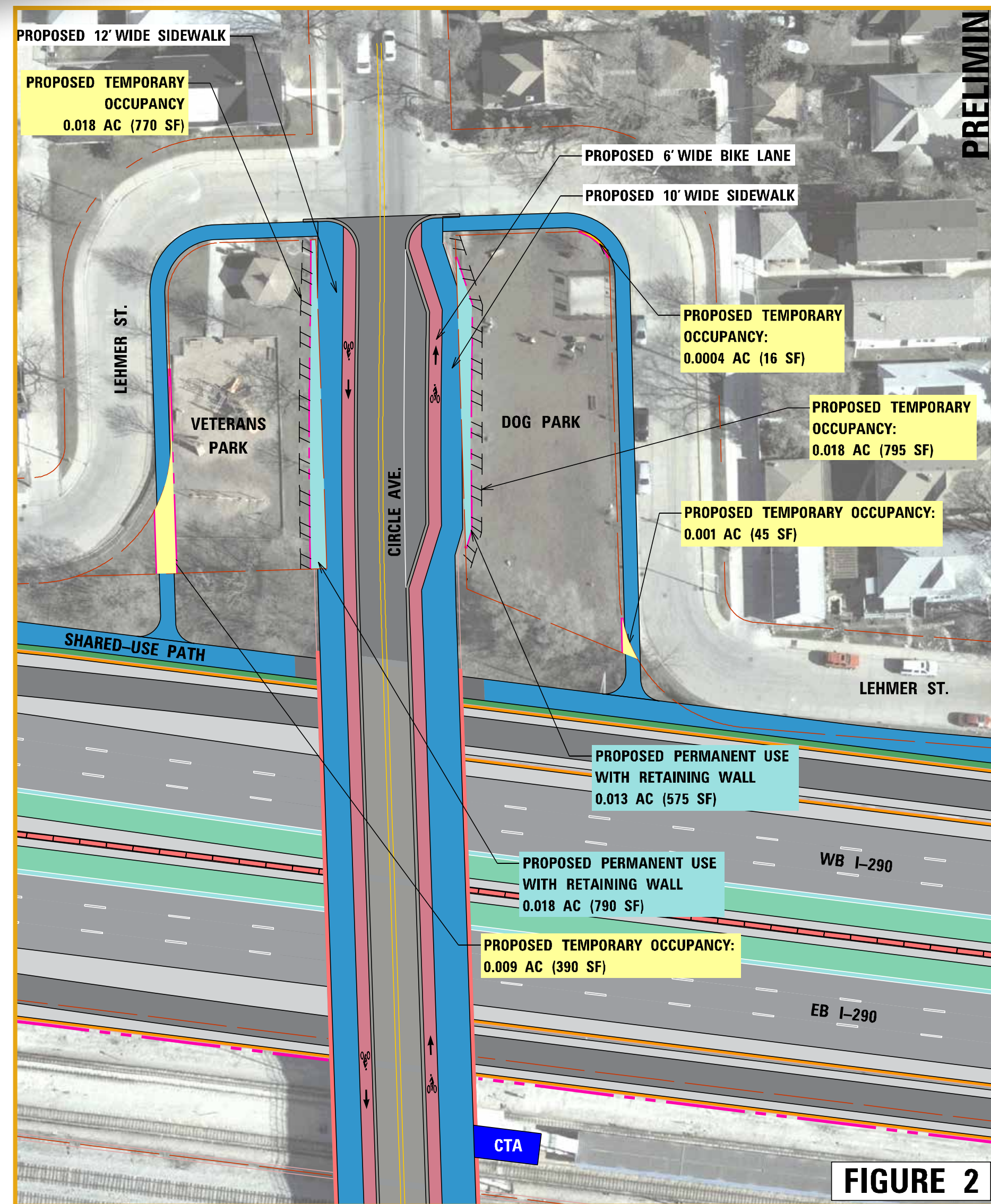
- Existing noise levels are sufficiently high to consider noise walls
- Preferred alternative generally **DOES NOT cause noticeable change in noise levels**
- Community **Noise forums were held** Fall 2015 and Summer 2016
- 46 of 63 walls studied are favored by voters
- Noise wall decisions will be revisited with communities during final design

Air

- Air quality **slightly improved** due to reduced congestion
- **Over 700 fewer** tons of CO₂

What are the Environmental Effects?

Preferred Alternative



Special Lands

- ✓ Two pocket parks affected in Forest Park along Circle Avenue
- ✓ Veterans Park (0.018 ac.) and Dog Park (0.013 ac.)
- ✓ Proposed improvements include bike and pedestrian improvements on Circle Avenue, Transit kiss-n-ride pull out and temporary occupancy also required for shared use path connections

Park District of Forest Park affected

- ✓ Park District recently purchased Roos Property and will be developed prior to I-290 construction
- ✓ 10-ft. Temporary Use construction easement will be required for Circle Avenue retaining wall

